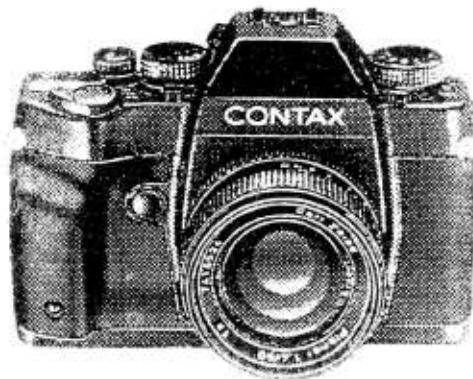
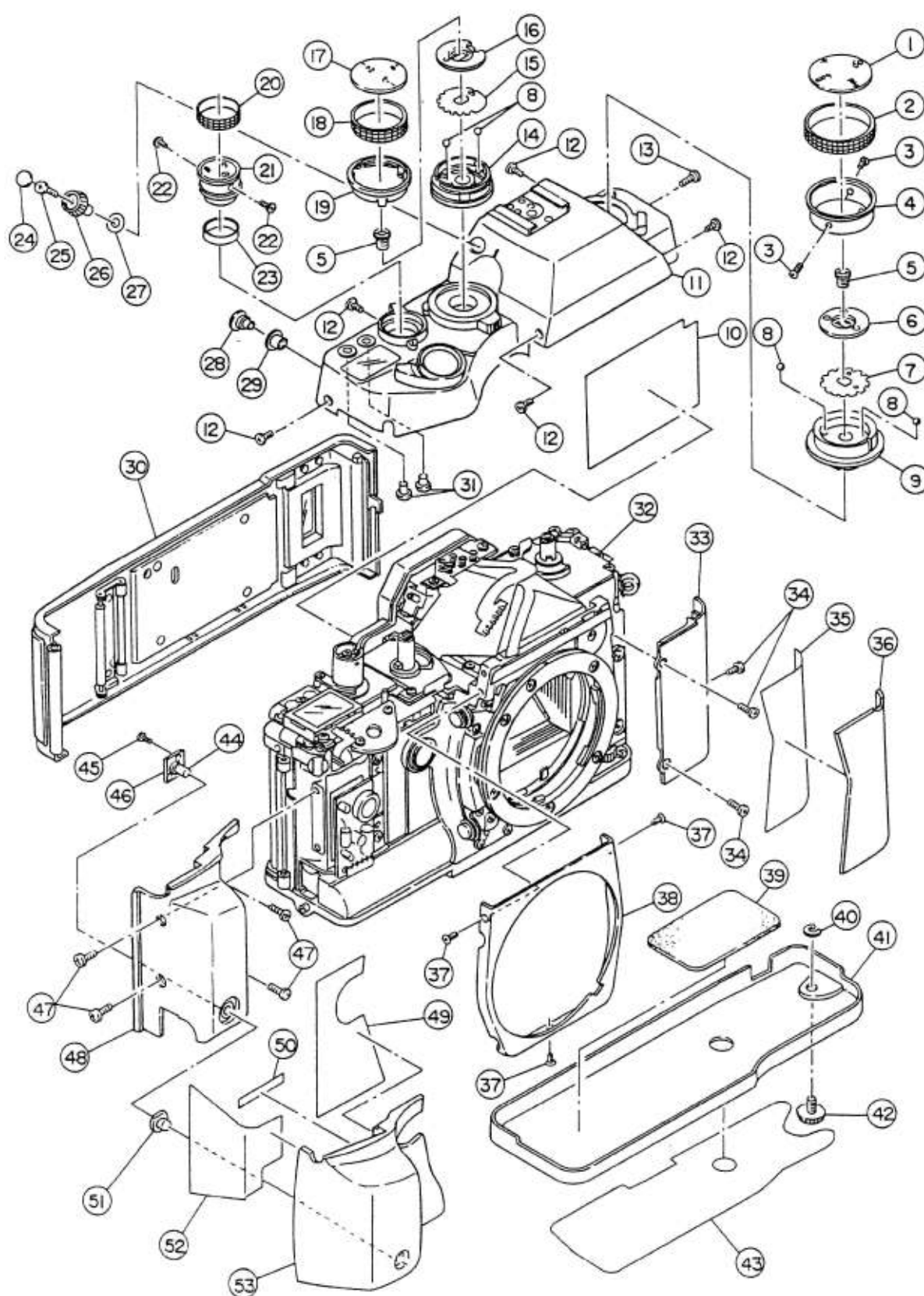




CONTAX **RX**

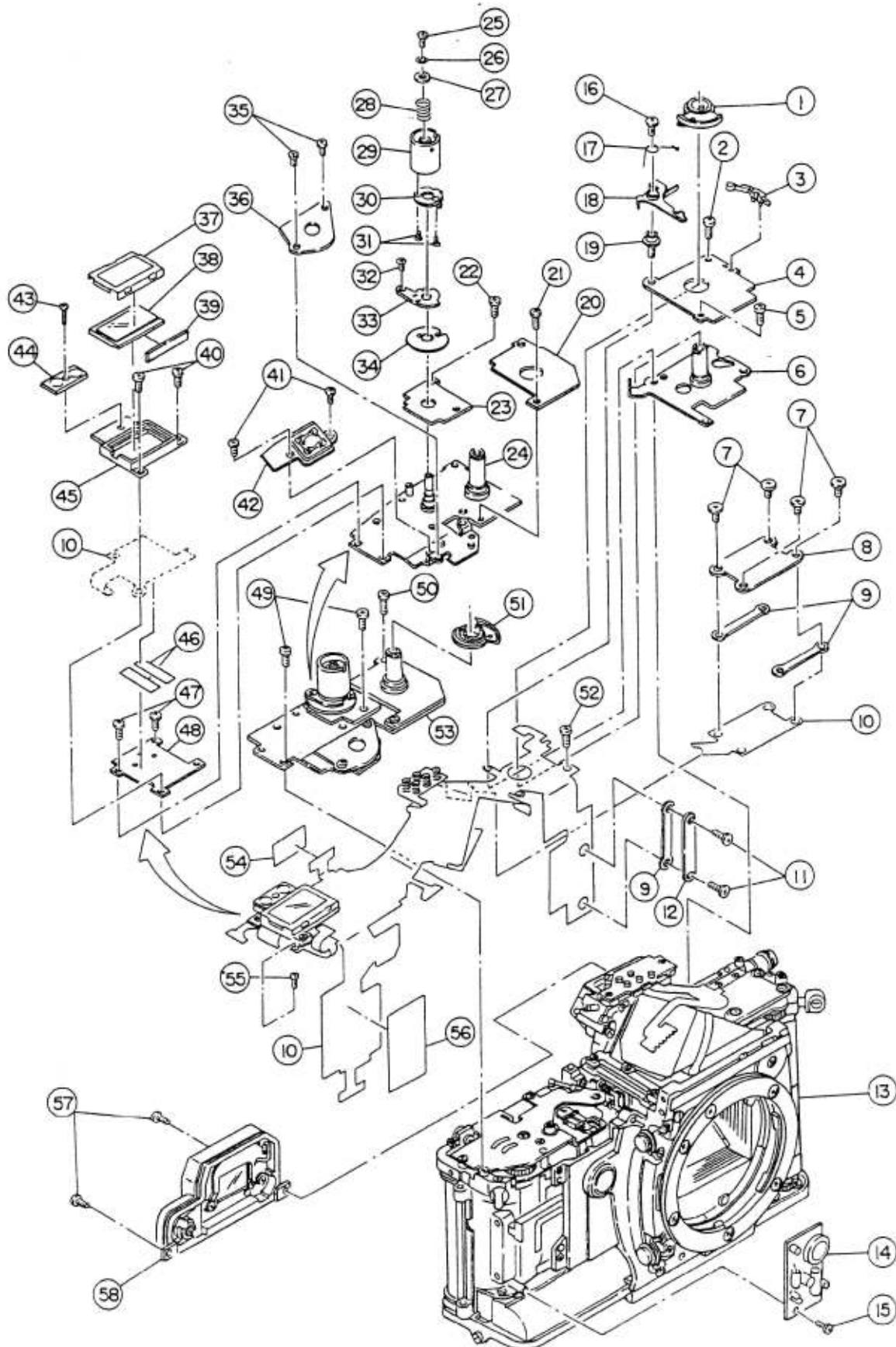
ASSEMBLING CHART





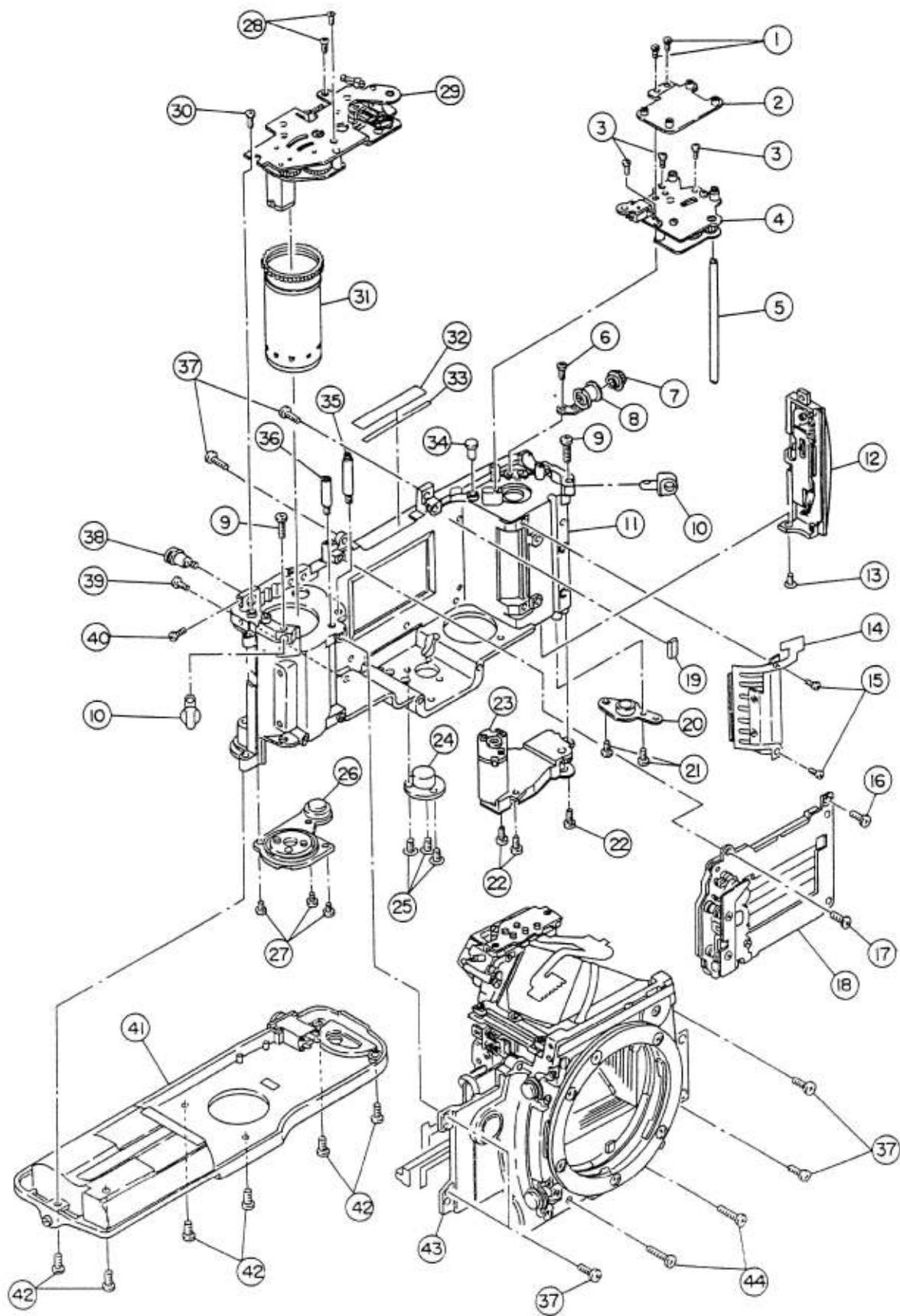
PARTS NO.	DESCRIPTION	QTY
1 1AM22400	SPEED NAME PLATE	1
2 1AA97510	SHUTTER DIAL COVER	1
3 69102566	S. DIAL S.S	2
4 1AH26200	S. DIAL	1
5 1AH29000	DIAL S.S	2
6 1AH26600	S. ILLUMINATION BOARD HOLDER	1
7 1AM21920	S. DIAL CLICK	1
8 66701520	STEEL BALL (ϕ 1.5)	4
9 1AH26400	S. DIAL HOLDER	1
10 17419300	PRESSURE PLATE SHEET	1
11 1AMB8000	TOP COVER ASS'Y (See No.4)	1
12 61812529	TOP COVER ASS'Y S.S	5
13 61814029	TOP COVER ASS'Y S.S	1
14 1AH28510	EXP. COMPENSATION DIAL	1
15 1AH28900	EXP. COMPENSATION CLICK	1
16 1AH29100	EXP. COMPENSATION STOP PLATE	1
17 1AM23200	EXP. COMPENSATION NAME PLATE	1
18 14126100	ASA DIAL COVER	1
19 1AH28700	EXP. COMPENSATION NAME PLATE HOLDER	1
20 1AM24310	D. DIAL COVER	1
21 1AM24220	D. NAME PLATE	1
22 61802026	D. NAME PLATE S.S	2
23 1AM24100	D. DIAL COLLAR	1
24 1AA85630	DIOPTIC ADJUSTMENT KNOB PLATE	1
25 66001055	DIOPTIC ADJUSTMENT KNOB S.S	1
26 1AH88610	DIOPTIC ADJUSTMENT KNOB	1
27 1AH89600	DIOPTIC ADJUSTMENT KNOB WASHER	1
28 13916500	RELEASE CAP (S)	1
29 13916400	R. SOCKET DECORATING RING	1
30 1AMB7000	BACK COVER ASS'Y (See No.8)	1
31 1AH20900	U/D BUTTON	2
32 *	BODY	1
33 1AM29400	FRONT PLATE (R)	1
34 61912526	FRONT PLATE (R) S.S	3
35 1AM28510	R. RUBBER TAPE	1
36 1AM29600	FRONT PLATE RUBBER (R)	1
37 61802529	FRONT COVER S.S	3
38 1AM29900	FRONT COVER	1
39 1AM29000	BOTTOM COVER SHEET	1
40 17419900	BOTTOM COVER SCREW STOPPER	1
41 *	BOTTOM COVER	1
42 17419820	BOTTOM COVER SCREW	1
43 1AM29100	BOTTOM COVER PROTECTOR	1
44 5EDLSGL3PR8**01	SELF-TIMER LED	1
45 68113576	SELF-TIMER LED BOARD S.S	1
46 1AH53000	SELF-TIMER LED BOARD	1
47 61912526	FRONT PLATE (L) S.S	4
48 1AM29540	FRONT PLATE (L)	1
49 1AM28610	L. RUBBER TAPE (M)	1
50 1AM28710	L. RUBBER TAPE (S)	1
51 1AH15200	SELF-TIMER WINDOW	1
52 1AM28810	L. RUBBER TAPE (L)	1
53 1AM29710	FRONT PLATE RUBBER (L)	1
39~43 1AMB8500	BOTTOM COVER ASS'Y	1

Parts marked * are not available.



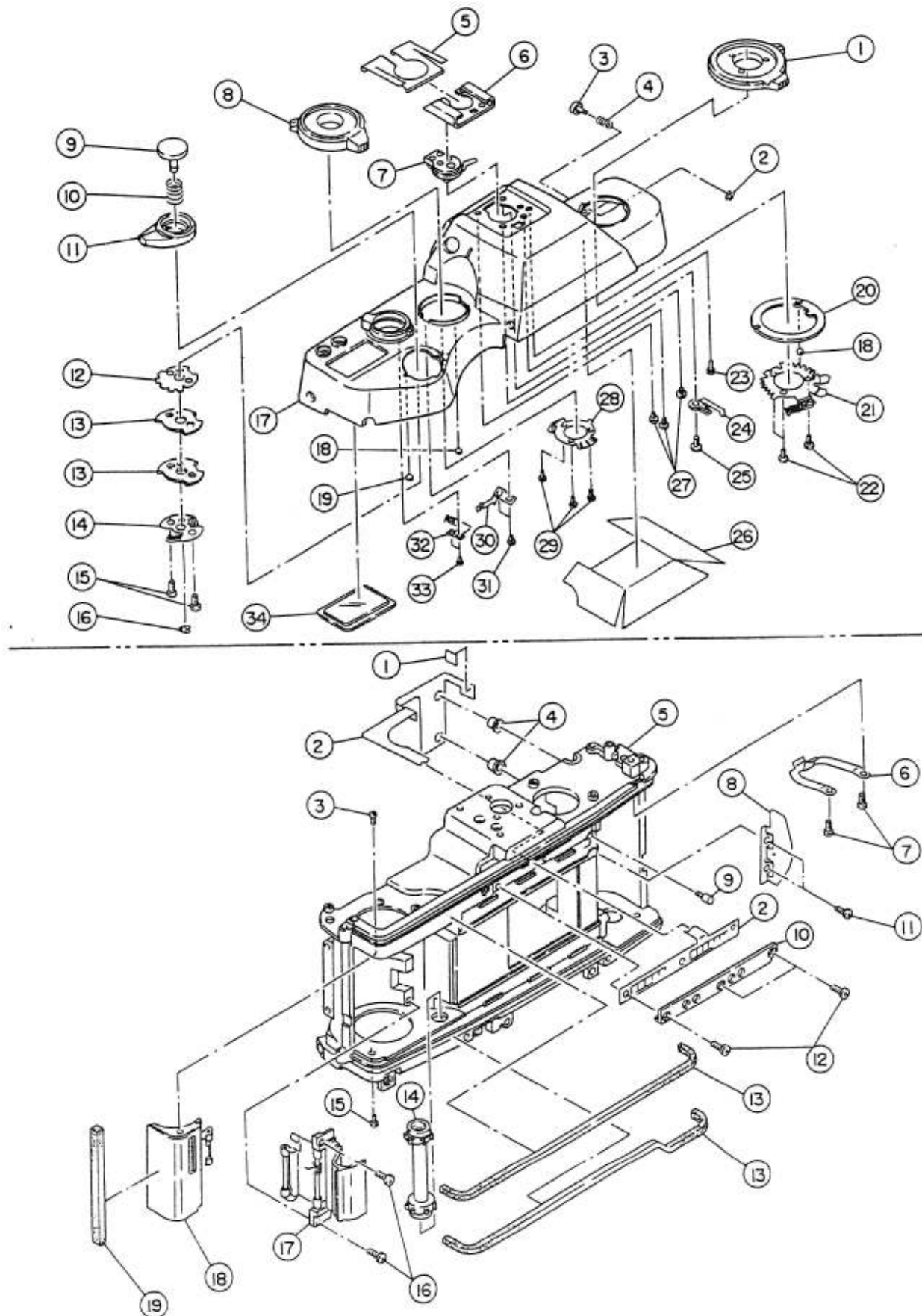
	PARTS NO.	DESCRIPTION	QTY
1	1AHA4B00	EXP. COMPENSTION BRUSH SW ASS'Y	1
2	63914026	SHUTTER BOARD S.S	1
3	1AM21810	ISO/CF SWITCH	1
4	1AM53310	SHUTTER BOARD	1
5	63912526	SHUTTER BOARD S.S	1
6	1AMB4500	S. DIAL BASE PLATE ASS'Y	1
7	66001010	INDICATOR CONNECT PLATE S.S	4
8	1AM13000	INDICATOR CONNECT PLATE	1
9	1AM12510	FPC CONNECT RUBBER	3
10	1AME0800	MAIN FPC ASS'Y	1
11	66001025	FPC CONNECT PLATE S.S	2
12	1AM12220	FPC CONNECT PLATE	1
13	*	BODY	1
14	1AME1000	DC/DC CONVERTER ASS'Y	1
15	66001081	DC/DC CONVERTER ASS'Y S.S	1
16	66001049	MODE LOCK LEVER ASS'Y S.S	1
17	1AM27810	MODE LOCK SPRING	1
18	1AMB4600	MODE LOCK LEVER ASS'Y	1
19	1AH23810	MODE LOCK SHAFT	1
20	1AM53100	EXP. COMPENSATION BOARD	1
21	63912526	EXP. COMPENSATION BOARD S.S	1
22	63912526	DRIVE BOARD S.S	1
23	1AM53200	DRIVE BOARD	1
24	*	RELEASE BASE PLATE	1
25	61913026	DRIVE DIAL HOLDER S.S	1
26	60321810	WASHER	1
27	1AM24700	DRIVE MODE DIAL SP PRESSURE COLLAR	1
28	1AA27020	DRIVE MODE DIAL SPRING	1
29	1AM24000	DRIVE DIAL HOLDER	1
30	1AMB4400	DRIVE MODE HANDING PLATE ASS'Y	1
31	61802026	DRIVE MODE HANDING PLATE ASS'Y S.S	2
32	61813026	DRIVE MODE LOCK PLATE S.S	1
33	1AM25600	DRIVE MODE LOCK PLATE	1
34	1AMB4200	DRIVE BRUSH SW ASS'Y	1
35	61912026	MAIN SW BOARD S.S	2
36	1AM53010	MAIN SW BOARD	1
37	1AM26620	EXTERNAL LCD RETAINER	1
38	1AM50200	EXTERNAL LCD PANEL	1
39	1AM26510	EXTERNAL LCD CONNECT RUBBER	1
40	63912526	EXTERNAL LCD HOLDER S.S	2
41	61912026	L. SW UNIT S.S	2
42	17427010	L. SW UNIT	1
43	61904026	U/D SW S.S	1
44	1AM26900	U/D SWITCH	1
45	1AM26430	EXTERNAL LCD HOLDER	1
46	*	DOUBLE-STICK TAPE	2
47	63912526	LCD BASE PLATE S.S	2
48	1AM26820	LCD BASE PLATE	1
49	63912526	RELEASE BASE PLATE ASS'Y S.S	2
50	63914026	RELEASE BASE PLATE ASS'Y S.S	1
51	1AMB4100	EXP. COMPENSATION BRUSH SW (2) ASS'Y	1
52	63912526	MAIN FPC ASS'Y S.S	1
53	1AMB4000	RELEASE BASE PLATE ASS'Y	1
54	*	ACETATE CLOTH TAPE	1
55	61901822	MAIN FPC ASS'Y S.S	1
56	1AM12000	DC/DC CONVERTER SHEET	1
57	61924026	EYE-PIECE ASS'Y S.S	2
58	1AMF0600	EYE-PIECE ASS'Y	1

Parts marked * are not available.



	PARTS NO.	DESCRIPTION	QTY
1	61913526	FPC CONNECT BASE PLATE ASS'Y S.S	2
2	1AMB1300	FPC CONNECT BASE PLATE ASS'Y	1
3	61913526	REWIND BASE PLATE (UPPER) ASS'Y S.S	3
4	1AMB0800	REWIND BASE PLATE (UPPER) ASS'Y (See No.7)	1
5	1AM41820	DRIVE SHAFT	1
6	61913022	SYNCHRO SOCKET ASS'Y S.S	1
7	13913800	SYNCHRO CAP	1
8	1AMB0200	SYNCHRO SOCKET ASS'Y	1
9	61927026	STRAP HOLDER S.S	2
10	1AA10510	STRAP HOLDER	2
11	*	BODY	1
12	1AHA1Q00	LOCK PLATE UNIT ASS'Y	1
13	66001122	LOCK PLATE UNIT ASS'Y S.S	1
14	174B1400	DX ASS'Y	1
15	61913022	DX ASS'Y S.S	2
16	66001001	SHUTTER UNIT S.S	1
17	66001065	SHUTTER UNIT S.S	1
18	1AM30100	SHUTTER UNIT	1
19	17478400	S. MOQUETTE (2)	1
20	1AMB0700	BOTTOM COVER SCREW HOLDER ASS'Y	1
21	61923026	BOTTOM COVER SCREW HOLDER ASS'Y S.S	2
22	63914026	REWIND BASE PLATE (LOWER) ASS'Y S.S	3
23	1AMB1400	REWIND BASE PLATE (LOWER) ASS'Y (See No.7)	1
24	1AM10200	TRIPOD SOCKET	1
25	63824522	TRIPOD SOCKET S.S	3
26	17438200	SPOOL HOLDER	1
27	63911826	SPOOL HOLDER S.S	3
28	61813026	WINDING UNIT ASS'Y S.S	2
29	1AMB1700	WINDING UNIT ASS'Y (See No.7)	1
30	61913522	WINDING UNIT ASS'Y S.S	1
31	1AM31600	SPOOL	1
32	1AH88200	LIGHT-PROOF CURTAIN (1)	1
33	1AM30200	SHUTTER LIGHT-PROOF CURTAIN TAPE	1
34	1AM11700	CARTRIDGE SW PIN	1
35	1AM25200	RELEASE BASE PLATE POST	1
36	1AM34910	FW BASE PLATE BODY POST	1
37	63925026	MIRROR BOX ASS'Y S.S	6
38	1AMB2800	R. SOCKET ASS'Y	1
39	61924029	SHUTTER UNIT S.S	1
40	66001164	R. SOCKET ASS'Y S.S	1
41	1AMB7900	CELL CASE ASS'Y (See No.8)	1
42	61925026	CELL CASE ASS'Y S.S	6
43	*	MIRROR BOX ASS'Y (See No.5,6)	1
44	66001060	MIRROR BOX ASS'Y S.S	2

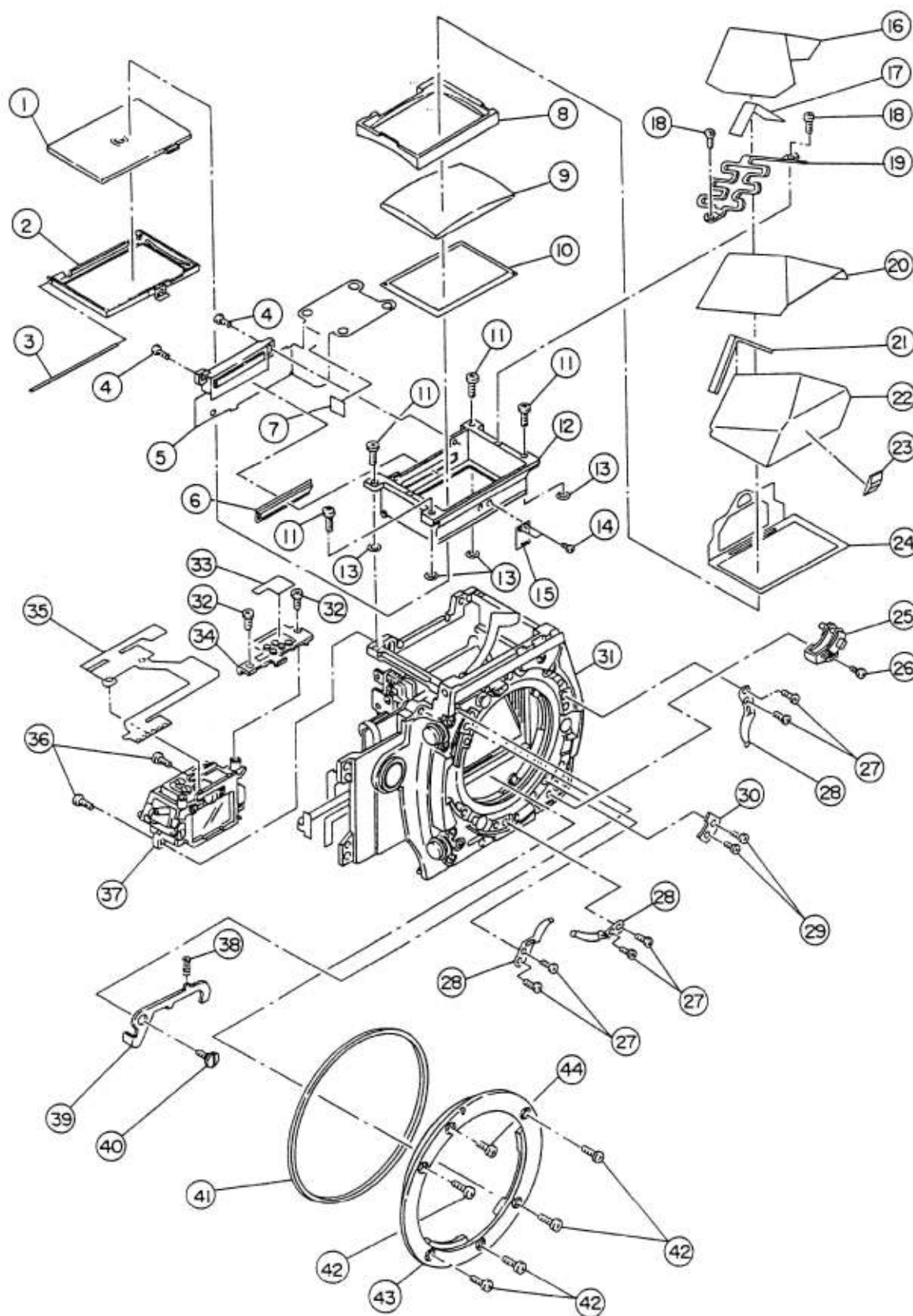
Parts marked * are not available.



PARTS NO.	DESCRIPTION-	QTY
1 1AH22710	MODE LEVER	1
2 66101225	E RING (E-12)	1
3 14116700	S. LOCK BUTTON	1
4 13919200	S. LOCK BUTTON SPRING	1
5 1AM20320	SHOE PLATE SPRING	1
6 1AM20210	ACCESSORY SHOE	1
7 1AMB8400	SHOE CONTACT ASS'Y	1
8 1AH23110	ABC LEVER	1
9 17421610	RELEASE BUTTON	1
10 1AH22000	RELEASE SPRING	1
11 1AM25030	MAIN SW LEVER	1
12 1AH21800	MAIN SW CLICK	1
13 1AH21900	MAIN SW PLATE	2
14 17426020	MAIN SWITCH	1
15 69114076	MAIN SW CLICK S.S	2
16 66101225	E RING (E-12)	1
17 *	TOP COVER	1
18 66701520	STEEL BALL (ϕ 1.5)	2
19 66701220	STEEL BALL (ϕ 1.2)	1
20 1AM21510	MODE ADJ. PLATE	1
21 1AMB8200	MODE CLICK ASS'Y	1
22 69103066	MODE LEVER S.S	3
23 1AM22300	SHOE SW PIN	1
24 1AM20420	SHOE CONTACT PLATE (1) ASS'Y	1
25 61912526	SHOE CONTACT PLATE (1) ASS'Y S.S	1
26 1AH25000	FPC INSULATION COVER	1
27 61912022	ACCESSORY SHOE S.S	3
28 1AMB8300	ABC CLICK ASS'Y	1
29 69103066	ABC CLICK ASS'Y S.S	3
30 1AM22920	LIGHT METERING CLICK PLATE	1
31 61901226	LIGHT METERING CLICK PLATE S.S	2
32 1AM23810	LIGHT METERING BRUSH SWITCH	1
33 61901426	LIGHT METERING BRUSH SW S.S	2
34 1AM21010	LCD WINDOW	1

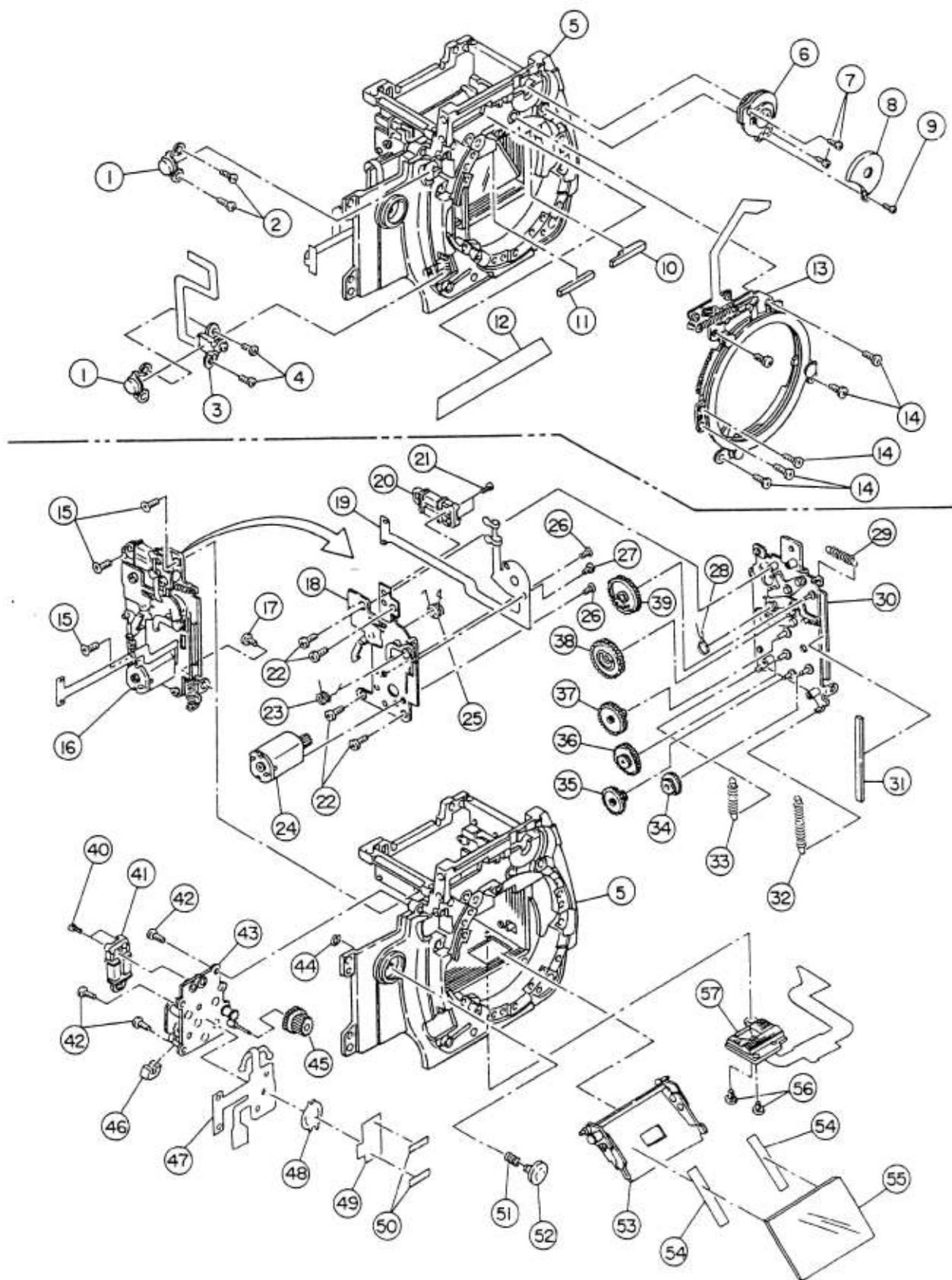
1 1AM11900	BOTTOM FPC TAPE	1
2 1AM51500	BACK COVER FPC	1
3 69113576	HINGE COVER ASS'Y S.S	1
4 1AH10300	CONNECT POST	2
5 *	BODY	1
6 17445600	CARTRIDGE LIFTER	1
7 61913029	CARTRIDGE LIFTER S.S	2
8 17445510	CARTRIDGE HOLDER	1
9 14710500	FILM GUIDE PIN	1
10 1AM13510	CONTACT COVER	1
11 61913029	CARTRIDGE HOLDER S.S	2
12 66001167	CONTACT COVER S.S	3
13 1AM18800	BODY MOQUETTE	2
14 17437100	SPROCKET	1
15 66001187	HINGE COVER ASS'Y S.S	1
16 63913526	FILM FIXER ASS'Y S.S	2
17 17481100	FILM FIXER ASS'Y	1
18 1AMB0600	HINGE COVER ASS'Y	1
19 17413600	LOCK CLAW MOQUETTE (2)	1

Parts marked * are not available.



PARTS NO.	DESCRIPTION	QTY
1 1AH84900	FOCUSING SCREEN	1
2 1AMF0200	FS HOLDER ASS'Y	1
3 1AM83000	FS HINGE SHAFT	1
4 63902226	FINDER LCD ASS'Y S.S	2
5 1AMF0400	FINDER LCD ASS'Y	1
6 1AM82310	FINDER INDICATOR PRISM	1
7 1AM81800	FINDER INDICATOR FPC TAPE	1
8 1AM82000	PENTA PRISM SPACER	1
9 1AH84600	CONDENSER LENS	1
10 1AH84400	VIEWFINDER FRAME (A)	1
11 63915526	PENTA PRISM HOLDER S.S	4
12 1AM82230	PENTA PRISM HOLDER	1
13 12866700	FOCUS ADJUST WASHER (t:0.02)	4
12866600	FOCUS ADJUST WASHER (t:0.05)	4
60311812	FOCUS ADJUST WASHER (t:0.1)	4
60321810	FOCUS ADJUST WASHER (t:0.2)	4
60331817	FOCUS ADJUST WASHER (t:0.3)	4
60341812	FOCUS ADJUST WASHER (t:0.4)	4
60351810	FOCUS ADJUST WASHER (t:0.5)	4
60361817	FOCUS ADJUST WASHER (t:0.6)	4
14 61901626	FS LOCK SPRING (S) S.S	2
15 1AM82700	FS LOCK SPRING (S)	1
16 17484210	PENTA COVER	1
17 *	DOUBLE-STICK TAPE	1
18 61913026	PENTA PRISM RETAINING SPRING S.S	2
19 1AM82110	PENTA PRISM RETAINING SPRING	1
20 1AH84800	PENTA PRISM COVER	1
21 1AH85000	PENTA PRISM DUST-PROOF MOQUETTE	1
22 1AM84100	PENTA PRISM	1
23 1AA82200	PENTA PRISM RETAINING PLATE	1
24 1AM82510	VIEWFINDER FRAME (B)	1
25 1AMG1100	THETA BASE PLATE ASS'Y	1
26 61912522	THETA BASE PLATE ASS'Y S.S	1
27 61913026	MOUNT SPRING S.S	6
28 13981230	MOUNT SPRING	3
29 61913026	MOUNT STOPPER S.S	2
30 13981300	MOUNT STOPPER	1
31 *	MIRROR BOX	1
32 69214076	ACCESSORY SHOE BASE S.S	2
33 1AM81700	SHOE BASE TAPE	1
34 1AM83210	ACCESSORY SHOE BASE	1
35 1AME0600	LIGHT METERING FPC ASS'Y	1
36 63914026	DIOPTRIC ADJUSTER ASS'Y S.S	2
37 *	DIOPTRIC ADJUSTER	1
38 1AA78510	LENS LOCK LEVER SPRING	1
39 1AA78420	LENS LOCK LEVER	1
40 1AA78600	LENS LOCK LEVER S.S	1
41 1AM79000	MOUNT RING	1
42 61925522	BODY MOUNT S.S	5
43 1AA75000	BODY MOUNT	1
44 66001138	BODY MOUNT S.S	1
25~31, 38~44, 1AMA2100	MIRROR BOX ASS'Y	(See No.6) 1
32~35, 37, 1AMF0500	DIOPTRIC ADJUSTER ASS'Y	1

Parts marked * are not available.



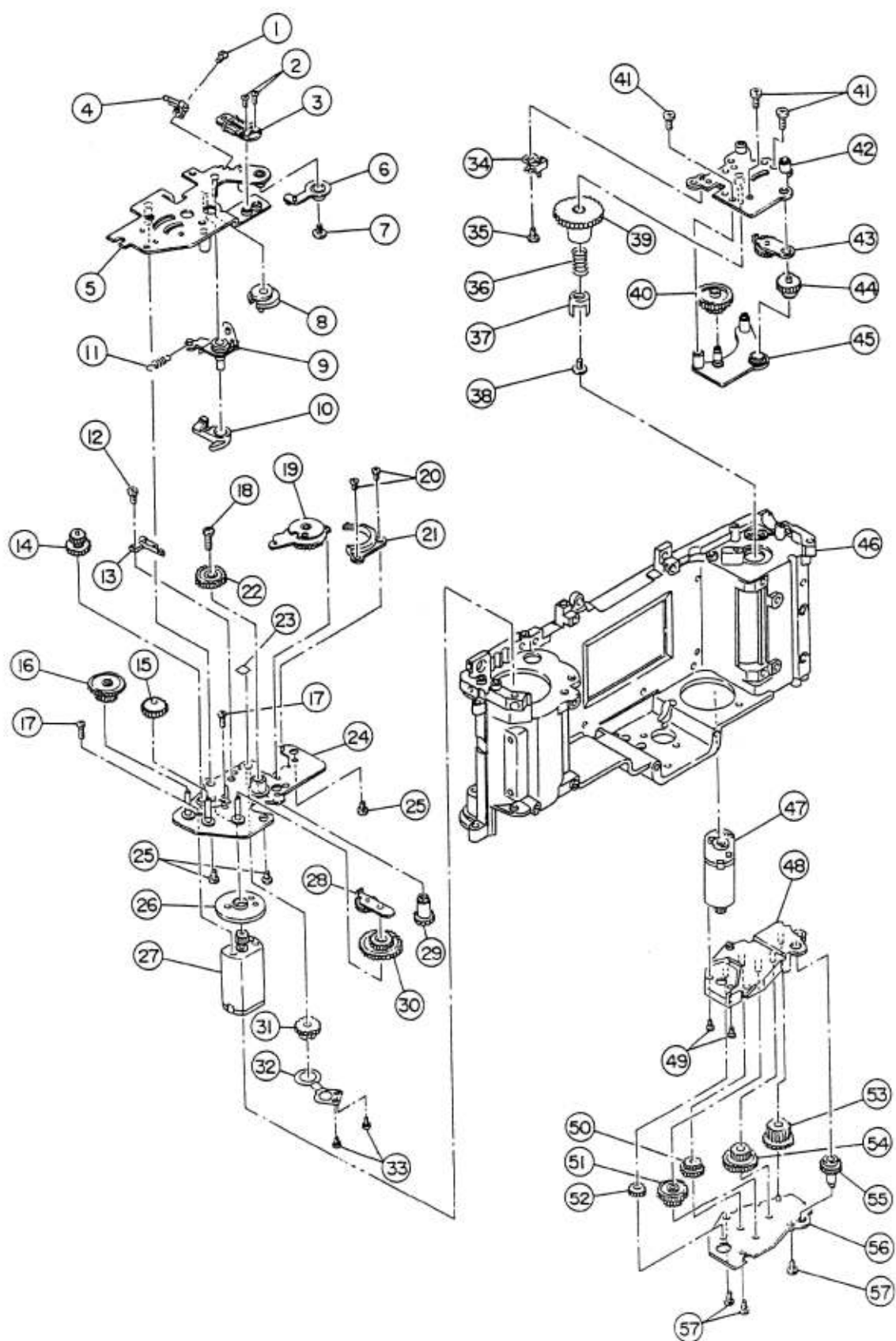
	PARTS NO.	DESCRIPTION	QTY
1	1AMG0900	LENS LOCK BUTTON ASS'Y	2
2	61913026	LENS LOCK BUTTON ASS'Y S.S	2
3	1AMG1000	PREVIEW SWITCH ASS'Y	1
4	61913026	PREVIEW SWITCH ASS'Y S.S	2
5	*	MIRROR BOX	1
6	1AMG0600	APERTURE CODE ASS'Y	1
7	61913026	APERTURE CODE ASS'Y S.S	2
8	1AA78700	APERTURE INTERLOCK COVER	1
9	61902022	APERTURE INTERLOCK COVER S.S	1
10	1AA75310	MIRROR CUSHION (R)	1
11	1AA75210	MIRROR CUSHION (L)	1
12	1AA74910	FRONT COVER LIGHT-PROOF CURTAIN	1
13	1AMG0200	RING PLATE ASS'Y	1
14	61913026	RING PLATE ASS'Y S.S	6
15	61812226	MIRROR BASE PLATE ASS'Y S.S	3
16	1AMG1900	MIRROR BASE PLATE ASS'Y	1
17	63913026	MIRROR BASE PLATE ASS'Y S.S	1
18	*	MIRROR BASE PLATE (UPPER)	1
19	1AM51900	MIRROR FPC	1
20	1AD87400	MAGNET	1
21	61903526	MAGNET S.S	2
22	63913026	MIRROR BASE PLATE (UPPER) S.S	4
23	1AM74820	FC CHARGE LEVER SPRING	1
24	1AMG2300	MIRROR MOTOR ASS'Y	1
25	1AM73800	S. HOLD LEVER SPRING	1
26	61812026	MIRROR MOTOR ASS'Y S.S	2
27	61911826	MIRROR FPC S.S	1
28	1AM74210	S. MG LEVER SPRING	1
29	1AM72910	MIRROR UP LEVER SPRING	1
30	*	MIRROR BASE PLATE (LOWER)	1
31	1AM70800	MIRROR BASE PLATE SHEET	1
32	1AM73300	APERTURE LEVER SPRING	1
33	1AM72710	S. CHARGE LEVER SPRING	1
34	1AM71210	MIRROR GEAR (2)	1
35	1AM71300	MIRROR GEAR (3)	1
36	1AM71400	MIRROR GEAR (4)	1
37	1AM71500	MIRROR GEAR (5)	1
38	1AM71630	MIRROR CAM (1)	1
39	1AMG2100	MIRROR CAM (2) ASS'Y	1
40	61903526	APERTURE MAGNET S.S	2
41	1AG84600	APERTURE MAGNET	1
42	63912526	FC BASE PLATE ASS'Y S.S	3
43	*	FC BASE PLATE	1
44	66101525	E RING (E-15)	1
45	1AMG2400	FC GEAR (1) ASS'Y	1
46	5ENCRP11133**01	PHOTO-COUPLER	1
47	1AM51600	APERTURE PC-FPC	1
48	1AA91210	CHECK SWITCH	1
49	1AM62600	CHECK SW TAPE	1
50	1AM70800	MIRROR BASE PLATE SHEET	2
51	13931300	RELEASE SPRING	1
52	1AA79210	CHECK BUTTON	1
53	*	MIRROR FRAME	1
54	16871710	M. ADHESIVE TAPE	2
55	1AM80100	MAIN MIRROR	1
56	63912026	TTL FLASH AUTO IC ASS'Y S.S	2
57	1AME0100	TTL FLASH AUTO IC ASS'Y	1

40,41,43,46~50, 1AMG2500 FC BASE PLATE ASS'Y 1

1~11,13~17,40~57, 1AMA2100 MIRROR BOX ASS'Y 1

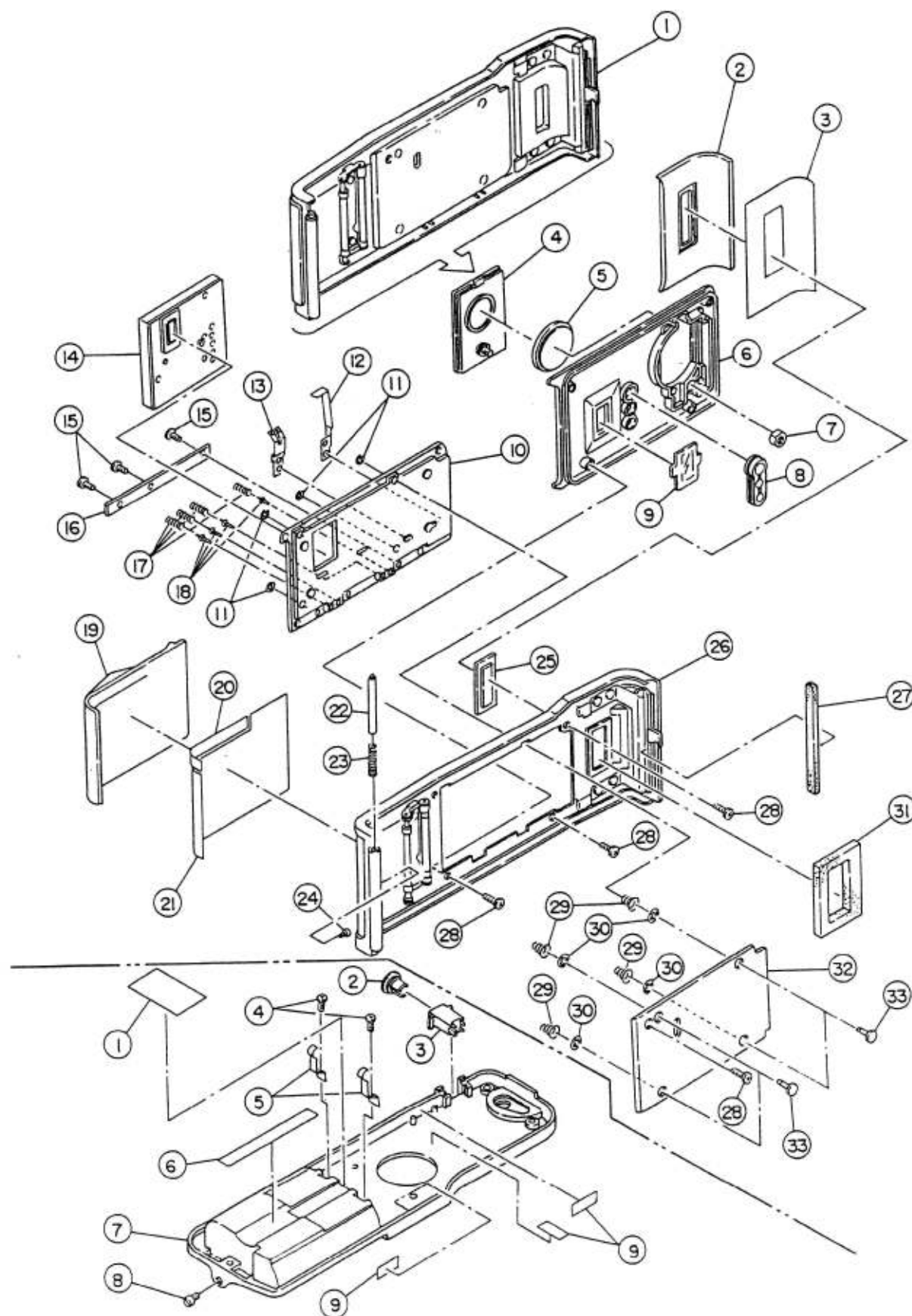
(See No.5)

Parts marked * are not available.



PARTS NO.	DESCRIPTION	QTY
1 63912526	REWIND SWITCH S.S	1
2 63903526	APERTURE MAGNET S.S	2
3 1AG84600	APERTURE MAGNET	1
4 1AA57400	REWIND SWITCH	1
5 *	FW UPPER BASE PLATE	1
6 1AMB2600	MAGNET LEVER ASS'Y	1
7 66001049	MAGNET LEVER ASS'Y S.S	1
8 1AM32410	FRAME LIMITING CAM (UPPER)	1
9 1AMB2700	FRAME CHARGE LEVER ASS'Y	1
10 1AM32710	FRAME LIMITING LEVER	1
11 1AM33110	FRAME RELEASE SPRING	1
12 63912526	MU SWITCH S.S	1
13 1AA57100	MU SWITCH	1
14 1AMB2200	FRICTION GEAR ASS'Y	1
15 1AM35000	FW IDLE GEAR	1
16 1AM31200	FW GEAR (1)	1
17 61904526	FW MOTOR ASS'Y S.S	3
18 69216566	FW GEAR (3) S.S	1
19 1AMB2000	FRAME LIMITING GEAR ASS'Y	1
20 61911826	BOARD COVER S.S	2
21 1AM35410	BOARD COVER	1
22 1AM31400	FW GEAR (3)	1
23 1AM34300	FRAME TAPE	1
24 *	FW LOWER BASE PLATE	1
25 66001068	FW LOWER BASE PLATE S.S	3
26 1AM31800	MOTOR SPACER	1
27 1AMB1900	FW MOTOR ASS'Y	1
28 1AMB2400	FW EPICYCLIC GEAR ASS'Y	1
29 1AM31500	FW GEAR (4)	1
30 1AM31310	FW GEAR (2)	1
31 17436910	SPROCKET GEAR (A) (Select)	1
17437010	SPROCKET GEAR (Select)	1
32 1AM35120	SPROCKET GEAR HOLDER	1
33 61901826	SPROCKET GEAR HOLDER S.S	2
34 1AD23600	POP-UP SWITCH	1
35 63913026	POP-UP SWITCH S.S	1
36 16868700	RW CLAW SPRING	1
37 1AA44000	R. FORK	1
38 66001042	R. FORK S.S	1
39 1AMB1000	FORK CASE ASS'Y	1
40 1AM41710	RW GEAR (8)	1
41 66001068	RW UPPER BASE PLATE S.S	3
42 *	RW UPPER BASE PLATE	1
43 1AMB1100	RW EPICYCLIC GEAR ASS'Y	1
44 1AM41610	RW GEAR (7)	1
45 *	RW LOWER BASE PLATE	1
46 *	BODY	1
47 1AMB1500	RW MOTOR ASS'Y	1
48 *	RW GEAR BOX	1
49 61912526	RW MOTOR ASS'Y S.S	2
50 1AM41110	RW GEAR (2)	1
51 1AM41210	RW GEAR (3)	1
52 1AM41010	RW GEAR (1)	1
53 1AM41410	RW GEAR (5)	1
54 1AM41310	RW GEAR (4)	1
55 1AM41510	RW GEAR (6)	1
56 *	RW GEAR BOX PLATE	1
57 69113576	RW GEAR BOX PLATE S.S	3

Parts marked * are not available.



	PARTS NO.	DESCRIPTION	QTY
1	1AMB7000	BACK COVER ASS'Y	1
2	1AM15700	BACK COVER RUBBER (S)	1
3	1AM15410	BACK COVER TAPE (S)	1
4	1AHA7E00	BATTERY CAP (D) ASS'Y	1
5	*	LITHIUM BATTERY (CR2025)	1
6	1AM16910	BACK COVERING	1
7	1AH16800	BATTERY CAP SCREW SOCKET	1
8	38415400	MODE BUTTON	1
9	1AH19400	DATE WINDOW	1
10	1AH16720	DM HOLDER	1
11	66101225	E RING (E-12)	4
12	38415840	D. BATTERY CONTACT (+)	1
13	38415930	D. BATTERY CONTACT (-)	1
14	38417000	AUTO DATE MODULE	1
15	69113076	D.B BOARD ASS'Y S.S	3
16	1AMB7500	D.B BOARD ASS'Y	1
17	1AH15900	BACK COVER CONTACT SPRING	4
18	1AH15800	D. CONTACT	4
19	1AM15610	BACK COVER RUBBER (L)	1
20	1AM15300	BACK COVER TAPE (L2)	1
21	1AM15210	BACK COVER TAPE (L1)	1
22	13113000	HINGE SHAFT (1)	1
23	17417700	HINGE SHAFT SPRING	1
24	66001166	HINGE SHAFT RELEASE PIN	1
25	17416610	FILM CHECK WINDOW	1
26	*	BACK COVER (D)	1
27	17417300	LOCK CLAW MOQUETTE	1
28	69114076	BACK COVERING S.S	4
29	1AH17810	PRESSURE PLATE SPRING	4
30	66161522	CS CLIP	4
31	17417240	FILM CHECK WINDOW MOQUETTE	1
32	1AM17510	PRESSURE PLATE	1
33	1AM15810	PRESSURE PLATE SHAFT	4
<hr/>			
1	1AM28900	BATTERY CHAMBER LIGHT-SHIELD TAPE	1
2	1AM18510	EXTERNAL POWER CAP	1
3	1AM18400	EXTERNAL POWER JACK	1
4	69113576	BATTERY CONTACT S.S	2
5	1AM28300	BATTERY CONTACT	2
6	*	DOUBLE-STICK TAPE	1
7	*	CELL CASE	1
8	1AM28200	BOTTOM COVER GUIDE	1
9	*	DOUBLE-STICK TAPE	2

Parts marked * are not available.