

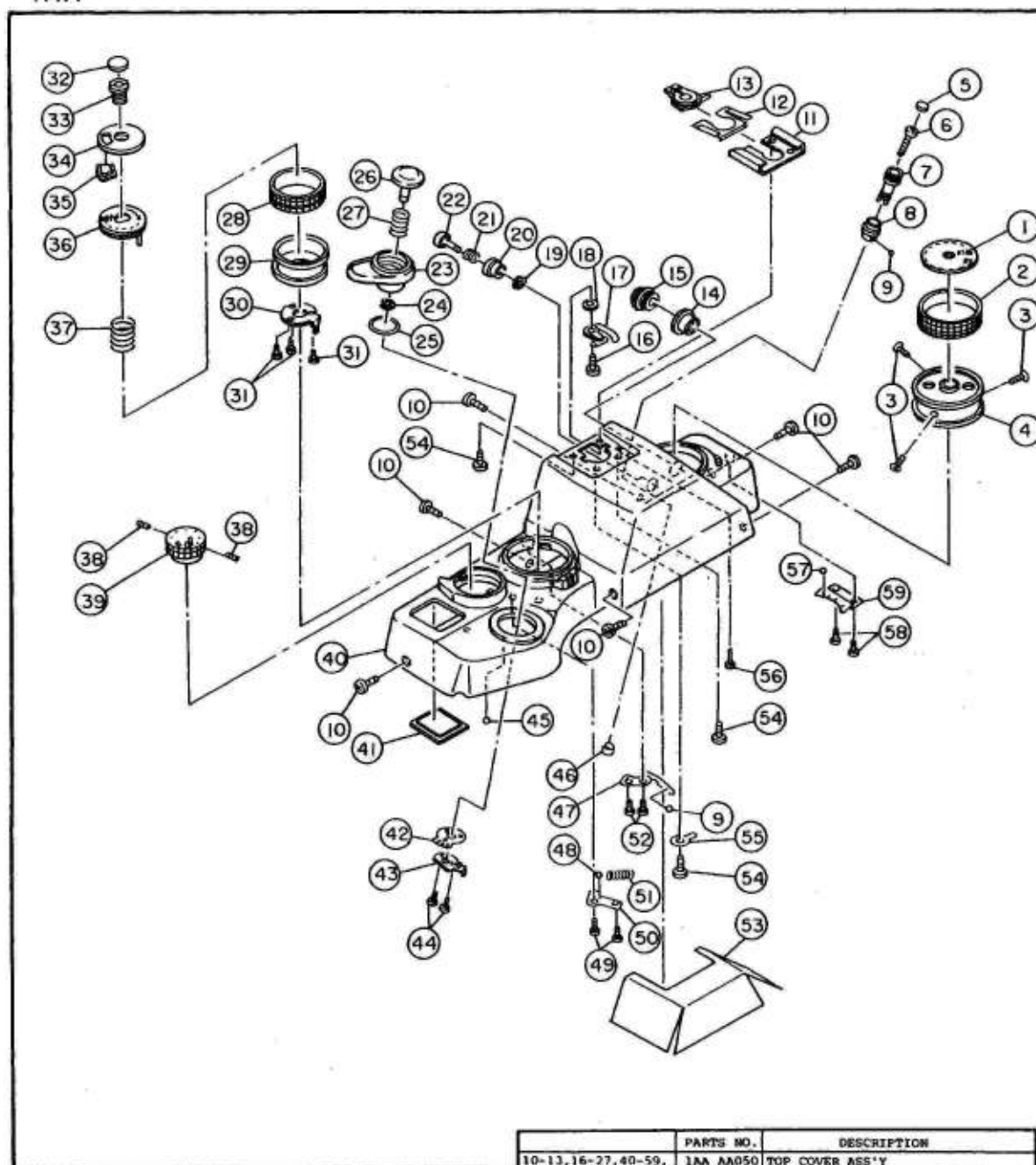
# CONTAX RTS III

## ASSEMBLING CHART

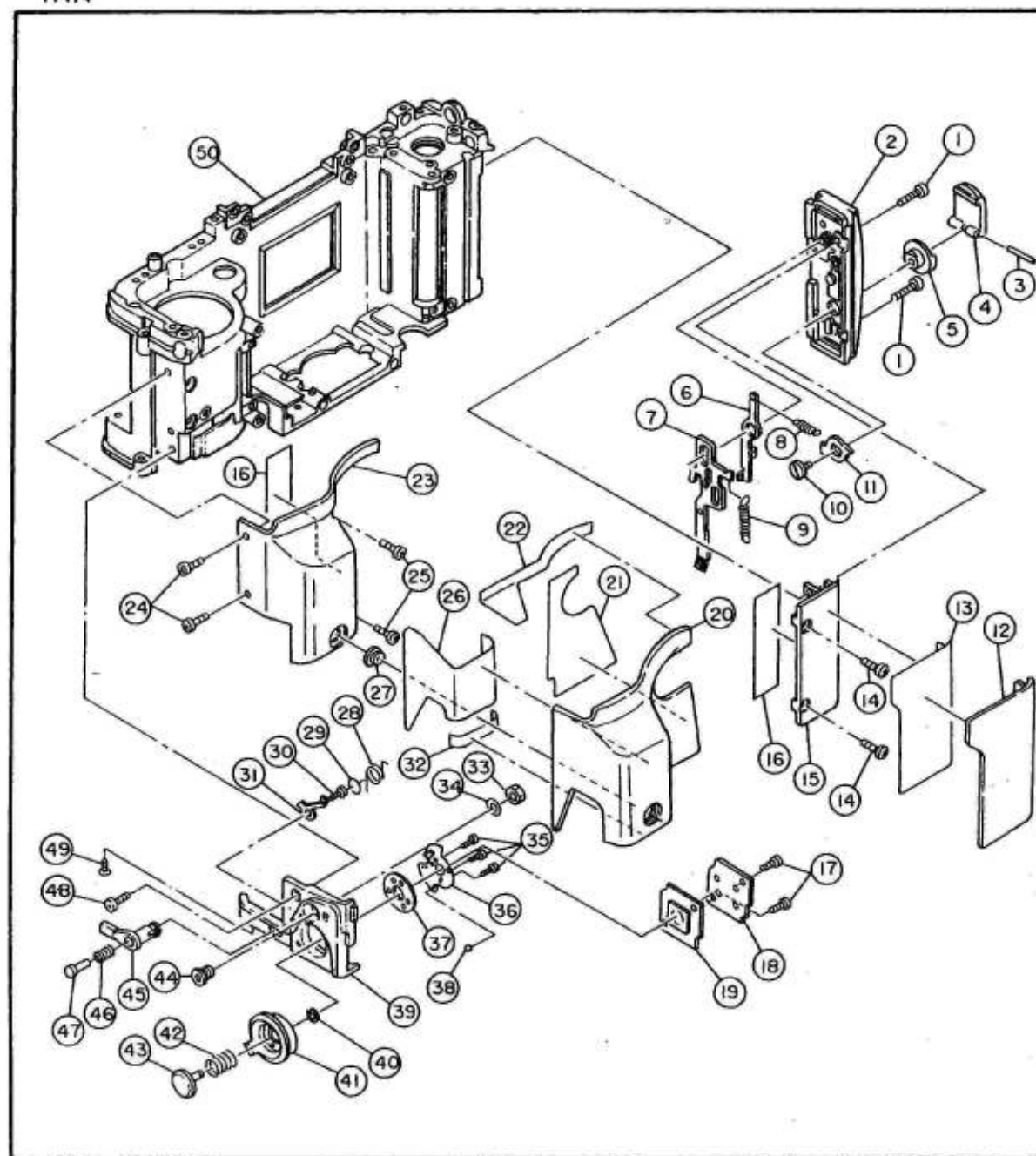


KYOCERA CORPORATION  
Optical Equipments Division

901201

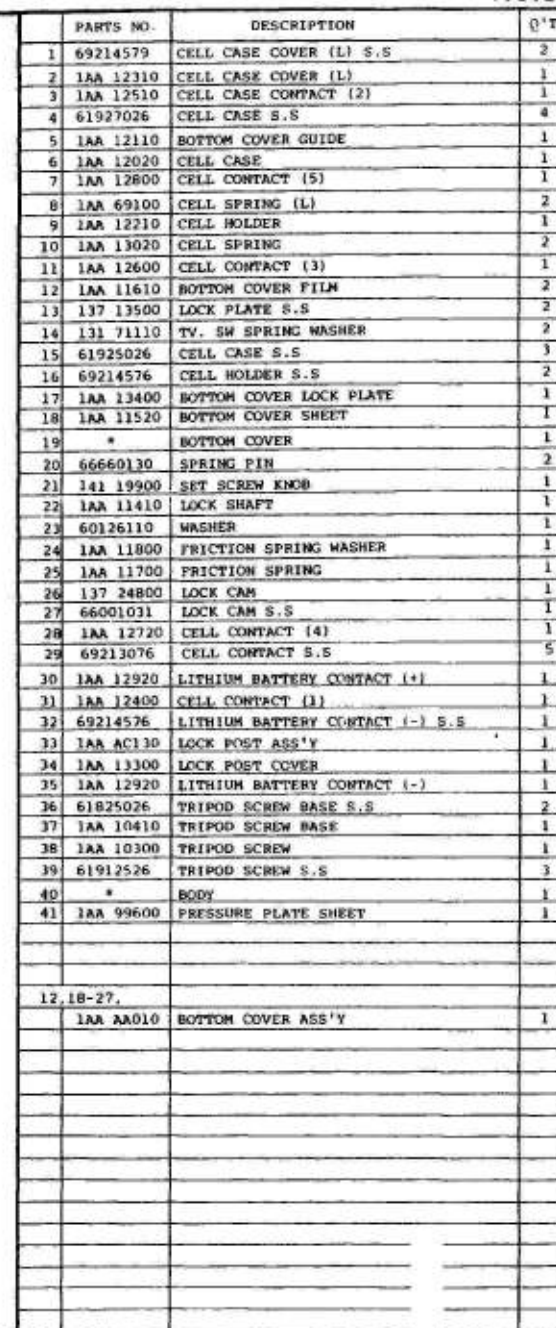


PARTS MARKED \* IS NOT AVAILABLE.

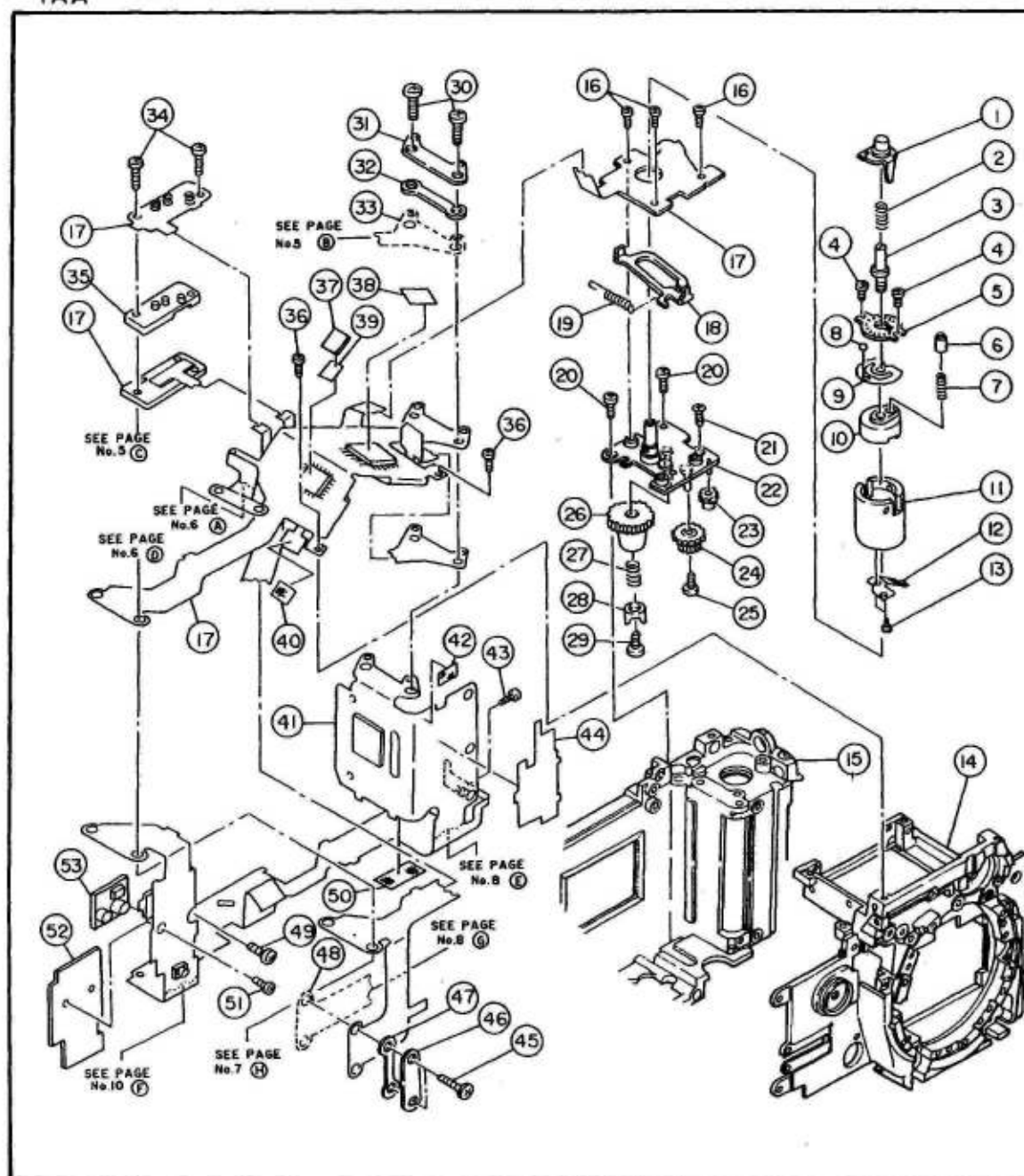


PARTS NO.	DESCRIPTION	Q'TY
1 63917029	BACK COVER LOCK COVER S.S	2
2 1AA 17000	BACK COVER LOCK COVER	1
3 1AA 99700	SPING PIN	1
4 1AA 17120	BACK COVER LOCK KNOB	1
5 1AA 17220	BACK COVER LOCK KNOB BASE	1
6 1AA 17800	LOCK PLATE RETAINING LEVER	1
7 1AA AA380	BACK COVER LOCK PLATE ASS'Y	1
8 1AA 17910	LOCK PLATE RETAINING LEVER SPRING	1
9 1AA 17710	BACK COVER LOCK PLATE SPRING	1
10 1AA 17510	BACK COVER RELEASE LEVER SCREW	1
11 1AA 17310	BACK COVER RELEASE LEVER	1
12 1AA 13900	FRONT PLATE RUBBER (RIGHT)	1
13 1AA 68000	FRONT PLATE RUBBER (RIGHT) TAPE	1
14 61927026	FRONT PLATE (RIGHT) S.S	2
15 1AA 13800	FRONT PLATE (RIGHT)	1
16 1AA 69000	FRONT PLATE GUARD SHEET	2
17 69113076	VERTICAL RELEASE SW BASE PLATE S.S	2
18 1AA 39610	VERTICAL RELEASE SW BASE PLATE	1
19 1AA 56610	RELEASE P.C BOARD (2) ASS'Y	1
20 1AA 14110	FRONT PLATE RUBBER (LEFT)	1
21 1AA 68100	FRONT PLATE RUBBER (LEFT) TAPE-S	1
22 1AA 67900	FRONT PLATE RUBBER (LEFT) TAPE-D	1
23 1AA 14010	FRONT PLATE (LEFT)	1
24 61924026	FRONT PLATE (LEFT) S.S	2
25 61927026	FRONT PLATE (LEFT) S.S	2
26 1AA 68210	FRONT PLATE RUBBER (LEFT) TAPE-L	1
27 1AA 14210	SELF-TIMER WINDOW	1
28 1AA 29330	REWIND KNOB RETURN SPRING	1
29 1AA 29410	REWIND KNOB SPRING	1
30 61902526	REWIND KNOB OPERATION PLATE F.S	1
31 1AA 29210	REWIND KNOB OPERATION PLATE	1
32 1AA 68300	FRONT PLATE RUBBER (LEFT) TAPE-U	1
33 137 40700	FIRST CURTAIN BRAKE NUT	1
34 60223112	WASHER	1
35 69113076	VERTICAL RELEASE CLICK S.S	3
36 1AA 39430	VERTICAL RELEASE CLICK	1
37 1AA 39310	VERTICAL RELEASE HOLDER PLATE	1
38 66701620	STEEL BALL (ø1.6)	1
39 1AA 39530	VERTICAL RELEASE BASE	1
40 66101525	E RING	1
41 1AA 39230	VERTICAL RELEASE LOCK KNOB	1
42 1AA 24410	MAIN SWITCH BUTTON SPRING	1
43 1AA 39000	VERTICAL RELEASE BUTTON	1
44 1AA 14500	BULB SOCKET	1
45 1AA 29020	REWIND KNOB	1
46 1AA 29520	REWIND KNOB LOCK SPRING	1
47 1AA 29100	REWIND KNOB LOCK BUTTON	1
48 63924026	VERTICAL RELEASE BASE S.S	1
49 61813026	VERTICAL RELEASE BASE S.S	1
50 *	BODY	1
28-31, 33-47,		
1AA AA180	VERTICAL RELEASE BASE ASS'Y	1

PARTS MARKED \* IS NOT AVAILABLE

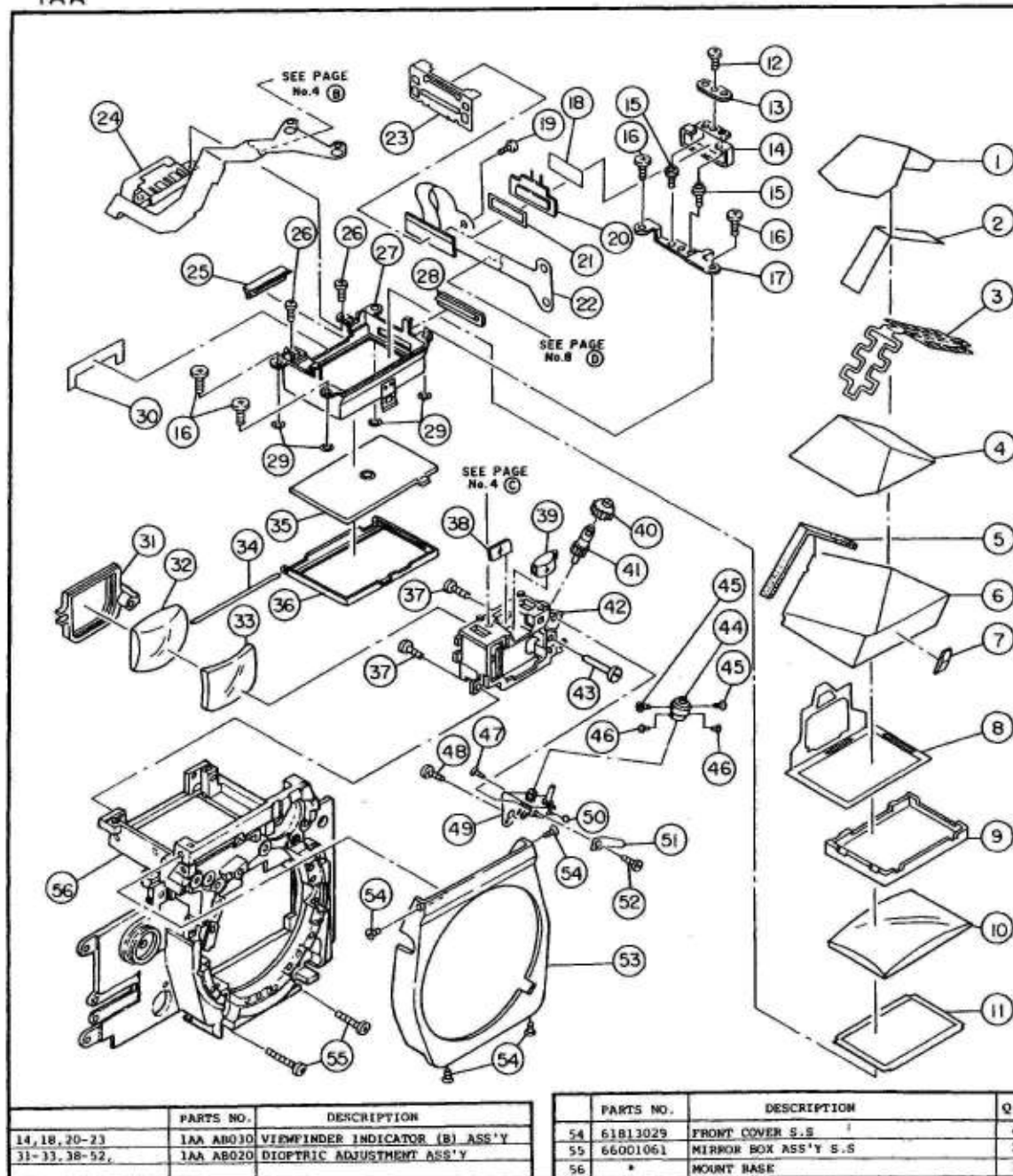


PARTS MARKED \* ARE NOT AVAILABLE



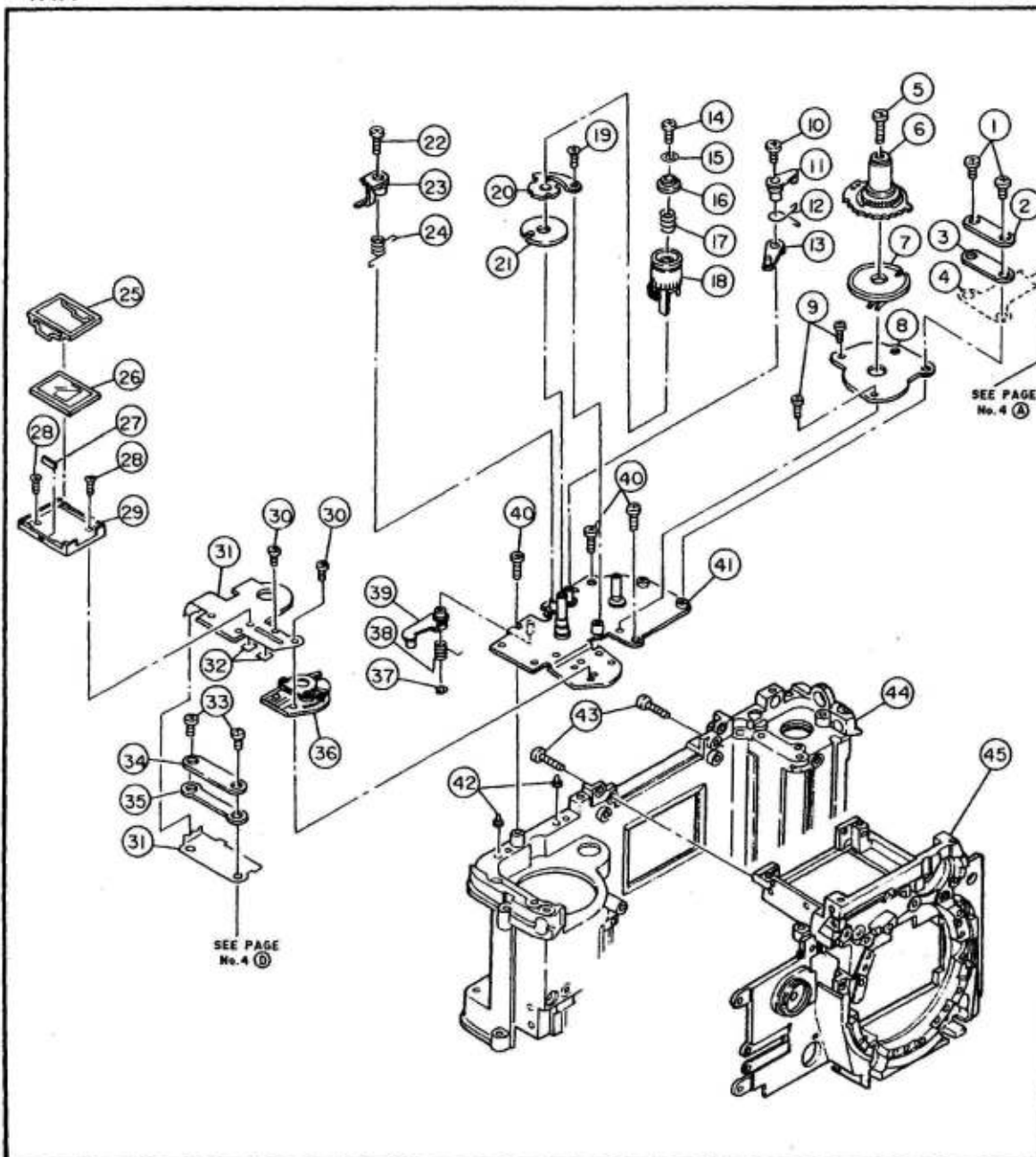
PARTS NO.	DESCRIPTION	Q'TY
1	1AA AA040 S. LOCK BUTTON ASS'Y	1
2	1AA 97200 SHUTTER LOCK SPRING	1
3	1AA 96010 S. DIAL CLICK S.S	1
4	61902526 S. CLICK PLATE S.S	2
5	1AA 96200 S. CLICK PLATE	1
6	1AA 96110 S. CLICK PIN	1
7	1AA 95910 S. CLICK SPRING	1
8	66701520 STEEL BALL (ø1.5)	1
9	1AA 96300 S. CLICK SPRING PLATE	1
10	1AA 95820 S. DIAL CLICK	1
11	1AA 95610 S. DIAL BASE	1
12	1AA 95700 S. DIAL CONTACT	1
13	61901426 S. DIAL CONTACT S.S	2
14	* MOUNT BASE	1
15	* BODY	1
16	63902522 MAIN FPC ASS'Y S.S	3
17	* MAIN FPC	1
18	1AA 95310 MODE LOCK LEVER	1
19	1AA 95410 MODE LOCK SPRING	1
20	61913026 S. DIAL BASE PLATE S.S	2
21	61813026 S. DIAL BASE PLATE S.S	1
22	1AA AC100 S. DIAL BASE PLATE SUBASSEMBLY	1
23	1AA 43200 REWIND GEAR (4)	1
24	1AA 43620 REWIND GEAR (5)	1
25	66001068 REWIND GEAR (5) S.S	1
26	1AA AC110 REWIND FORK CASE ASS'Y	1
27	16868710 RM CLAW SPRING	1
28	1AA 44010 REWIND FORK	1
29	66001042 REWIND FORK S.S	1
30	66001032 FPC CONNECTOR S.S	2
31	1AA 59700 FPC GUIDE	1
32	1AA 58400 FPC CONNECTOR RUBBER (2)	1
33	--- APERTURE LCD PANEL(See Page No.5)	
34	61918026 MAIN FPC ASS'Y S.S	2
35	1AA 86800 ACCESSORY SHOE BASE	1
36	61913522 MAIN FPC ASS'Y S.S	2
37	1AA AE700 RESISTOR P.C BOARD ASS'Y	1
38	* DOUBLE STICK TAPE	1
39	* DOUBLE STICK TAPE	1
40	* ACETATE CLOTH TAPE	1
41	* SUB FPC	1
42	* ACETATE CLOTH TAPE	1
43	61912026 SUB FPC ASS'Y S.S	1
44	* R. DRIVE FPC	1
45	66001032 FPC CONNECTOR S.S	2
46	1AA 58100 FPC CONNECTOR PLATE (1)	1
47	1AA 58300 FPC CONNECTOR RUBBER (1)	1
48	--- SHUTTER FPC(See Page No.8)	
49	* ACETATE CLOTH TAPE	1
50	69213076 DC-DC CONVERTER S.S	1
51	61912526 DC-DC CONVERTER S.S	1
52	1AA 52010 DC-DC CONVERTER	1
53	1AA AE800 FILTER P.C BOARD ASS'Y	1
17, 37, 39,		
1AA AE000 MAIN FPC ASS'Y		1
41, 42, 44,		
1AA AE400 SUB FPC ASS'Y		1

PARTS MARKED \* ARE NOT AVAILABLE



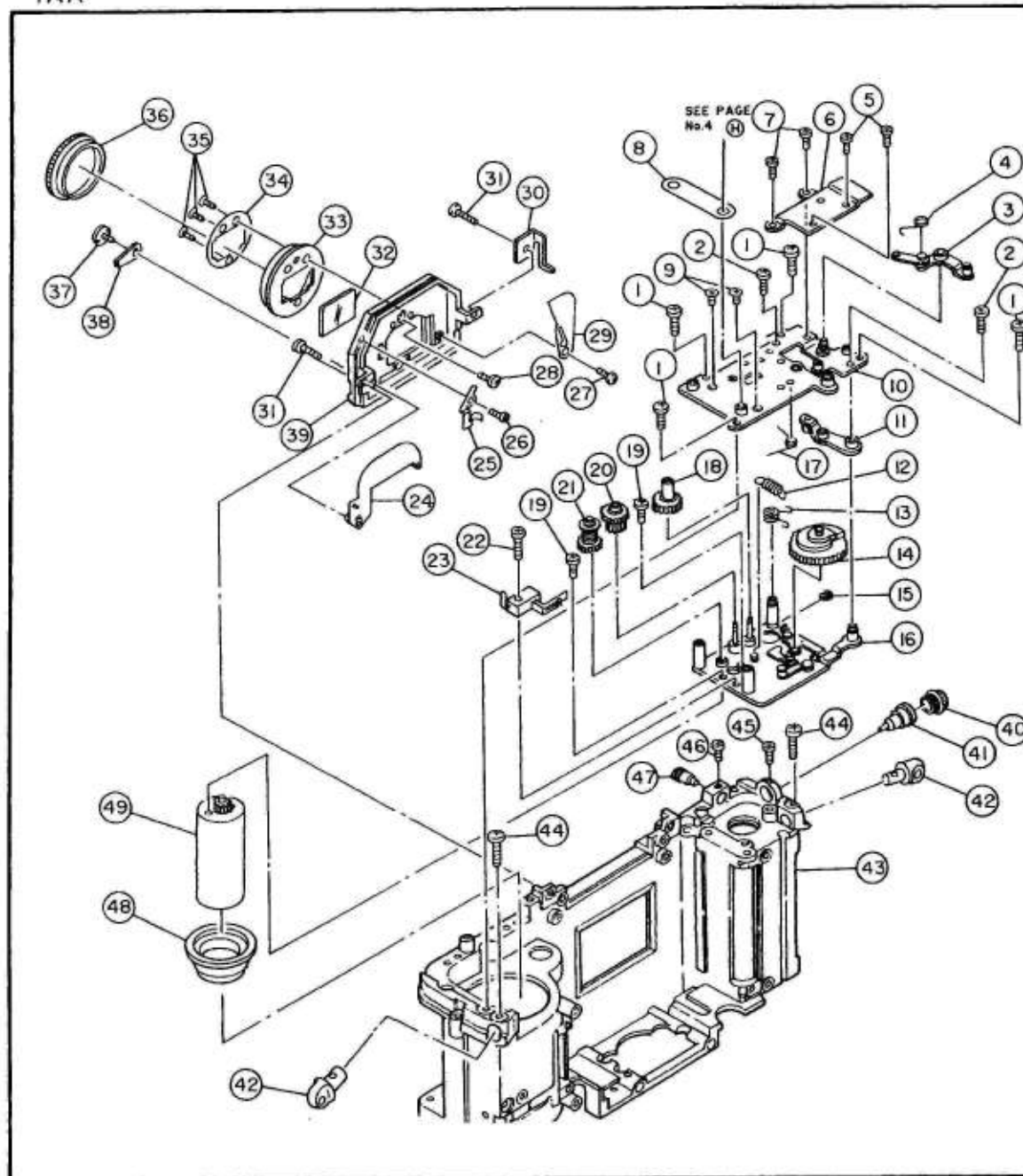
PARTS NO.	DESCRIPTION	Q'TY
1 174 842	PENTA COVER	1
2 *	DOUBLE STICK TAPE	1
3 1AA 81000	PENTA PRISM RETAINING SPRING	1
4 1AA 80900	PENTA PRISM COVER	1
5 1AA 82110	PENTA PRISM DUST-PROOF M'QUETTE	1
6 1AA 80800	PENTA PRISM	1
7 1AA 82200	PENTA PRISM RETAINING PLATE	1
8 1AA 80700	VIEWFINDER FRAME (B)	1
9 1AA 80600	PENTA PRISM SPACER	1
10 1AA 80500	CONDENSER LENS	1
11 1AA 80400	VIEWFINDER FRAME (A)	1
12 63915026	S-LED ADJUSTMENT PLATE (2) S.S	1
13 139 87700	S-LED ADJUSTMENT PLATE (2)	1
14 1AA 81700	VIEWFINDER INDICATOR HOLDER (B)	1
15 1AA 82000	VIEWFINDER INDICATOR ADJUSTMENT S.S	2
16 66001025	PENTA PRISM HOLDER S.S	4
17 1AA 81900	VIEWFINDER INDICATOR BASE	1
18 1AA 81500	EL ADHESIVE TAPE	1
19 61912026	S-LCD PANEL FPC S.S	1
20 1AA 50800	S-EL	1
21 1AA 81600	LCD ADHESIVE TAPE	1
22 1AA 50700	S-LCD PANEL	1
23 1AA 81800	VIEWFINDER INDICATOR RETAINER (B)	1
24 1AA AB230	VIEWFINDER INDICATOR (A) ASS'Y	1
25 1AA 81120	VIEWFINDER INDICATOR PRISM (A)	1
26 69112066	VIEWFINDER INDICATOR (A) ASS'Y S.S	2
27 1AA AB740	PENTA PRISM HOLDER ASS'Y	1
28 1AA 81200	VIEWFINDER INDICATOR PRISM (B)	1
29 128 66700	FOCUS ADJUSTMENT WASHER(E:0.02)	1
128 66600	FOCUS ADJUSTMENT WASHER(E:0.05)	1
60311812	FOCUS ADJUSTMENT WASHER(E:0.1)	1
60321812	FOCUS ADJUSTMENT WASHER(E:0.2)	1
60331812	FOCUS ADJUSTMENT WASHER(E:0.3)	1
60341812	FOCUS ADJUSTMENT WASHER(E:0.4)	1
60351812	FOCUS ADJUSTMENT WASHER(E:0.5)	1
60361812	FOCUS ADJUSTMENT WASHER(E:0.6)	1
30 1AA 69900	DUST-PROOF TAPE	1
31 1AA 86320	EYE-PIECE FRAME	1
32 1AA 86400	EYE-PIECE LENS (B)	1
33 1AA 85700	EYE-PIECE LENS (A)	1
34 1AA 82610	FOCUSING SCREEN HOLDER SHAFT	1
35 1AA 82500	FOCUSING SCREEN	1
36 1AA AR730	FOCUSING SCREEN HOLDER ASS'Y	1
37 61813026	DIOPTRIC ADJUSTMENT ASS'Y S.S	2
38 1AA 86000	CENTER-WEIGHTED METERING MIRROR	1
39 1AA 85900	CENTER-WEIGHTED METERING LENS	1
40 1AA 84830	DIOPTRIC ADJUSTMENT GEAR (3)	1
41 1AA 84710	DIOPTRIC ADJUSTMENT GEAR (2)	1
42 1AA 84120	DIOPTRIC ADJUSTMENT BASE	1
43 1AA 84900	DIOPTRIC ADJUSTMENT FEED SHAFT	1
44 1AA 84320	DIOPTRIC ADJUSTMENT CLUTCH CAP	1
45 61901226	DIOPTRIC ADJUSTMENT CLUTCH CAP S.S	2
46 1AA 85010	DIOPTRIC ADJUSTMENT CLUTCH PIN	2
47 61802026	DIOPTRIC ADJUSTMENT GEAR HOLDER S.S	1
48 66001050	DIOPTRIC ADJUSTMENT FEED SHAFT S.S	1
49 1AA AB220	DIOPTRIC ADJUSTMENT GEAR HOLDER ASS'Y	1
50 66701220	STEEL BALL (#1.2)	1
51 1AA 85510	DIOPTRIC ADJUSTMENT CLICK SPRING	1
52 1AA 85130	DIOPTRIC ADJUSTMENT HOLDER S.S	1
53 1AA 70020	FRONT COVER	1

PARTS MARKED \* ARE NOT AVAILABLE



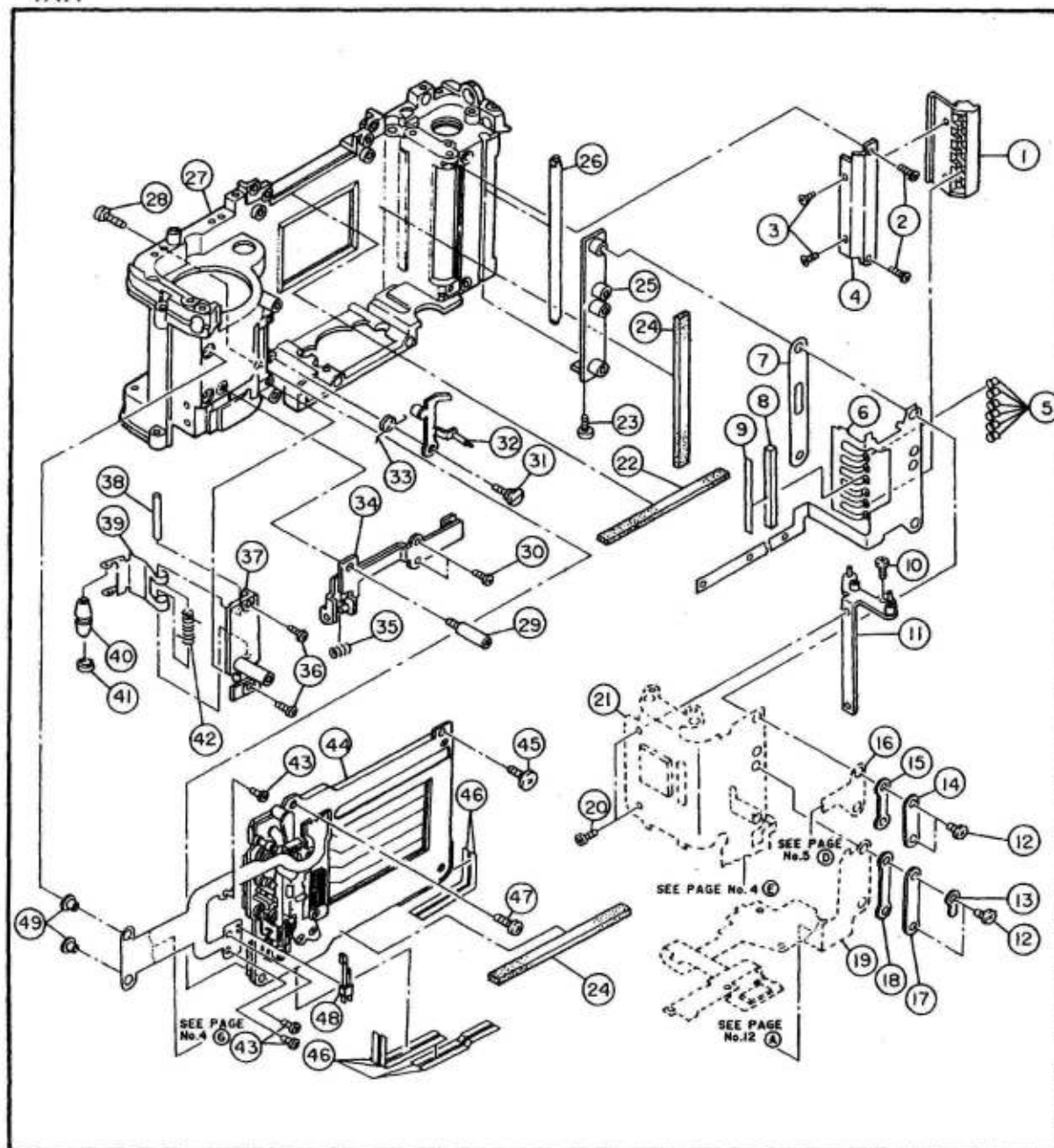
PARTS NO.	DESCRIPTION	Q'TY
1	66001076 ISO CONNECTOR S.S	2
2	1AA 58000 ISO CONNECTOR PLATE	1
3	1AA 57900 ISO CONNECTOR RUBBER	1
4	--- MAIN FPC(See Page No.4)	
5	63924026 ISO LOCK PLATE ASS'Y S.S	1
6	1AA AA420 ISO LOCK PLATE ASS'Y	1
7	1AA AA410 ISO BRUSH PLATE ASS'Y	1
8	1AA 56310 ISO P.C BOARD	1
9	61912026 ISO P.C BOARD S.S	2
10	66001046 EXP. COMPENSATION CLICK LEVER S.S	1
11	1AA AA400 EXP. COMPENSATION CLICK LEVER(1) ASS'Y	1
12	1AA 23510 EXP. COMPENSATION CLICK LEVER SPRING	1
13	1AA AA390 EXP. COMPENSATION CLICK LEVER(2) ASS'Y	1
14	61913026 DRIVE MODE OPERATION PLATE S.S	1
15	60321810 WASHER	1
16	1AA 27100 DRIVE MODE SPRING PRESSURE	1
17	1AA 27020 DRIVE MODE DIAL SPRING	1
18	1AA AA990 DRIVE MODE OPERATION PLATE ASS'Y	1
19	61813026 DRIVE MODE LOCK PLATE S.S	1
20	1AA 26510 DRIVE MODE LOCK PLATE	1
21	1AA AA970 DRIVE MODE CONTACT PLATE ASS'Y	1
22	66001068 MULTI-EXP. RETURN GEAR S.S	1
23	1AA AA980 MULTI-EXP. RETURN GEAR ASS'Y	1
24	1AA 27920 MULTI-EXP. RETURN SPRING	1
25	1AA 28810 COUNTER LCD RETAINER	1
26	1AA 51100 COUNTER LCD PANEL	1
27	1AA 58800 COUNTER LCD CONNECTOR RUBBER	1
28	61813026 COUNTER LCD HOLDER S.S	2
29	1AA 28720 COUNTER LCD HOLDER	1
30	61911522 DRIVE FPC S.S	2
31	1AA 55310 DRIVE FPC	1
32	* MYLAR FILM	2
33	66001076 FPC CONNECTOR S.S	2
34	1AA 58200 FPC CONNECTOR PLATE (2)	1
35	1AA 58400 FPC CONNECTOR RUBBER (2)	1
36	1AA 56500 RELEASE P.C BOARD (1) ASS'Y	1
37	66101225 E RING	1
38	1AA 28420 MULTI-EXP. LOCK LEVER SPRING	1
39	1AA AA430 MULTI-EXP. LOCK LEVER ASS'Y	1
40	63924026 ISO DIAL BASE PLATE S.S	3
41	1AA AA960 ISO DIAL BASE PLATE SUBASSEMBLY	1
42	1AA 10202 BODY LOCATOR PIN	2
43	63926026 MIRROR BOX ASS'Y S.S	2
44	* BODY	1
45	* MOUNT BASE	1

PARTS MARKED \* ARE NOT AVAILABLE



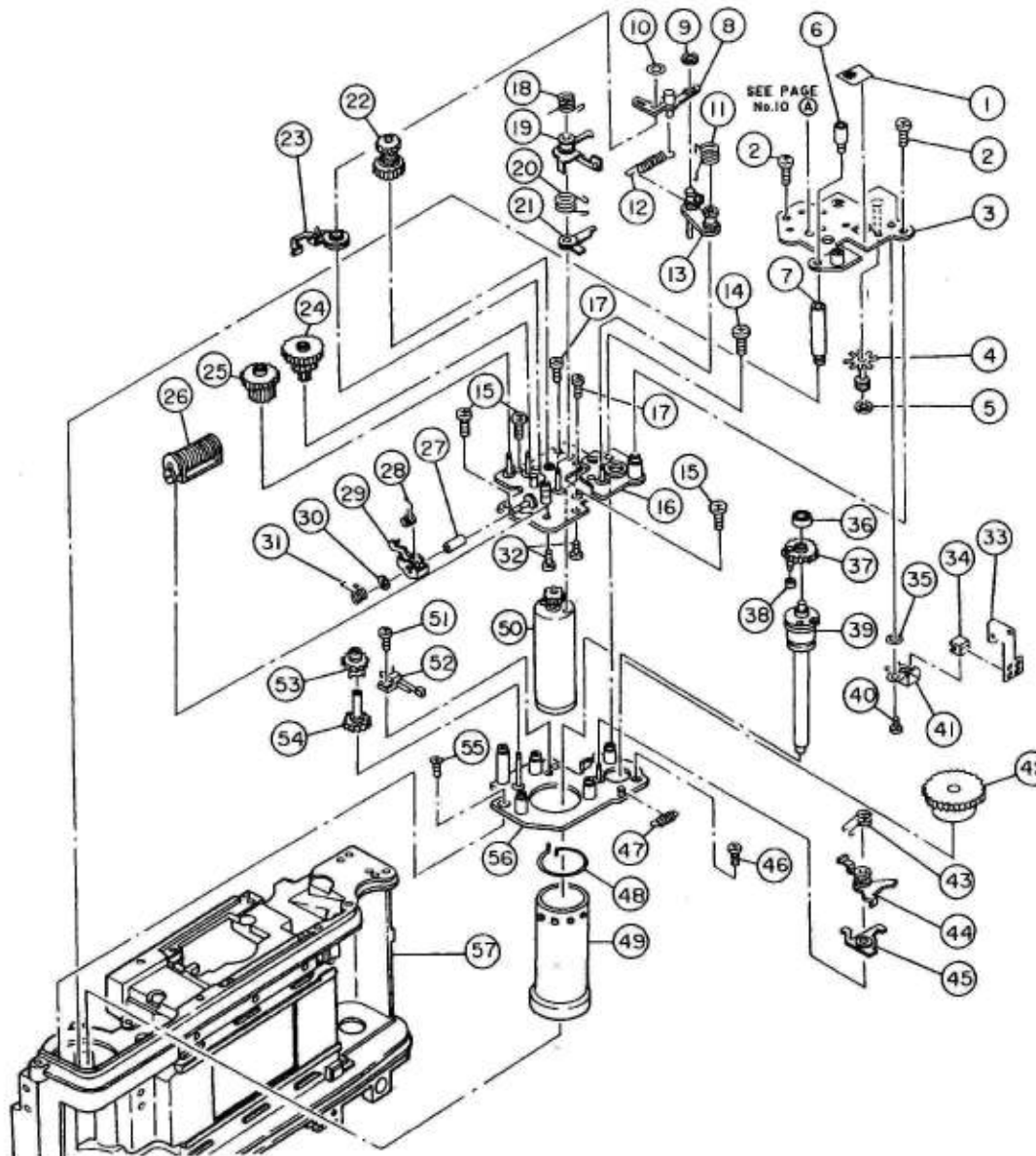
PARTS NO.	DESCRIPTION	Q'TY
1 61923026	S. CHARGE BASE PLATE UNIT S.S	3
2 61903026	S. CHARGE UPPER BASE PLATE S.S	2
3 1AA AA160	QR LEVER UNIT ASS'Y	1
4 1AA 49820	RATCHET SPRING	1
5 61903026	QR BASE PLATE S.S	2
6 1AA 48010	QR BASE PLATE	1
7 61912026	QR BASE PLATE S.S	2
8 1AA 59800	L INSULATION SHEET	1
9 61813026	S. CHARGE UPPER BASE PLATE S.S	2
10 1AA AA610	S. CHARGE UPPER BASE PLATE ASS'Y	1
11 1AA AA630	S. CHARGE LEVER ASS'Y	1
12 1AA 47010	LIMIT LEVER SPRING	1
13 1AA 47100	APERTURE SET ARM SPRING	1
14 1AA AA650	S. CHARGE CAM ASS'Y	1
15 66101512	E RING	1
16 1AA AA640	S. CHARGE LOWER BASE PLATE ASS'Y	1
17 1AA 49310	MULTI-EXP. RELEASE LEVER SPRING	1
18 1AA 46200	S. CHARGE GEAR (4)	1
19 61912226	SHUTTER CHARGE MOTOR S.S	2
20 1AA 46120	S. CHARGE GEAR (3)	1
21 1AA AA620	FRICTION GEAR ASS'Y	1
22 61904022	TIMING SWITCH S.S	1
23 174 41320	TIMING SWITCH	1
24 1AA AC160	EYE-PIECE SHUTTER BLADE (A) ASS'Y	1
25 1AA 88200	EYE-PIECE SHUTTER CLICK PLATE	1
26 61901526	EYE-PIECE SHUTTER CLICK PLATE S.S	1
27 66001050	EYE-PIECE SHUTTER BLADE (B) S.S	1
28 61911826	EYE-PIECE RING BASE S.S	1
29 1AA 87910	EYE-PIECE SHUTTER BLADE (B)	1
30 1AA 56200	TIME CODE RETAINING PLATE	1
31 61914026	EYE-PIECE ASS'Y S.S	2
32 1AA 88900	EYE-PIECE PROTECTION GLASS	1
33 1AA 88530	EYE-PIECE RING BASE	1
34 1AA 88820	EYE-PIECE VIEWFINDER FRAME	1
35 61812828	EYE-PIECE VIEWFINDER FRAME S.S	3
36 1AA 88620	EYE-PIECE RING	1
37 1AA 88310	EYE-PIECE SHUTTER LEVER S.S	1
38 1AA 87720	EYE-PIECE SHUTTER LEVER	1
39 1AA 87520	EYE-PIECE COVER	1
40 139 13800	SYNCHRO CAP	1
41 1AA AA240	S. SOCKET ASS'Y	1
42 1AA 10510	STRAP HOLDER	2
43 *	BODY	1
44 61927026	STRAP HOLDER S.S	2
45 61903022	S. SOCKET S.S	1
46 61913522	R. SOCKET S.S	1
47 1AA AA230	R. SOCKET ASS'Y	1
48 1AA 14320	SPOOL HOLDER	1
49 1AA 51510	SHUTTER CHARGE MOTOR	1
24-29, 32-39,		
1AA AA060	EYE-PIECE A.	1

PARTS MARKED \* IS NOT AVAILABLE



PARTS NO.	DESCRIPTION	Q'TY
1 174 46010	DX CASE	1
2 61913526	DX FPC ASS'Y S.S.	2
3 61812226	DX FIXER S.S.	2
4 174 46400	DX FIXER	1
5 1AA 19910	DX PIN	6
6 1AA 55520	DX FPC	1
7 1AA 57710	SUB FPC INSULATION SHEET	1
8 174 46300	DX RUBBER	1
9 1AA 68900	DX HINGE SPACER	1
10 61813026	CONNECTOR BASE (S) ASS'Y S.S.	1
11 1AA AAB30	CONNECTOR BASE (S) ASS'Y	1
12 66001041	FPC CONNECTOR S.S.	4
13 1AA 29800	LUG PLATE	1
14 1AA 58100	FPC CONNECTOR PLATE (1)	1
15 1AA 58300	FPC CONNECTOR RUBBER (1)	1
16 ---	S-LCD PANEL FPC (See Page No.5)	
17 1AA 58200	FPC CONNECTOR PLATE (2)	1
18 1AA 58400	FPC CONNECTOR RUBBER (2)	1
19 ---	FLASH METERING FPC (See Page No.12)	
20 61912026	SUB FPC ASS'Y S.S.	2
21 ---	SUB FPC ASS'Y (See Page No.4)	
22 1AA 69800	LIGHT-PROOF MOQUETTE	1
23 61923026	CONNECTOR BASE (L) S.S.	1
24 174 17300	LOCK CLAW MOQUETTE	2
25 1AA AA250	CONNECTOR BASE (L) ASS'Y	1
26 1AA 43310	R COUPLING SHAFT	1
27 *	BODY	1
28 61925028	SHUTTER S.S.	1
29 1AA 99000	MECH. BULB PLATE S.S.	1
30 61912526	MECH. BULB PLATE S.S.	2
31 1AA 98810	MECH. BULB LEVR S.S.	1
32 1AA AA210	MECH. BULB LEVER ASS'Y	1
33 1AA 98900	MECH. BULB LEVER SPRING	1
34 *	MECH. BULB SLIDE PLATE	1
35 1AA 98210	MECH. BULB SPRING	1
36 61912526	FILM HOLD BASE S.S.	1
37 1AA 99100	FILM HOLD BASE	1
38 1AA 99200	FILM HOLD SHAFT	1
39 1AA 99310	FILM HOLD PLATE	1
40 1AA 99420	FILM HOLD ROLLER	1
41 174 44301	ROLLER TUBE	1
42 1AA 99520	FILM HOLD SHAFT SPRING	1
43 61912026	SHUTTER FPC S.S.	3
44 1AA 51600	SHUTTER	1
45 66001043	SHUTTER S.S.	1
46 1AA 67701	NIPOR LIGHT-PROOF MOQUETTE	6
47 66001065	SHUTTER S.S.	1
48 1AA 57200	MECH. BULB SWITCH	1
49 1AA 58610	CONNECTOR POST (2)	2
34, 35.		
1AA AA170	MECH. BULB SLIDE PLATE ASS'Y	1

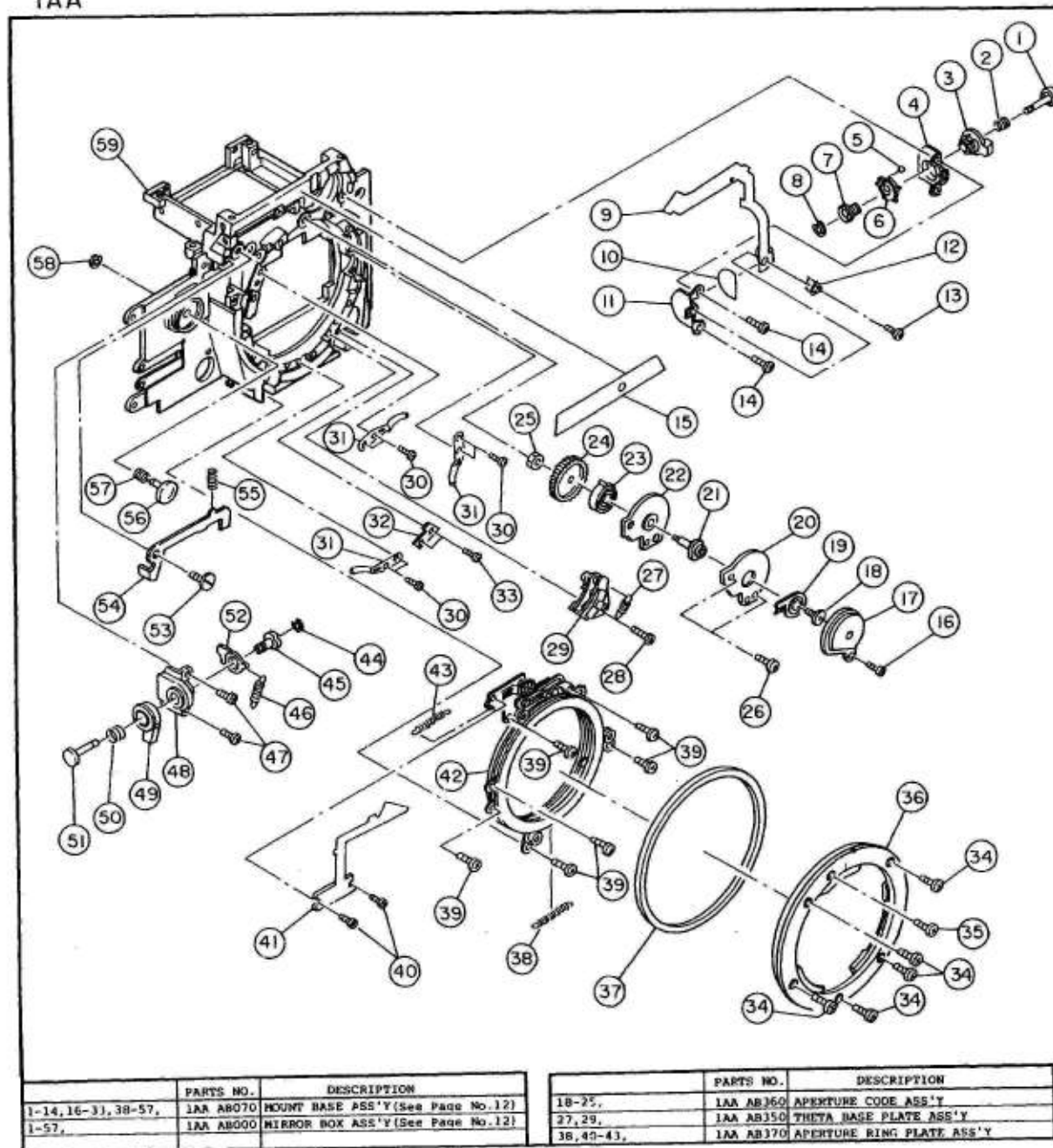
PARTS MARKED \* ARE NOT AVAILABLE



PARTS NO.	DESCRIPTION	Q'TY
1 *	ACETATE CLOTH TAPE	1
2 66001068	WINDING LOWER BASE PLATE S.S	2
3 1AA AAB40	WINDING LOWER BASE PLATE SUBASSEMBLY	1
4 1AA AAB50	WINDING ENCODER ASS'Y	1
5 66101225	E RING	1
6 1AA 36620	WINDING UNIT S.S	1
7 1AA 14410	WINDING UNIT POST	1
8 1AA AAB30	REWIND COUPLING PLATE (1) ASS'Y	1
9 66101225	E RING	1
10 60242612	WASHER	1
11 1AA 34130	REWIND LEVER SPRING	1
12 1AA 37840	REWIND COUPLING PLATE SPRING	1
13 1AA AA560	REWIND LEVER ASS'Y	1
14 66001039	WINDING MID BASE PLATE S.S	1
15 66001068	WINDING MID BASE PLATE S.S	3
16 1AA AA580	WINDING MID BASE PLATE ASS'Y	1
17 63902226	WINDING MOTOR S.S	2
18 1AA 33820	REWIND LEVER HOOK SPRING	1
19 1AA AA690	REWIND LEVER HOOK ASS'Y	1
20 1AA 33720	RELEASE LEVER HOOK SPRING	1
21 1AA AA680	RELEASE LEVER HOOK ASS'Y	1
22 1AA AA530	WINDING GEAR (3) ASS'Y	1
23 1AA AA500	REWIND COUPLING PLATE (2) ASS'Y	1
24 1AA AA510	WINDING GEAR (5) ASS'Y	1
25 1AA AA520	WINDING GEAR (7) ASS'Y	1
26 1AA 51800	SOLENOID PLUNGER	1
27 1AA 34400	CLUTCH LEVER HOLDER	1
28 1AA 34820	CLUTCH LEVER UP SPRING	1
29 1AA AA540	CLUTCH LEVER ASS'Y	1
30 66101225	E RING	1
31 1AA 34720	CLUTCH LEVER DOWN SPRING	1
32 61902226	SOLENOID PLUNGER S.S	2
33 1AA 55900	PERFORATION PFC	1
34 5ENC6PIA67L**01	PHOTO-INTERRUPTER	1
35 60121810	WASHER	2
36 1AA 31600	SPROCKET BEARING	1
37 1AA AA790	SPROCKET GEAR ASS'Y	1
38 1AA 32600	RELEASE LEVER CHARGE ROLLER	1
39 1AA AC310	SPROCKET SHAFT ASS'Y	1
40 61911526	PHOTO-INTERRUPTER S.S	1
41 1AA 37400	WINDING PHOTO-INTERRUPTER RETAINER	1
42 1AA 36020	WINDING GEAR (10)	1
43 1AA 30950	REVOLVING LIMIT LEVER SPRING	1
44 1AA AA590	REVOLVING RELEASE LEVER ASS'Y	1
45 1AA AA670	REVOLVING LIMIT LEVER ASS'Y	1
46 61922526	WINDING UNIT S.S	1
47 1AA 31040	REVOLVING RELEASE LEVER SPRING	1
48 1AA 36310	SPOOL SPRING	1
49 1AA 36220	SPOOL	1
50 1AA 51410	WINDING MOTOR	1
51 61922526	REVOLVING LIMIT SWITCH S.S	1
52 1AA 57310	REVOLVING LIMIT SWITCH	1
53 1AA 31400	WINDING GEAR (8)	1
54 1AA AA550	WINDING GEAR (9) ASS'Y	1
55 61823026	WINDING UNIT S.S	1
56 1AA AA600	WINDING UPPER BASE PLATE ASS'Y	1
57 *	BODY	1

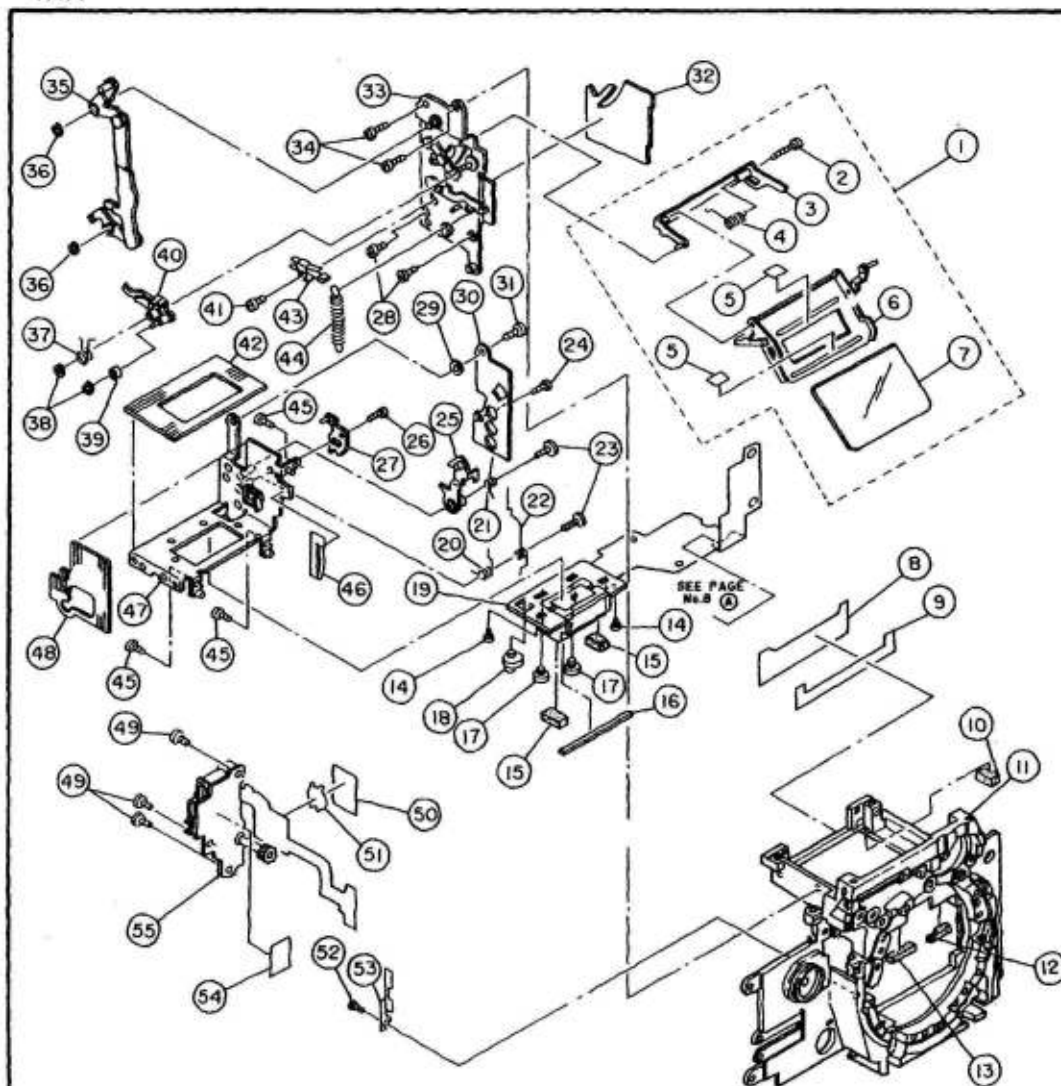
PARTS MARKED \* ARE NOT AVAILABLE





PARTS NO.	DESCRIPTION	Q'TY
1	1AA 93910 LENS LOCK BUTTON	1
2	1AA 94010 LENS LOCK BUTTON SPRING	1
3	1AA 92320 METERING CHANGE KNOB	1
4	1AA AB590 METERING CHANGE BASE PLATE SUBASSEMBLY	1
5	66701220 STEEL BALL (#1.2)	1
6	1AA AB600 METERING CHANGE PLATE SUBASSEMBLY	1
7	1AA 93600 MIRROR UP KNOB S.S	1
8	66101225 E RING	1
9	1AA 55400 METERING CHANGE FPC	1
10	1AA 92800 METERING FPC ADHESIVE TAPE	1
11	1AA 93000 METERING CHANGE FPC PLATE	1
12	1AA 92900 PREVIEW SWITCH	1
13	61911826 PREVIEW SWITCH S.S	1
14	61913026 METERING CHANGE FPC PLATE S.S	2
15	1AA 74900 FRONT COVER LIGHT-PROOF CURTAIN	1
16	61902022 APERTURE INTERLOCK COVER S.S	1
17	1AA 78700 APERTURE INTERLOCK COVER	1
18	66001050 APERTURE INTERLOCK BASE S.S	1
19	1AA AB570 APERTURE INTERLOCK BASE ASS'Y	1
20	1AA 56900 APERTURE P.C BOARD	1
21	1AA 77610 APERTURE INTERLOCK GEAR SHAFT (A)	1
22	1AA AB560 APERTURE INTERLOCK BASE PLATE ASS'Y	1
23	1AA 77710 SPIRAL SPRING	1
24	1AA 77510 APERTURE INTERLOCK GEAR (A)	1
25	66511722 HEXAGON NUT	1
26	61913026 APERTURE CODE ASS'Y S.S	2
27	174 76220 THETA SPRING	1
28	61912522 THETA BASE PLATE ASS'Y S.S	1
29	* THETA BASE PLATE	1
30	61913026 MOUNT LEAF SPRING S.S	6
31	139 81230 MOUNT LEAF SPRING	3
32	139 81301 MOUNT STOPPER	1
33	61913026 MOUNT STOPPER S.S	2
34	131 17700 BODY MOUNT S.S	5
35	66001138 BODY MOUNT S.S	1
36	1AA 75000 BODY MOUNT	1
37	1AA 79000 MOUNT RING	1
38	1AA 75710 APERTURE RING SPRING	1
39	61912522 APERTURE RING PLATE ASS'Y S.S	6
40	63901526 OPEN P. STOP SIGNAL FPC S.S	2
41	1AA 55710 OPEN P. STOP SIGNAL FPC	1
42	* APERTURE RING PLATE	1
43	1AA 77020 OPEN P. STOP SIGNAL LEVER SPRING	1
44	66101225 E RING	1
45	1AA 93600 MIRROR UP KNOB S.S	1
46	1AA 93510 MIRROR UP CLICK SPRING	1
47	61913026 MIRROR UP KNOB ASS'Y S.S	2
48	1AA AB580 MIRROR UP BASE PLATE (B) ASS'Y	1
49	1AA 93730 MIRROR UP KNOB	1
50	1AA 94010 LENS LOCK BUTTON SPRING	1
51	1AA 93910 LENS LOCK BUTTON	1
52	1AA 93810 MIRROR UP CAM	1
53	1AA 78600 LENS LOCK LEVER S.S	1
54	1AA 78410 LENS LOCK LEVER	1
55	1AA 78510 LENS LOCK LEVER SPRING	1
56	1AA 79210 EXPOSURE CHECK BUTTON	1
57	139 31300 RELEASE SPRING	1
58	66101525 E RING	1
59	* MOUNT BASE	1

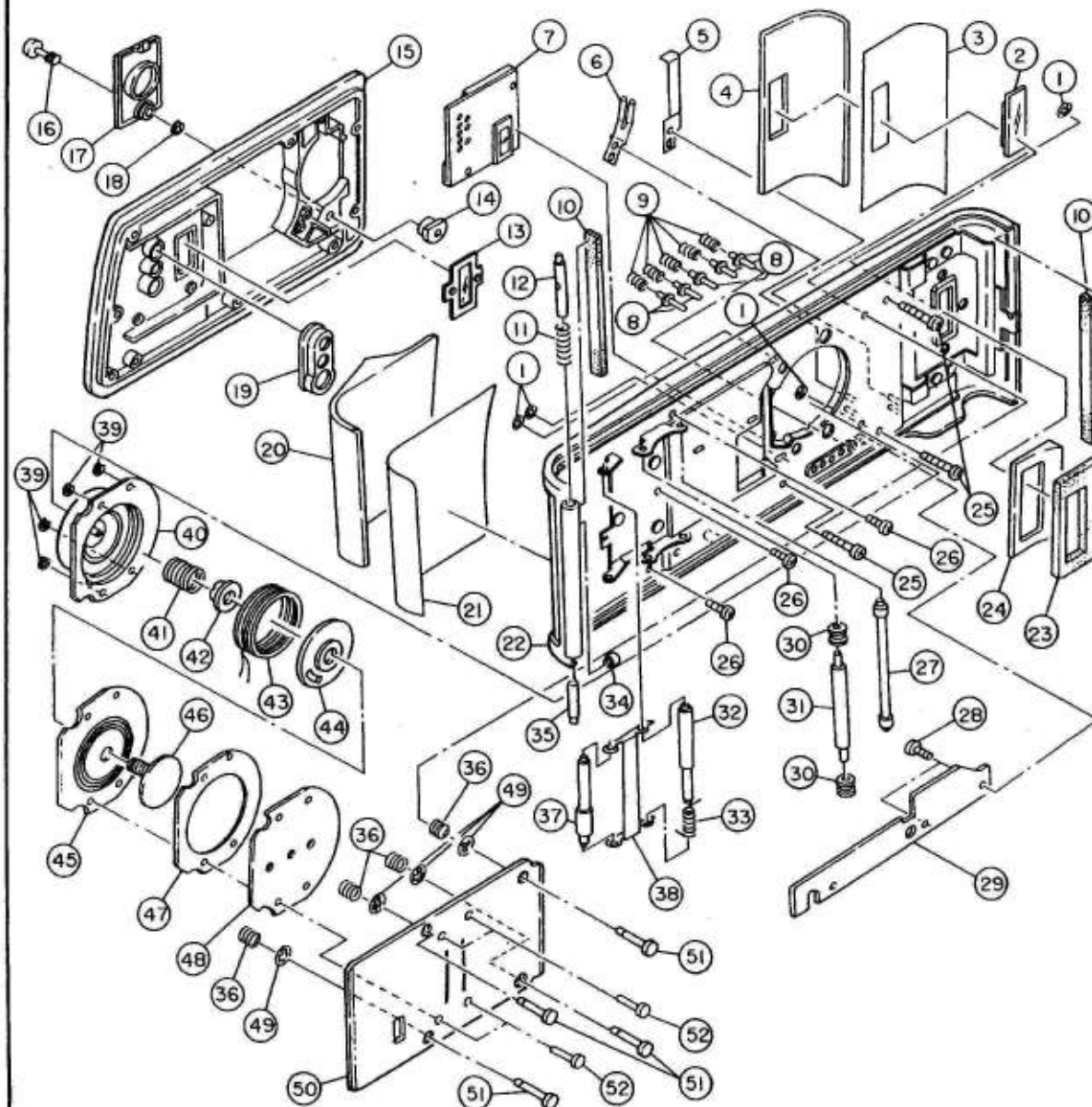
PARTS MARKED \* ARE NOT AVAILABLE



PARTS NO.	DESCRIPTION
11, 52, 53,	1AA AB070 MOUNT BASE ASS'Y (See Page No. 11)
1, 11-14, 17-19, 20-45, 47, 48,	1AA AB000 MIRROR BOX ASS'Y (See Page No. 11)

PARTS NO.	DESCRIPTION	Q'TY
1	1AA AB260 MAIN MIRROR ASS'Y	1
2	1AA 61910 MAIN MIRROR HINGE SHAFT (R)	1
3	1AA AB500 SWING ARM ASS'Y	1
4	1AA 61810 MAIN MIRROR SPRING	1
5	1AA 60310 MAIN MIRROR ADHESIVE TAPE (A)	2
6	* MAIN MIRROR FRAME	1
7	1AA 60100 MAIN MIRROR	1
8	1AA 74600 LIGHT-PROOF CURTAIN	1
9	1AA 74700 LIGHT-PROOF CURTAIN ADHESIVE TAPE	1
10	1AA 74400 SWING ARM CUSHION	1
11	* MOUNT BASE	1
12	1AA 75310 MIRROR CUSHION (R)	1
13	1AA 75210 MIRROR CUSHION (L)	1
14	61911526 SPOT METERING ASS'Y S.S	2
15	1AA 67810 M. NOUETTE	2
16	1AA 67700 MIRROR LIGHT-PROOF NOUETTE	1
17	1AA 67301 SPOT METERING ADJUSTMENT SCREW	2
18	1AA 67400 SPOT METERING ADJUSTMENT PIN	1
19	1AA AB050 SPOT METERING ASS'Y	1
20	1AA 63600 45° SPRING (A)	1
21	1AA 65410 45° SPRING (B)	1
22	1AA 61030 SUB MIRROR SPRING	1
23	1AA 67720 SPRING S.S	2
24	61912026 PPC PROTECTIVE PLATE S.S	1
25	1AA AB250 45° ADJUSTMENT BASE PLATE (B) ASS'Y	1
26	61911826 ARM HINGE ADJUSTMENT BASE PLATE S.S	1
27	1AA AB390 ARM HINGE ADJUSTMENT BASE PLATE ASS'Y	1
28	61912026 MIRROR UP BASE PLATE S.S	2
29	60122112 WASHER	1
30	1AA 65900 PPC PROTECTIVE PLATE	1
31	61923026 PPC PROTECTIVE PLATE S.S	1
32	1AA 74500 ANTI-REFLECTION PLATE (L)	1
33	* MIRROR UP BASE PLATE	1
34	61922026 MIRROR BOX BASE PLATE S.S	2
35	1AA AB270 MIRROR UP ARM ASS'Y	1
36	66101225 E RING	2
37	1AA 72400 MIRROR UP SPRING	1
38	66101225 E RING	2
39	1AA 72500 MIRROR UP ROLLER (R)	1
40	1AA AB280 MIRROR UP LEVER ASS'Y	1
41	61922526 MIRROR UP SWITCH S.S	1
42	1AA 67500 ANTI-REFLECTION PLATE (B)	1
43	1AA 57110 MIRROR UP SWITCH	1
44	1AA 73030 APERTURE LEVER SPRING	1
45	61923026 MIRROR BOX BASE PLATE S.S	1
46	1AA 62720 MIRROR BOX DRESS PLATE (R)	1
47	* MIRROR BOX BASE PLATE	1
48	1AA 67620 ANTI-REFLECTION PLATE (R)	2
49	61912526 APERTURE CONTROL BASE PLATE S.S	1
50	1AA 91410 EXPOSURE CHECK SWITCH TAPE	1
51	1AA 91211 EXPOSURE CHECK SWITCH	1
52	61912026 APERTURE LEVER RETAINING PLATE S.S	1
53	1AA 79600 APERTURE LEVER RETAINING PLATE	1
54	* DOUBLE STICK TAPE	1
55	* APERTURE CONTROL BASE PLATE	1
50, 51, 54, 55,		
1AA AB010	APERTURE CONTROL BASE PLATE ASS'Y	1

PARTS MARKED \* ARE NOT AVAILABLE



PARTS NO.	DESCRIPTION	Q'TY
1 66101225	E RING	4
2 174 16610	FILM CHECK WINDOW	1
3 1AA 68500	BACK COVER (L) TAPE	1
4 1AA 18210	BACK COVER RUBBER (L)	1
5 384 15840	D. BATTERY CONTACT (+)	1
6 384 15930	D. BATTERY CONTACT (-)	1
7 1AA 55000	DATE MODULE	1
8 1AA 14920	BACK COVER CONTACT PIN	5
9 1AA 15000	BACK COVER CONTACT SPRING	5
10 174 17300	LOCK CLAW MOQUETTE	2
11 174 17700	HINGE SHAFT SPRING	1
12 131 13100	HINGE SHAFT (2)	1
13 384 15200	DATE WINDOW	1
14 1AA 89200	BATTERY CAP SCREW SOCKET	1
15 1AA 16010	BACK COVERING	1
16 1AA 89100	BATTERY CAP SCREW	1
17 1AA 89010	BATTERY CAP	1
18 66102024	E RING	1
19 384 15410	MODE BUTTON	1
20 1AA 18110	BACK COVER RUBBER (R)	1
21 1AA 68400	BACK COVER (R) TAPE	1
22 1AA AC250	BACK COVER SUBASSEMBLY	1
23 1AA 68800	FILM CARTRIDGE MOQUETTE	1
24 1AA 68710	MOQUETTE BASE	1
25 69116076	BACK COVERING S.S	3
26 69113586	BACK COVERING S.S	3
27 1AA 16300	BACK COVER ROLLER (1)	1
28 69113576	VACUUM P.C BOARD S.S	2
29 1AA AE600	VACUUM P.C BOARD ASS'Y	1
30 1AA 16500	BACK COVER ROLLER (2) COLLAR	2
31 1AA 16400	BACK COVER ROLLER (2)	1
32 1AA 16610	BACK COVER FILM HOLD SHAFT	1
33 1AA 16920	BACK COVER FILM HOLD SHAFT SPRING	1
34 1AA 69600	HINGE SHAFT STOPPER	1
35 131 13000	HINGE SHAFT (1)	1
36 1AA 15410	PRESSURE PLATE SPRING	4
37 1AA 16810	BACK COVER FILM HOLD ROLLER	1
38 1AA 16720	BACK COVER FILM HOLD PLATE	1
39 ---	E RING	4
40 ---	VACUUM CASE	1
41 ---	VACUUM DRIVE PLATE SPRING	1
42 ---	VACUUM DRIVE PLATE (2)	1
43 ---	VACUUM COIL	1
44 ---	VACUUM COIL HOLDER	1
45 ---	VACUUM RUBBER	2
46 ---	VACUUM DRIVE PLATE (1)	1
47 ---	VACUUM BASE	1
48 ---	VACUUM BASE (P)	1
49 ---	CS CIR-CLIP	4
50 ---	PRESSURE PLATE	1
51 ---	PRESSURE PLATE SHAFT	4
52 ---	VACUUM CASE PIN	4

## NOTE:

Assemble the parts in order of 39-52.

39-52,		
1AA AA360	VACUUM UNIT ASS'Y	1
1-52,		
1AA AA100	BACK COVER ASS'Y	1