

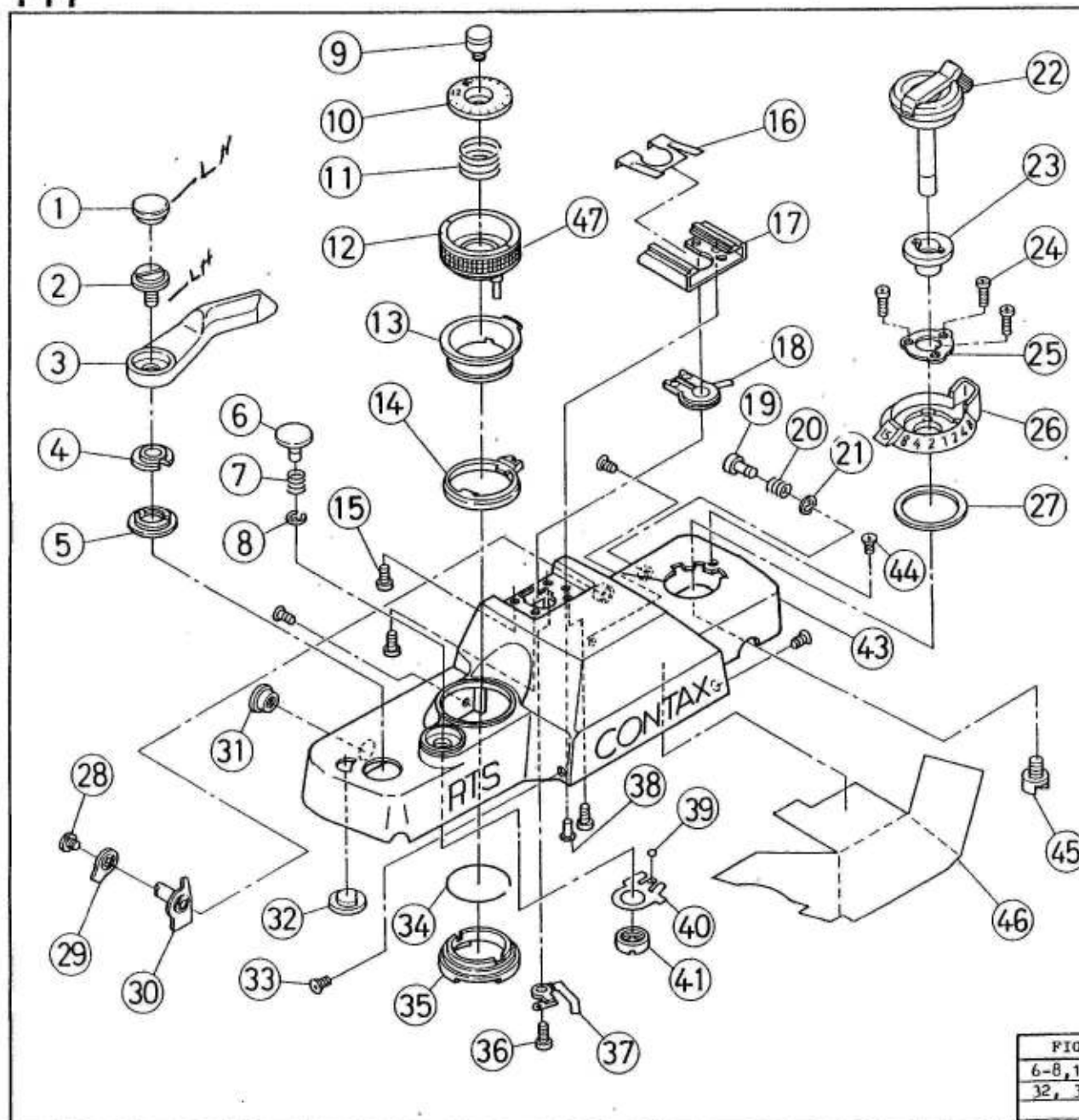
# CONTAX

## RTS II QUARTZ

### ASSEMBLING CHART



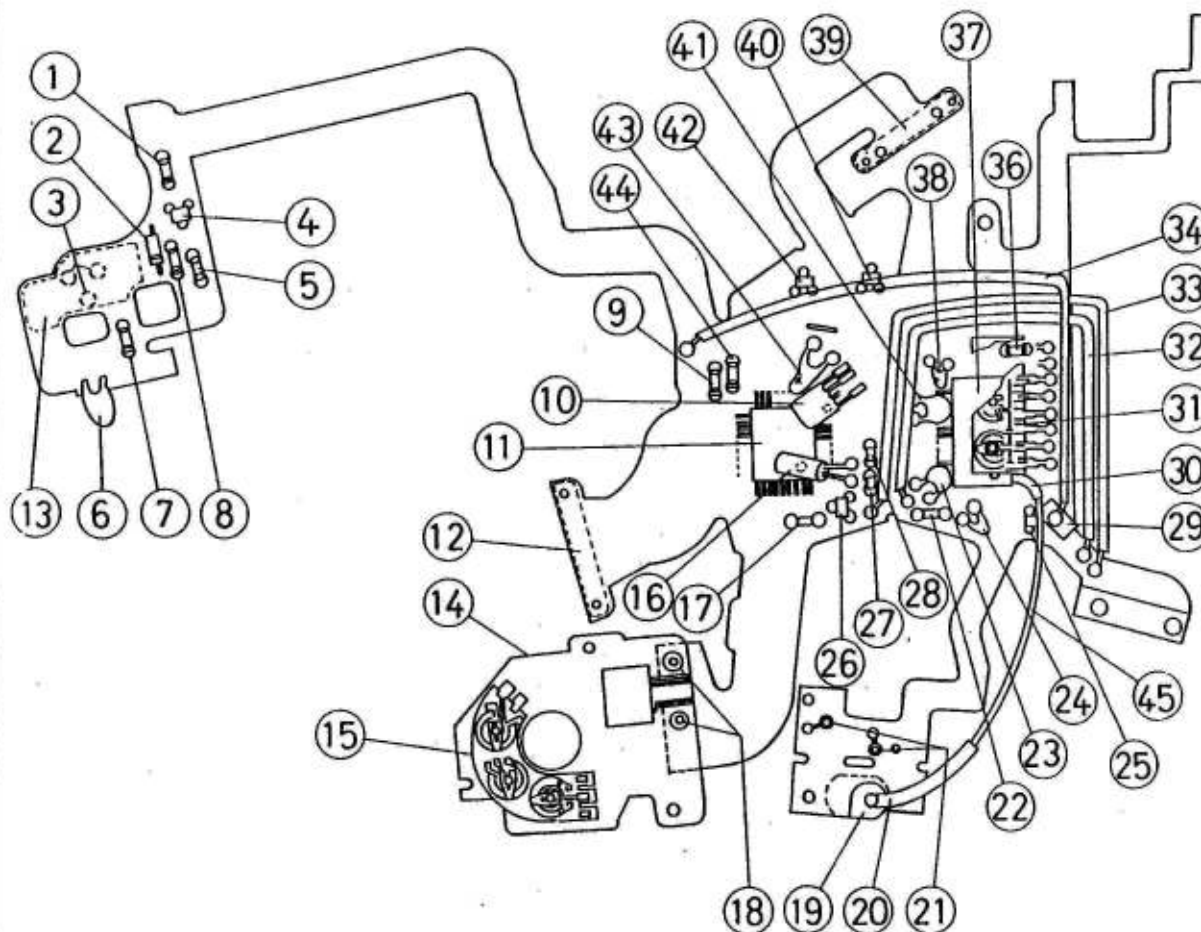
**YASHICA CO., LTD.**  
T O K Y O J A P A N



PARTS NO.	DESCRIPTION	Q'ty
1 141 273	Winding Lever Dress Screw	1
2 141 272	Winding Lever S.S.	1
3 141 270	Winding Lever	1
4 141 271	Winding Lever Base	1
5 141 274	Top Cover Nut	1
6 141 182	Release Button	1
7 141 183	Release Spring	1
8 66102025	E - Ring	1
9 141 266	ASA Name Plate Dress Screw	1
10 141 263	ASA Name Plate	1
11 141 264	ASA Dial Spring	1
12 071 260	ASA Dial Ass'y	1
13 141 171	Correction Indicator Needle	1
14 141 170	Main SW Lever	1
15 63911822	Accessory Shoe S.S.	3
16 139 178	Shoe Dress Plate	1
17 141 161	Accessory Shoe	1
18 071 162	Shoe Contact Ass'y	1
19 141 167	S. Lock Button	1
20 139 192	S. Lock Button Sp.	1
21 66101225	E. Ring	1
22 071 251	Rewind Knob Ass'y (See Page #10)	1
23 131 676	Rewind Shaft Holder Nut	1
24 61914026	Shutter Dial S.S.	3
25 131 200	Shutter Dial Holder	1
26 141 250	Shutter Dial	1
27 131 181	Shutter Dial Moquette	1
28 141 178	ES. Driving Lever S.S.	1
29 141 174	ES. Driving Lever	1
30 071 177	ES. Driving Cam Ass'y	1
31 139 164	Release Socket Dress Ring	1
32 131 162	Counter Window	1
33 131 391	Top Cover S.S.	1
34 141 172	Correction Indicator M. Stopper	1
35 141 169	M. SW Click Ring	1
36 63912526	Shoe Contact Plate (1) S.S.	1
37 139 174	Shoe Contact Plate (1) Ass'y	1
38 141 165	Shoe Contact Plate Pin	1
39 66701220	Steel Ball	1
40 141 184	M. SW Click Plate	1
41 141 185	Click Plate Nut	1
43 ★	Top Cover	1
44 61811822	Top Cover S.S.	1
45 131 658	Rewind Shaft	1
46 141 173	Top Cover Insulation Sheet	1
47 141 261	Dial Cover	1

FIG. NO.	PARTS NO.	DESCRIPTION
6-8, 13-21, 28-30, 32, 34-43, 46.	071 160	Top Cover Ass'y

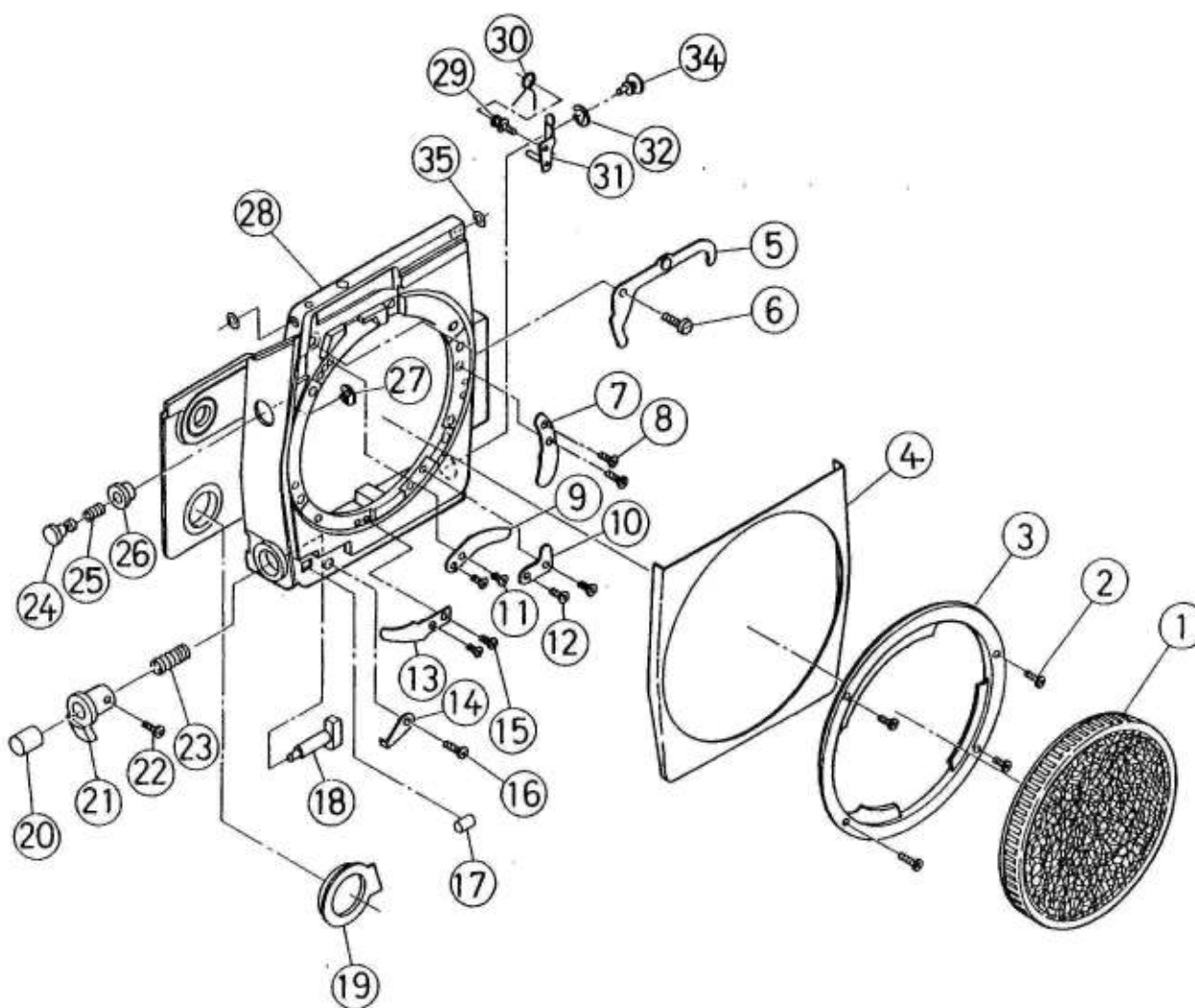
NOTE : (Parts with marked "★" are not available)



PARTS NO.	DESCRIPTION	Q'TY
1 141 528	Resistor	1
2 141 535	Diode	1
3 141 581	Terminal Contact	3
4 152 510	Transistor	1
5 152 534	Resistor	1
6 141 533	Capacitor	1
7 152 534	Resistor	1
8 141 525	Resistor	1
9 141 526	Resistor	1
10 141 503	Safety Volt-age I C	1
11 ★	Digital IC	1
12 141 550	Time LED Supporting Base	1
13 141 554	MD Supporting Base	1
14 141 512	Time Cord Base	1
15 141 519	Variable Resistor A	1
16 137 506	Crystal Plate	1
17 152 534	Resistor	1
18 141 574	TC Base Connector Pin	1
19 141 521	SPD - 1	1
20 141 529	Insulation Tube (2)	1
21 141 580	Shoe Terminal Sp.	1
22 152 535	Resistor	1
23 139 523	Capacitor	1
24 137 536	Capacitor	1
25 139 506	Capacitor	1
26 152 510	Mini Transistor	1
27 137 527	Capacitor	1
28 137 527	Capacitor	1
29 —	Insulation Tape	1
30 141 524	Insulation Tube (1)	1
31 141 518	Variable Resistor A	1
32 67803090	Cord (Orange)	1
33 67804090	Cord (Yellow)	1
34 67807090	Cord (Purple)	1
36 137 525	Capacitor	1
37 141 501	Analog IC	1
38 345 515	Capacitor	1
39 141 553	Information Supporting Base	1
40 152 510	Mini Transistor	1
41 139 521	Capacitor	1
42 152 525	Mini Transistor	1
43 141 532	Capacitor	1
44 141 526	Resistor	1
45 67726030	Cord (Blue)	1

FIG. NO.	PARTS NO.	DESCRIPTION
1 - 45	071 505	Amplifier Ass'y (See Page No. 4, 10)

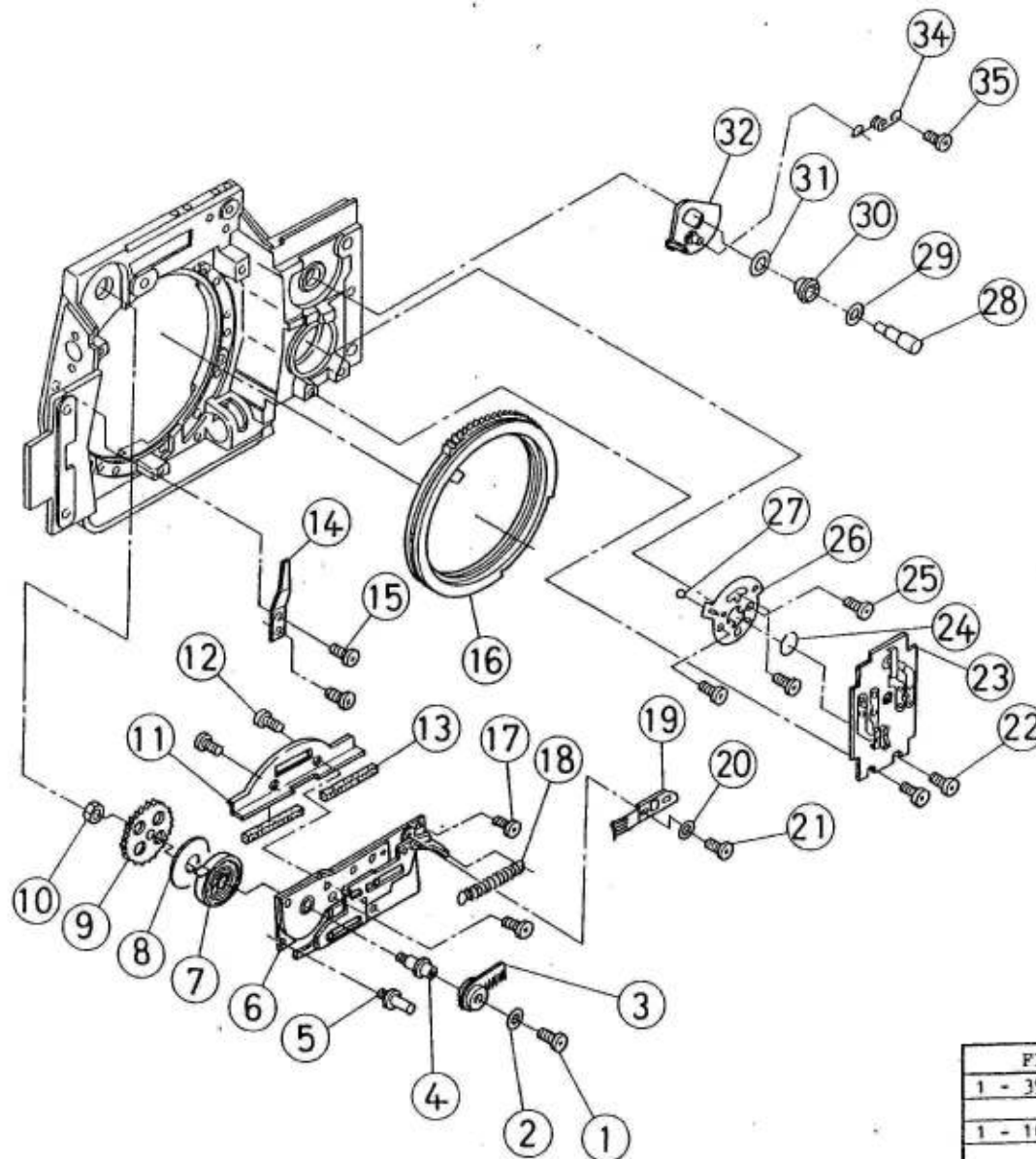
NOTE : (Parts with marked " ★ " are not available)



	PARTS NO.	DESCRIPTION	Q'TY
1	128 118	Body Cap	1
2	131 177	Body Mount S.S.	1
3	142 810	Body Mount	1
4	141 899	Front Cover	1
5	141 854	Lock Lever	1
6	141 856	Lock Lever Shaft	1
7	139 812	Mount Spring	1
8	61913026	Mount Spring S.S.	2
9	139 812	Mount Spring	1
10	139 813	Mount Stopper	1
11	61913026	Mount Spring S.S.	2
12	61913026	Mount Stopper S.S.	2
13	139 812	Mount Spring	1
14	141 876	Mechan. Change Click Spring SS	1
15	61913026	Mount Spring S.S.	2
16	63913022	Mechan. Change Click Spring SS	1
17	141 877	Mechan. Change Click Roller	1
18	141 873	Diaphragm Button Shaft	1
19	141 829	Self Indicator	1
20	141 871	Diaphragm Button	1
21	141 872	Mechan. Change Lever	1
22	141 874	Mechan. Change Lever Stopper	1
23	141 875	Diaphragm Button Spring	1
24	141 859	Lens Lock Button	1
25	141 861	Lens Lock Button Spring	1
26	141 860	Lens Lock Button Holder	1
27	66101225	E - 12	1
28	★	Mount Base	1
29	141 866	B. Lever (1) Shaft	1
30	141 867	B. Lever Spring	1
31	071 801	B. Lever Ass'y	1
32	141 868	E - Ring	1
34	141 864	B. Socket	1
35	60121810	Mount Base Washer	2

FIG. NO.	PARTS NO.	DESCRIPTION
2 - 35	071 801	Mount Base Ass'y (See Page No. 4, 5)

NOTE : (Parts with marked "★" are not available)

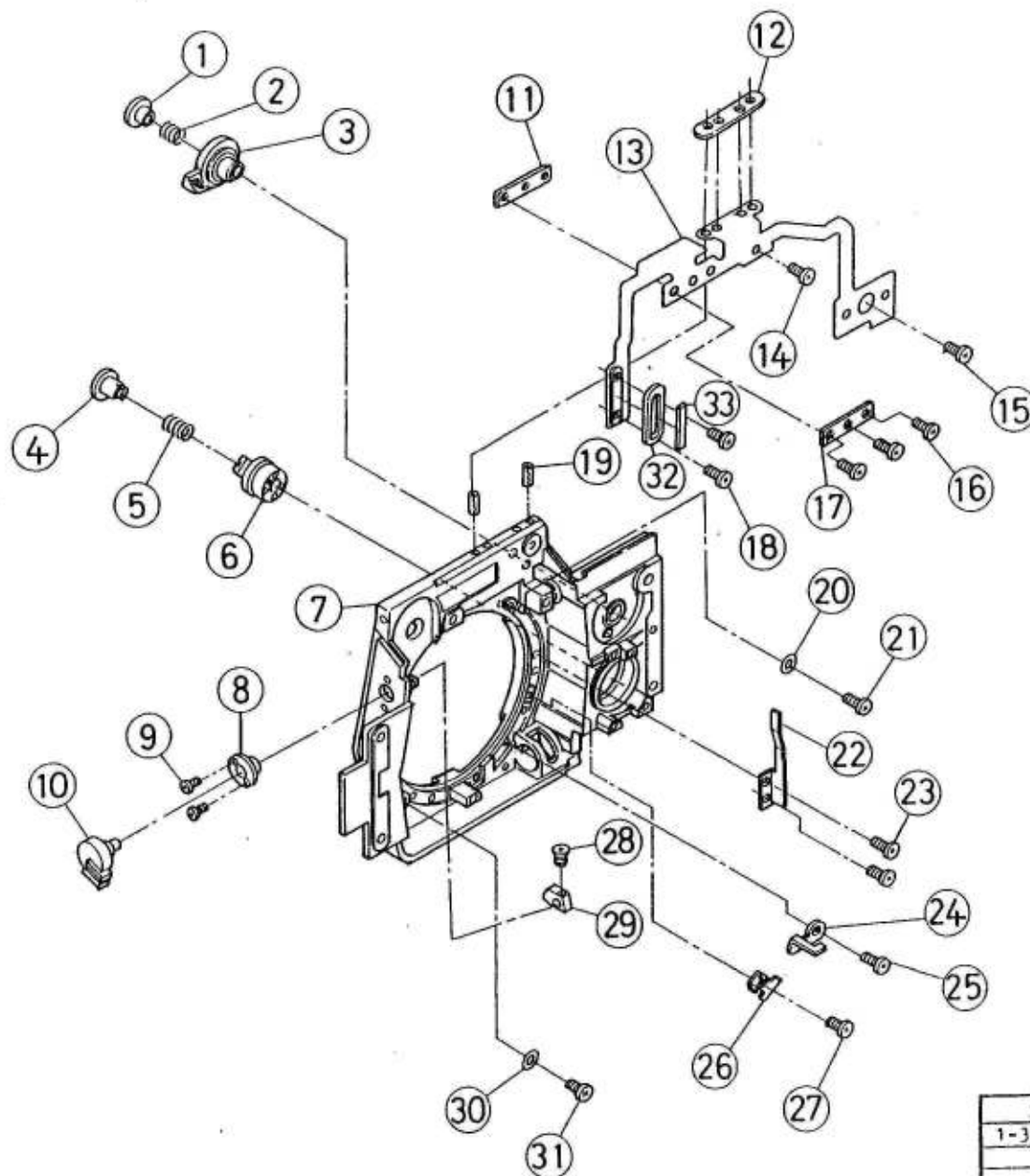


PARTS NO.	DESCRIPTION	Q'TY
1 66001050	Aperture Switch SS	1
2 60321510	Aperture Switch Washer	1
3 071 819	Aperture Switch Ass'y	1
4 141 814	F.Stop Resistor Gear Ass'y	1
5 141 822	FPC Fixer S.S.	1
6 ★	Aperture Cord Base Ass'y	1
7 141 812	Winding Spring	1
8 60414610	Winding Spring Washer	1
9 141 813	F. Stop Resistor Gear	1
10 66511722	Six Angle Nut M 1.7	1
11 141 788	Mirror Box Dress Plate(Upper)	1
12 61801829	Mirror Box Dress Plate S.S.	2
13 141 789	Mirror Cushion	2
14 141 883	Mirror Up Spring	1
15 63902526	Mirror Up Spring S.S.	2
16 141 815	P. Stop Ring	1
17 63913022	Information Cord Plate S.S.	1
18 141 811	Release Signal Spring	1
19 141 810	Release Signal Switch	1
20 60321510	Release Signal Switch Washer	1
21 66001050	Release Signal Switch S.S.	1
22 63912522	Checker Base S.S.	2
23 071 513	Checker Switch Base Ass'y	1
24 141 833	Self Timer Button Stopper	1
25 61902526	Self Timer Click Plate S.S.	2
26 141 832	Self Timer Click Plate	1
27 66701620	Steel Ball Ø 1.6	1
28 141 845	EC Button Shaft	1
29 60112110	EC Button Shaft Washer	1
30 139 217	EC Button Holder	1
31 141 838	EC Button Holder Washer	1
32 071 843	EL Click Plate Ass'y	1
34 141 852	EL Click Spring	1
35 141 853	EL Click Spring Shaft	1

FIG. NO.	PARTS NO.	DESCRIPTION
1 - 35	071 801	Mount Base Ass'y
		(See Page No. 3, 5)
1 - 10, 17 - 21	071 803	Aperture Cord Base Plate Assy

NOTE : (Parts with marked "★" are not available)

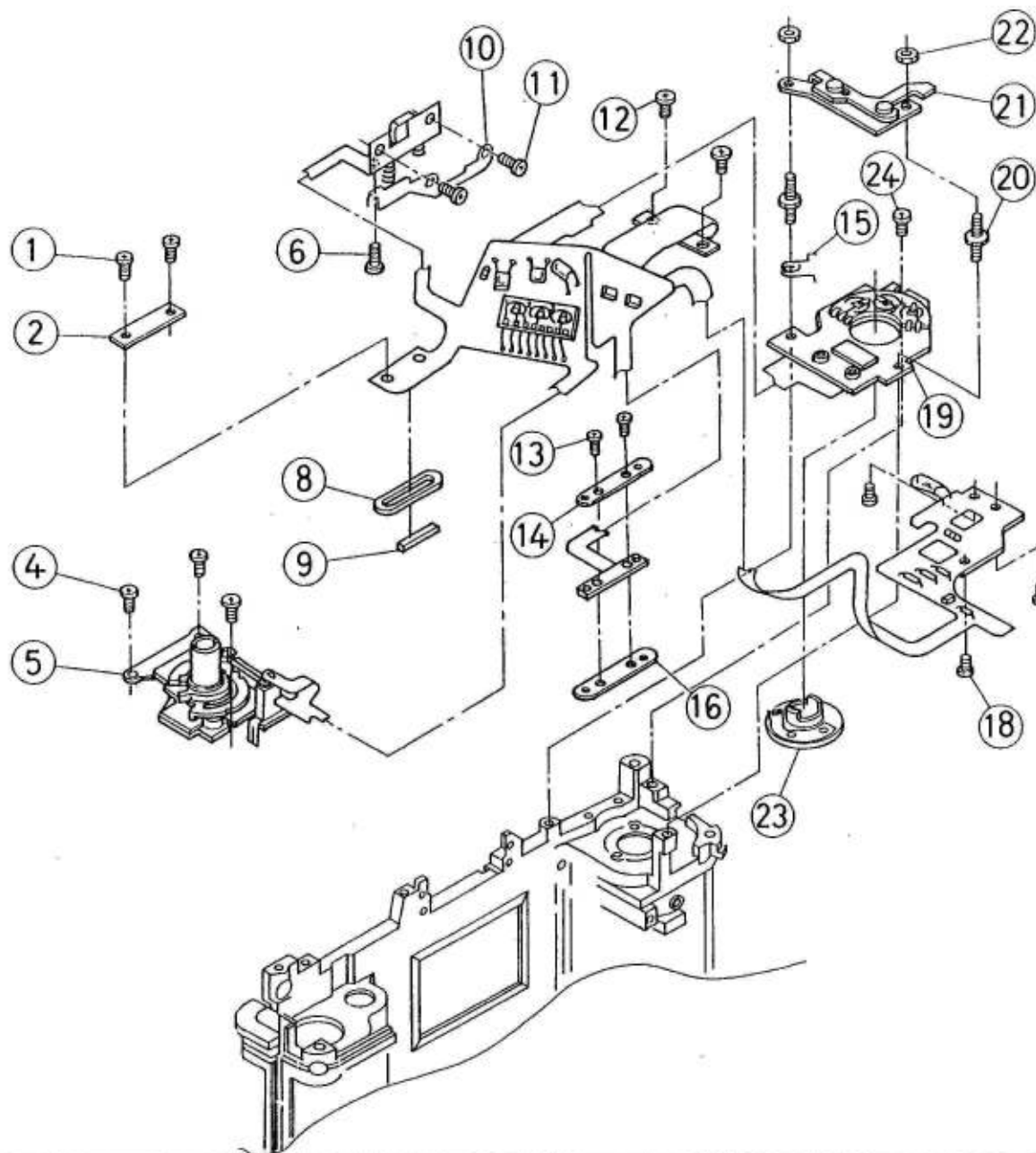




	PARTS NO.	DESCRIPTION	Q'T
1	141 844	EC Button	1
2	141 846	EC Button Spring	1
3	071 839	EL Lever Ass'y	1
4	141 827	Self-timer Button	1
5	141 831	Self-timer Button Spring	1
6	141 828	Self-timer Lever	1
7	★	Mount Base	1
8	141 881	Mirror-up Knob Holder	1
9	61902226	Mirror-up Knob Holder SS	2
10	141 880	Mirror-up Knob	1
11	141 543	Information Cord Connector	1
12	141 544	Cord PPC Connector	1
13	141 507	Cord PPC	1
14	66001050	Release Signal Switch S.S.	1
15	63912522	Checker Plate S.S.	1
16	66001050	Cord PPC Fixer S.S.	3
17	141 570	Cord PPC Fixer	1
18	63913022	Information Cord Base S.S.	2
19	66662230	Spring Pin	2
20	60451812	Aperture Ring Washer	1
21	63912522	Aperture Ring S.S.	1
22	141 861	Lens Lock Spring	1
23	63902526	Lens Lock Spring SS	2
24	141 878	Mechan. Lever Stopper	1
25	63913022	Mechan. Lever Stopper S.S.	1
26	141 817	Aperture Ring Stopper	1
27	63912522	Aperture Ring S.S.	1
28	61903026	Mirror-up Cam S.S.	1
29	141 882	Mirror-up Cam	1
30	60451812	Aperture Ring Washer	1
31	63912522	Aperture Ring S.S.	1
32	141 575	T.C. Connector Guide	1
33	141 542	T.C. Connector	1

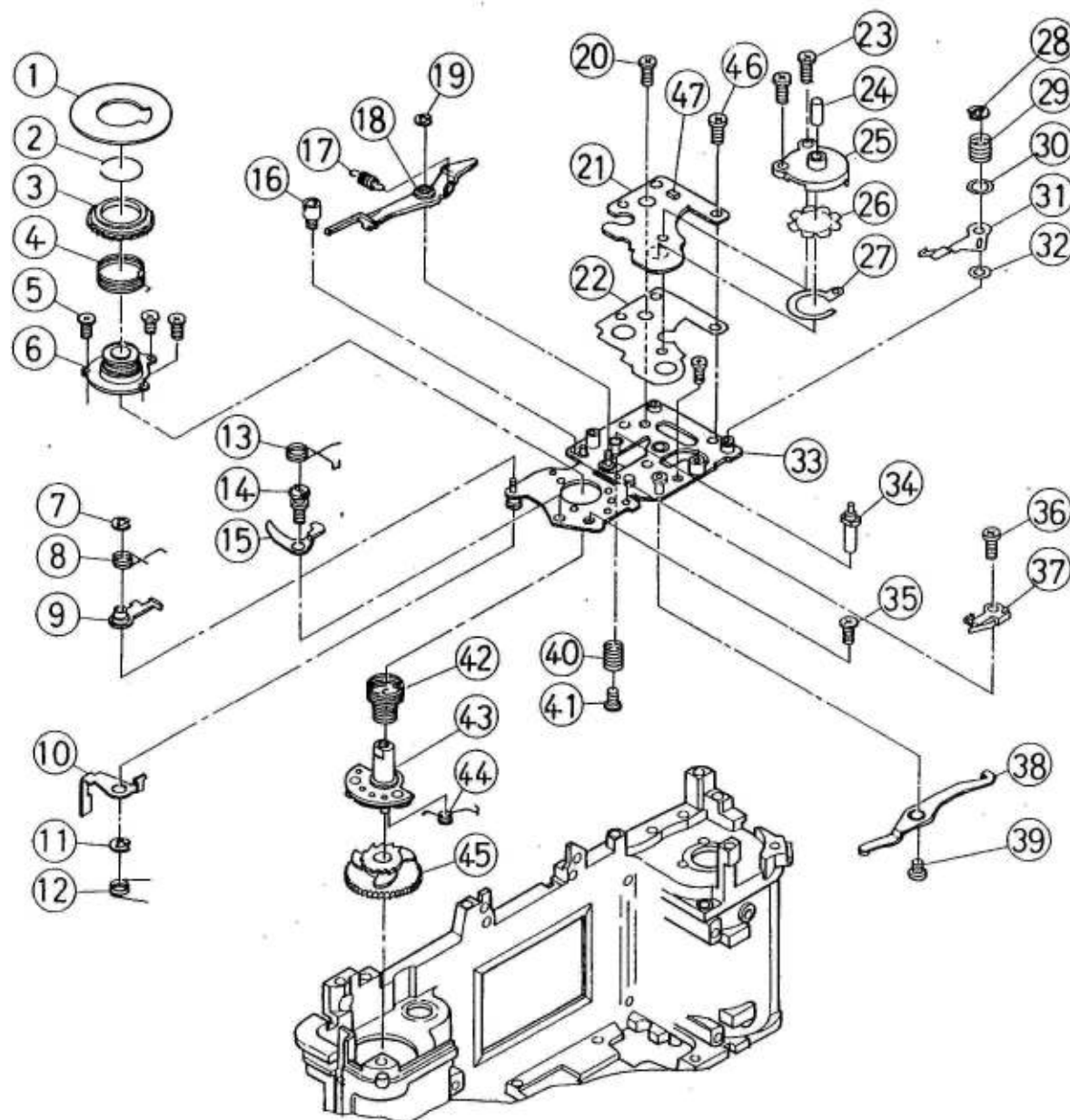
FIG.NO.	PARTS NO.	DESCRIPTION
1-3, 7-10, 20-31	071 801	Mount Base Ass'y (See Page No. 3, 4)

NOTE : (Parts with marked "★" are not available)



PARTS NO.	DESCRIPTION	Q'TY
1 63902526	Release Connector Fixer S.S.	2
2 141 583	Release Connector Fixer	1
4 131 905	Winding Base Plate (Upper) SS	2
5 ★	ASA Resistor Ass'y	
-	(See Page No. 18)	1
6 63902526	Main P.P.C. S.S.	1
8 141 576	Release Connector Guide	1
9 141 541	Release Connector	1
10 141 579	SPD Cord Fixer	1
11 63912022	SPD S.S.	2
12 63902526	LED Connector S.S.	2
13 63902526	Information Connector Fixer SS	2
14 141 584	Information Connector Fixer	1
15 141 243	Release Plate Spring	1
16 141 544	Cord FPC Connector	1
18 63912022	Main P.P.C. S.S.	3
19	Amplifier Assy(See Page#2,10)	1
20 141 239	Release Plate Holder Shaft	2
21 071 240	S. Lock Release Plate Ass'y	1
22 66511722	S. Lock Release Nut	2
23 071 230	S. Contact Base Plate Ass'y	1
24 63913022	Time Cord Base S.S.	1

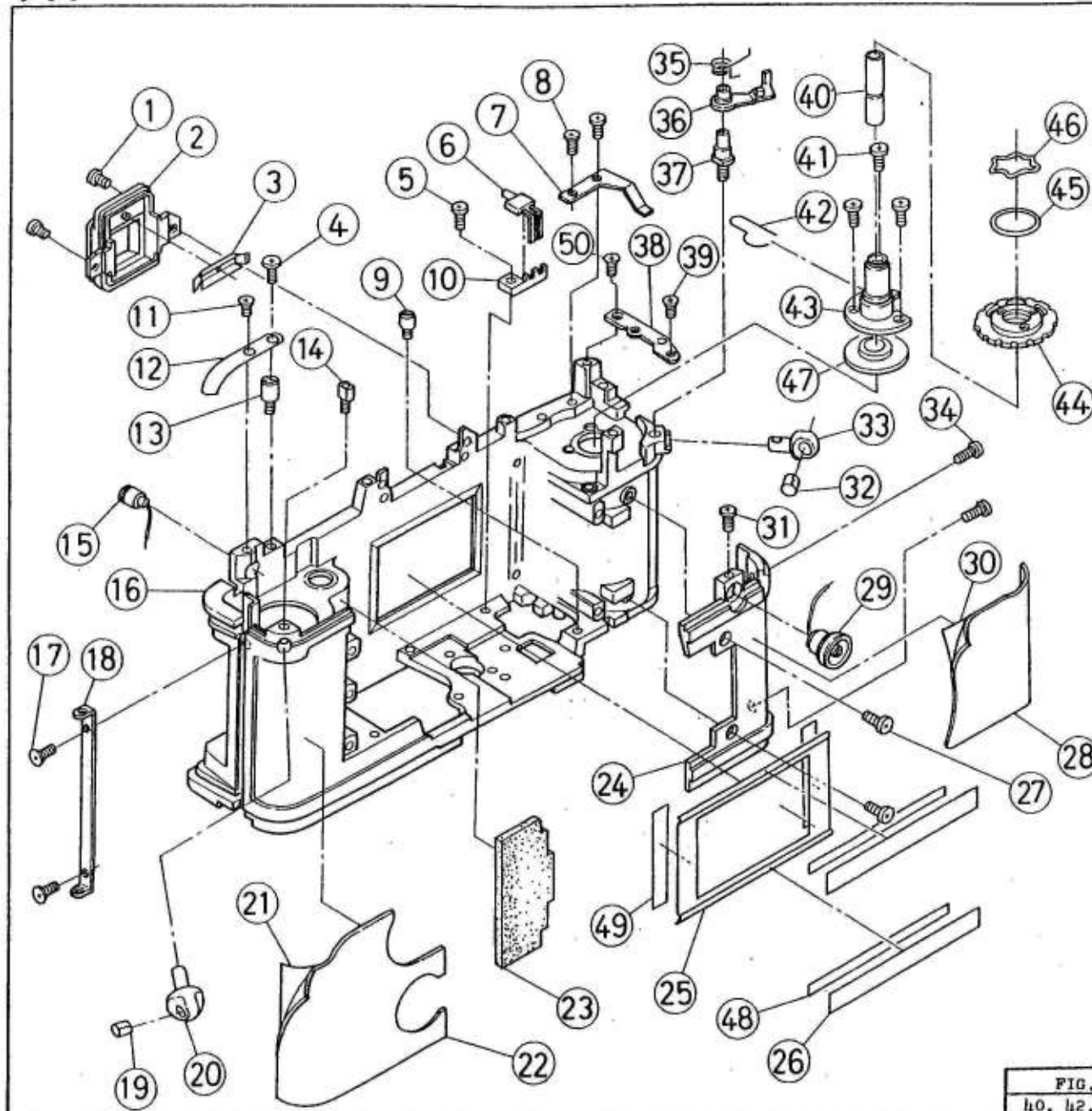
NOTE : (Parts with marked "★" are not available)



	PARTS NO.	DESCRIPTION	Q'TY
1	141 640	Counter Name Plate	1
2	131 895	Counter Gear Fixer	1
3	141 638	C. Ratchet	1
4	141 639	C. Sp.	1
5	61811822	Winding Shaft Holder S.S.	3
6	141 602	Winding Shaft Holder	1
7	66101225	E-12	1
8	141 632	C. Stop Claw Spring	1
9	071 630	C. Stop Claw Ass'y	1
10	141 634	C. Release Lever	1
11	66102025	E-20	1
12	141 636	C. Release Lever Spring	1
13	141 644	C. SW Sliding Lever Sp.	1
14	141 643	C. SW Sliding Lever Shaft	1
15	141 642	C. SW Sliding Lever	1
16	141 648	C. Indicator Shaft	1
17	224 312	C. Claw Spring	1
18	071 625	C. Feeding Claw Ass'y	1
19	66101225	E-12	1
20	63912522	Winding Base Plate Ass'y S.S.	1
21	141 514	Release Base	1
22	141 660	Release Base Sit	1
23	63904026	Release SW Case S.S.	2
24	141 275	Release Shaft	1
-	141 276	Release Shaft(L) } Select	1
-	141 277	Release Shaft(S) }	1
25	141 658	Release SW Case	1
26	141 661	P.S. SW	1
27	141 659	Release Washer	1
28	66101525	E-15	1
29	141 655	T-SW-Spring	1
30	60322110	T-SW-Washer	1
31	141 060	T-SW	1
32	131 396	First Curtain Sp. Drum W.	1
33	071 601	Winding Base Plate Ass'y	1
34	141 620	C. Feeding Claw Release Shaft	1
35	61812522	Shutter Ass'y S.S.	1
36	63903026	C-SW S.S.	1
37	141 641	C-SW	1
38	071 612	Charge Lever (1) Ass'y	1
39	66001031	Charge Lever (1) Ass'y S.S.	1
40	141 621	C. Feeding Claw Release Sp.	1
41	66001042	C. Feeding Claw Release Shaft	SS 1
42	131 617	Winding Shaft Sp.	1
43	071 605	Winding Ass'y	1
44	141 608	Ratchet Spring	1
45	141 030	A. Gear Ass'y	1
46	63902022	Release Base Plate S.S.	1
47	137 526	Capacitor	1

NOTE : (Parts with marked "★" are not available)

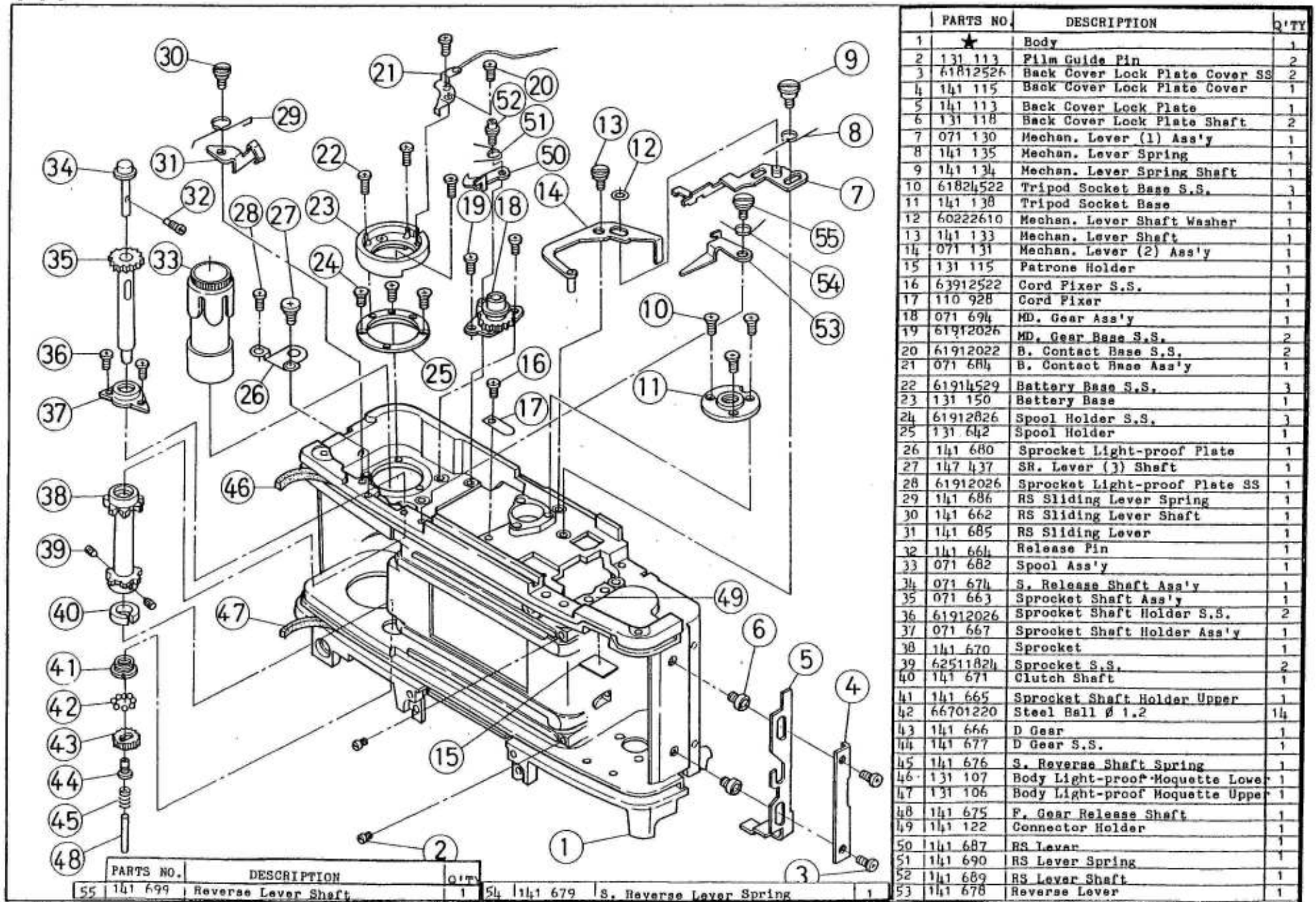




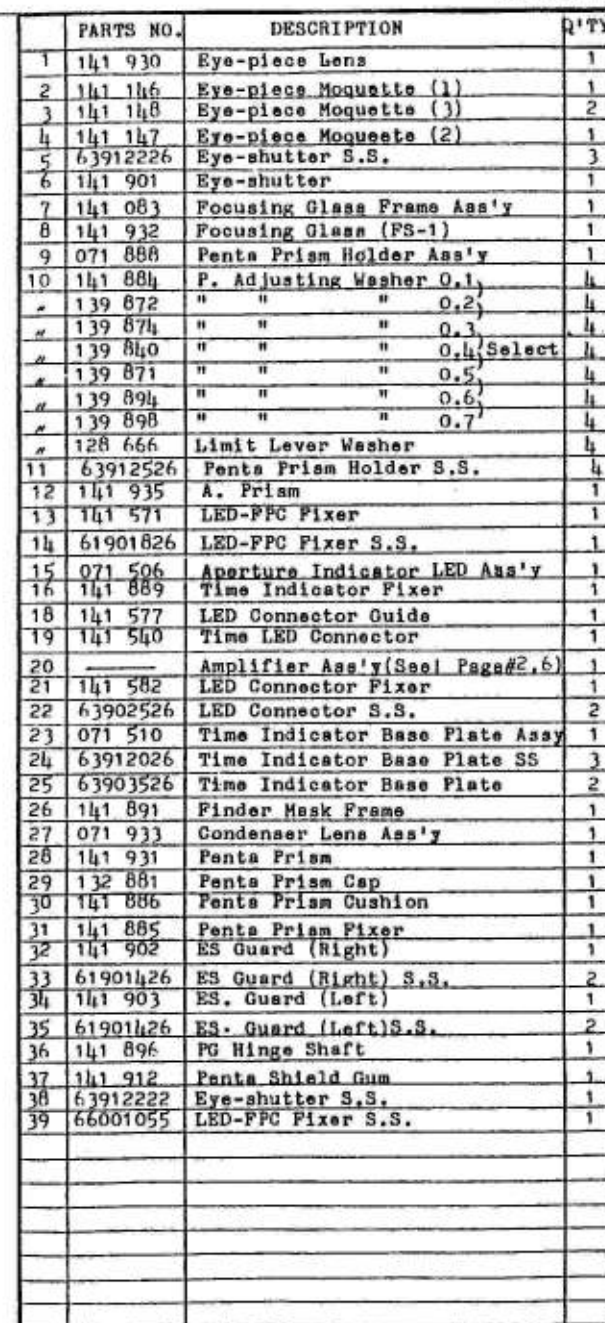
PARTS NO.	DESCRIPTION	Q'TY
1 61914026	Eye-piece Frame S.S.	2
2 141 145	Eye-piece Frame	1
3 141 578	SPD Shield Plate	1
4 63912522	Counter Indicator S.S.	1
5 63913526	D-LED Holder S.S.	1
6 141 523	Data Back LED	1
7 141 114	Lock Plate Spring	1
8 63912526	Lock Plate Spring S.S.	2
9 141 120	Lower Base Plate Fixer	1
10 141 121	D-LED Holder	1
11 141 139	R. Socket S.S.	1
12 141 649	Counter Indicator	1
13 141 648	Counter Indicator Shaft	1
14 141 125	Strap Holder S.S. (Left)	1
15 065 h62	R. Socket Ass'y	1
16 ★	Body	1
17 61812522	Hinge Shaft Holder S.S.	2
18 141 116	Hinge Shaft Holder	1
19 131 122	Reinforcement Ring	1
20 141 126	Strap Holder (2)	1
21 141 103	Leather Supporting Plate (Left)	1
22 141 105	Front Leather (Left)	1
23 141 189	Self Light-proof Moquette	1
24 141 140	Body Cover	1
25 141 106	Body Light-proof Plate	1
26 131 696	Mirror Box Light-proof Plate (2)	2
27 63912527	Body Cover S.S.	2
28 141 104	Front Leather (Right)	1
29 065 128	Synchro Socket Ass'y	1
30 141 102	Leather Supporting Plate (Right)	1
31 63912522	Synchro Socket S.S.	1
32 131 122	Reinforcement Ring	1
33 131 109	Strap Holder (1)	1
34 63913526	Body Cover S.S.	2
35 141 236	S. Click Spring	1
36 071 235	S. Click Lever Ass'y	1
37 141 124	Strap Holder S.S. (Right)	1
38 141 237	Top Cover Stopper	1
39 61813022	Top Cover Stopper S.S.	1
40 141 112	Rewind Shaft Guide	1
41 63923026	Rewind Shaft Holder S.S.	3
42 141 117	Rewind Shaft Spring	1
43 141 110	Rewind Shaft Holder	1
44 071 233	S. Click Plate Ass'y	1
45 131 687	Rewind Knob Adjusting Washer	1
46 131 677	Rewind Knob Washer	1
47 141 111	Light-proof Ring	1
48 131 698	Tape (2)	2
49 141 118	Body Light-proof Plate Tape	2
50 61801826	Top Cover Stopper S.S.	1

FIG. NO.	PARTS NO.	DESCRIPTION
40, 42, 43	071 110	Rewind Shaft Holder Ass'y

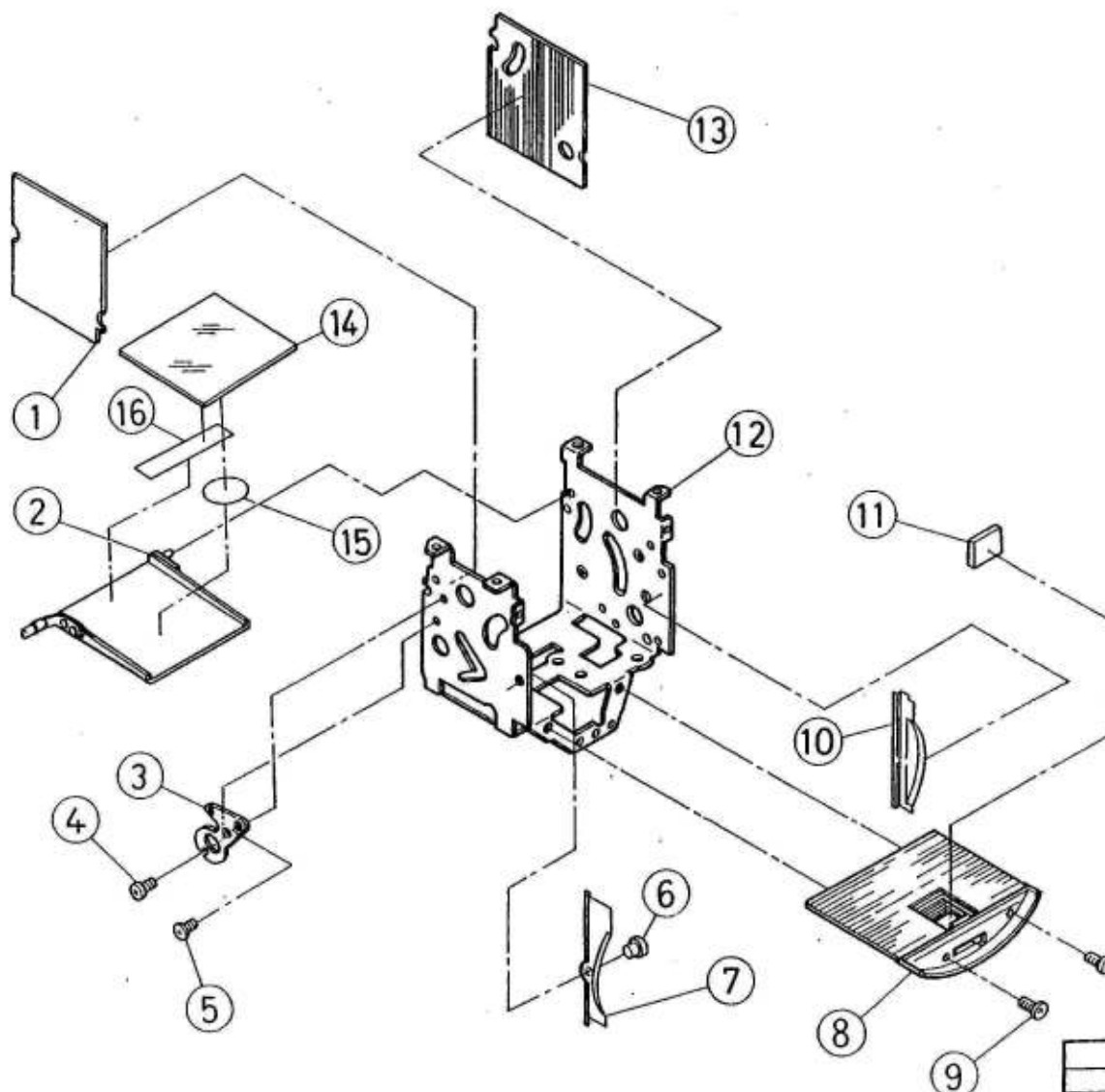
NOTE : (Parts with marked "★" are not available)



NOTE : (Parts with marked "★" are not available)



NOTE : (Parts with marked " ★ " are not available)

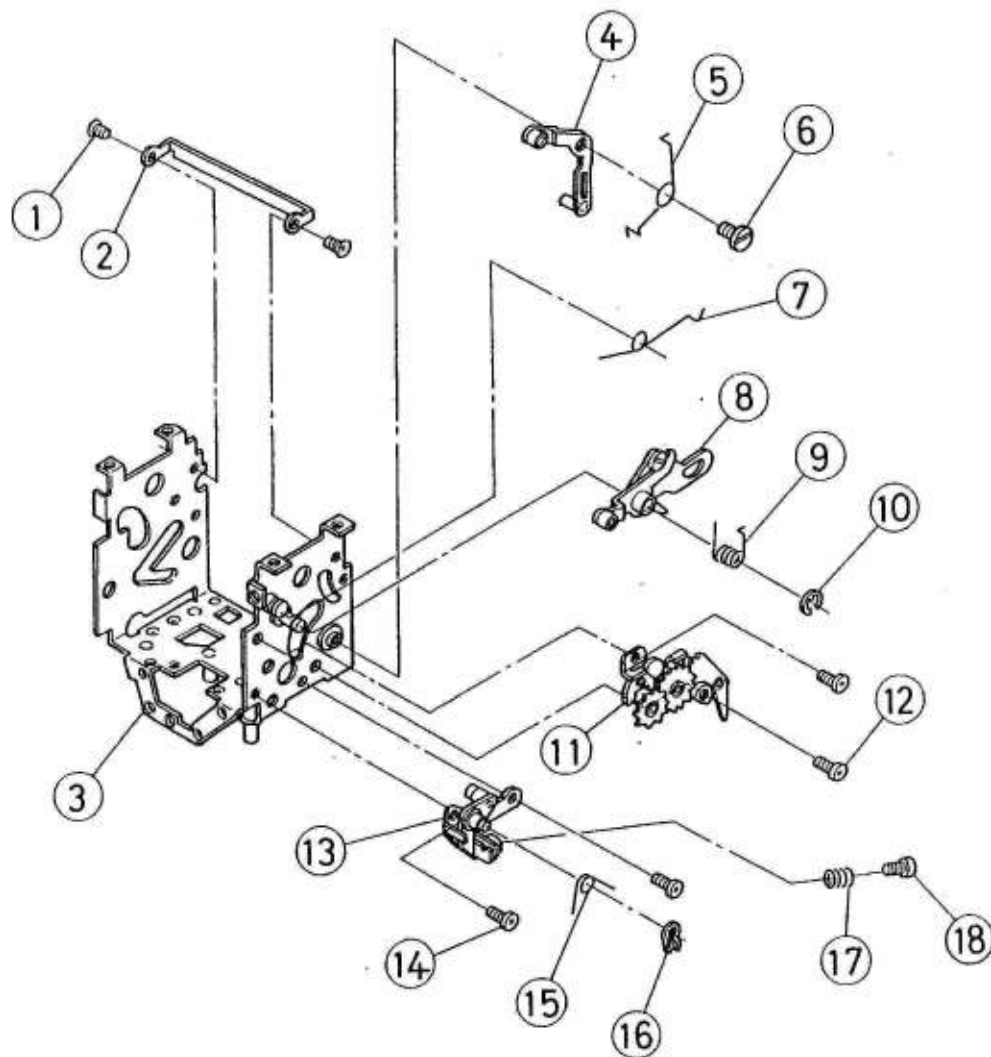


	PARTS NO.	DESCRIPTION	Q'TY
1	141 781	Mirror Box Light-proof Plate(L	1
2	071 770	Mirror Frame Sub Ass'y	1
3	141 778	Mirror Hinge	1
4	61911526	Mirror Hinge S.S.	1
5	61811826	Mirror Hinge S.S.	1
6	141 785	Tr. Adjusting Cap	1
7	141 787	Mirror Box Dress Plate (Left)	1
8	141 782	M. Box Light-proof Plate(Lower	1
9	61901828	M.B.Light-proof Plate(Lower)SS	2
10	141 786	Mirror Box Dress Plate(Right)	1
11	139 738	SPD Mirror	1
12	★	Mirror Box	1
13	141 780	M. Box Light-proof Plate(Right	1
14	141 934	Mirror	1
15	141 791	Mirror Tape (1)	1
16	141 792	Mirror Tape (2)	2

FIG. NO.	PARTS NO	DESCRIPTION
1 - 16	071 701	Mirror Box Ass'y
		(See Page No. 12, 13)

NOTE : (Parts with marked "★" are not available)



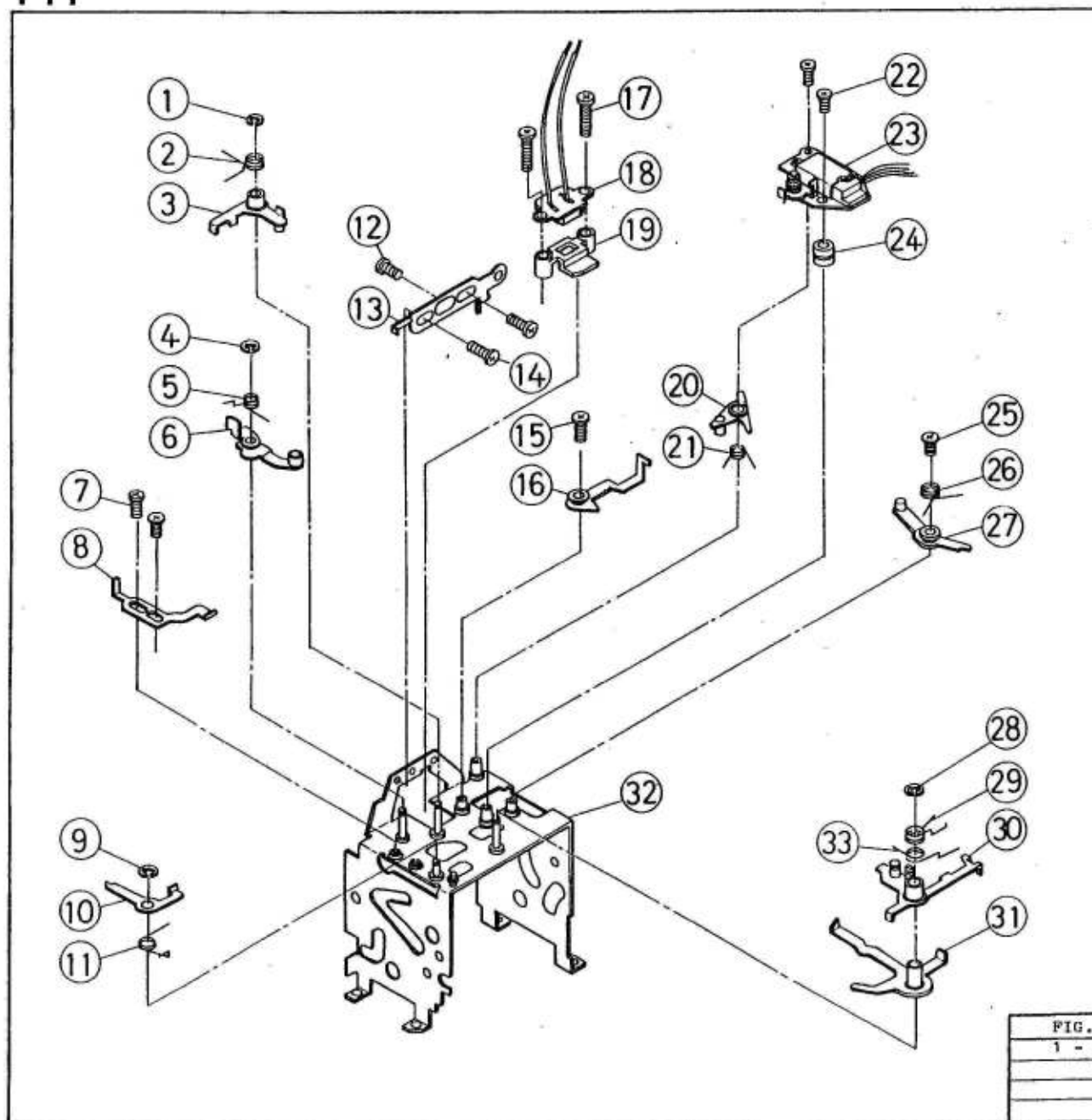


	PARTS NO.	DESCRIPTION	Q'TY
1	61901426	M.Box Reinforcement Plate SS	2
2	141 702	M. Box Reinforcement Plate	1
3	★	Mirror Box	1
4	071 748	M. Sliding Lever Ass'y	1
5	141 765	Governor Restore Spring	1
6	141 744	M. Sliding Lever (1) S.S.	1
7	141 745	Mirror Restore Spring	1
8	071 747	Mirror-up Lever Ass'y	1
9	141 754	Mirror-up Spring	1
10	66101525	E-15	1
11	141 767	Governor	1
12	61911526	Governor S.S.	2
13	071 757	45 Adjusting Base Plate Ass'y	1
14	61911526	45 Adjusting Base P.Ass'y SS	2
15	141 764	45 Lever Spring	1
16	66152525	GS Ring 2.5	1
17	139 833	ML Base Plate Spring	1
18	63915522	45 Adjusting S.S.	1

FIG. NO.	PARTS NO.	DESCRIPTION
1 - 18	071 701	Mirror Box Ass'y
		(See Page No. 11, 13)

NOTE : (Parts with marked "★" are not available)

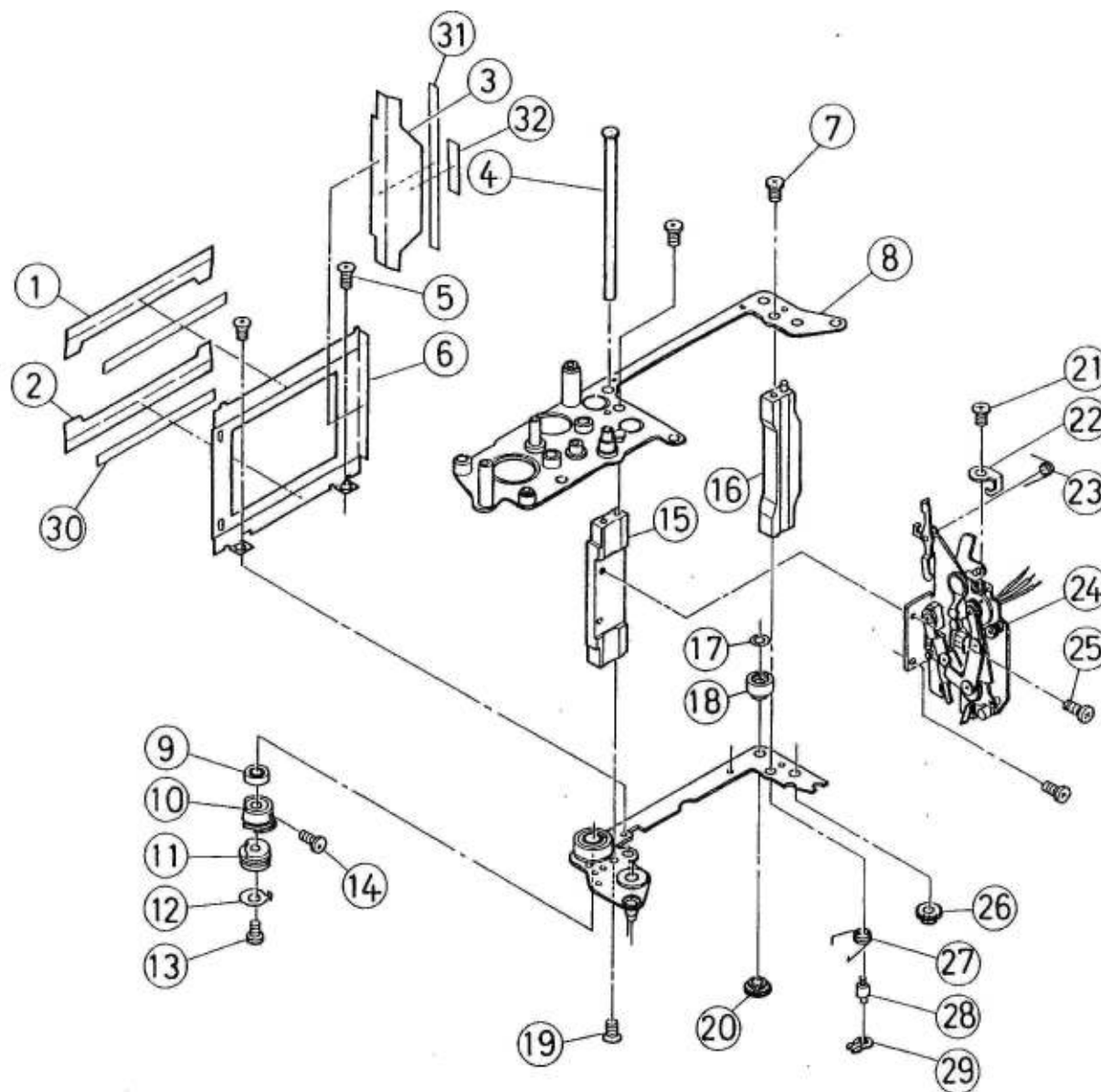




	PARTS NO.	DESCRIPTION	Q'TY
1	66101525	E-15	1
2	141 710	M. Set Lever Spring	1
3	071 706	M. Set Lever Ass'y	1
4	66101525	E-15	1
5	141 710	TR Connecting Lever Sp.	1
6	071 704	Hand Aperture Lever Ass'y	1
7	66001050	TR Connecting Lever S.S.	2
8	141 734	TR Connecting Lever	1
9	66101525	E-15	1
10	071 711	M. Set Lever Hook Ass'y	1
11	141 714	M. Set Lever Hook Spring	1
12	131 905	B. Lever (2) S.S.	3
13	141 768	B. Lever (2)	1
14	147 437	SR Lever (3) Shaft	2
15	66001050	RL (2) Ass'y S.S.	1
16	071 730	RL (2) Ass'y	1
17	66001059	SPD Holder S.S.	2
18	071 536	SPD Ass'y	1
19	141 766	SPD Holder	1
20	071 727	RL (1) Ass'y	1
21	141 733	RL (1) Spring	1
22	63912522	R-Magnet S.S.	2
23	141 784	R-Magnet Ass'y	1
24	141 724	Auto Lever Stopper	1
25	66001050	RL (3) Ass'y S.S.	1
26	141 736	RL (3) Spring	1
27	071 734	RL (3) Ass'y	1
28	66101525	E-15	1
29	141 721	Mirror Driving Spring	1
30	071 719	M. Driving Lever Ass'y	1
31	071 715	Auto Lever Ass'y	1
32	★	Mirror Box	1
33	141 718	Auto Aperture Spring	1

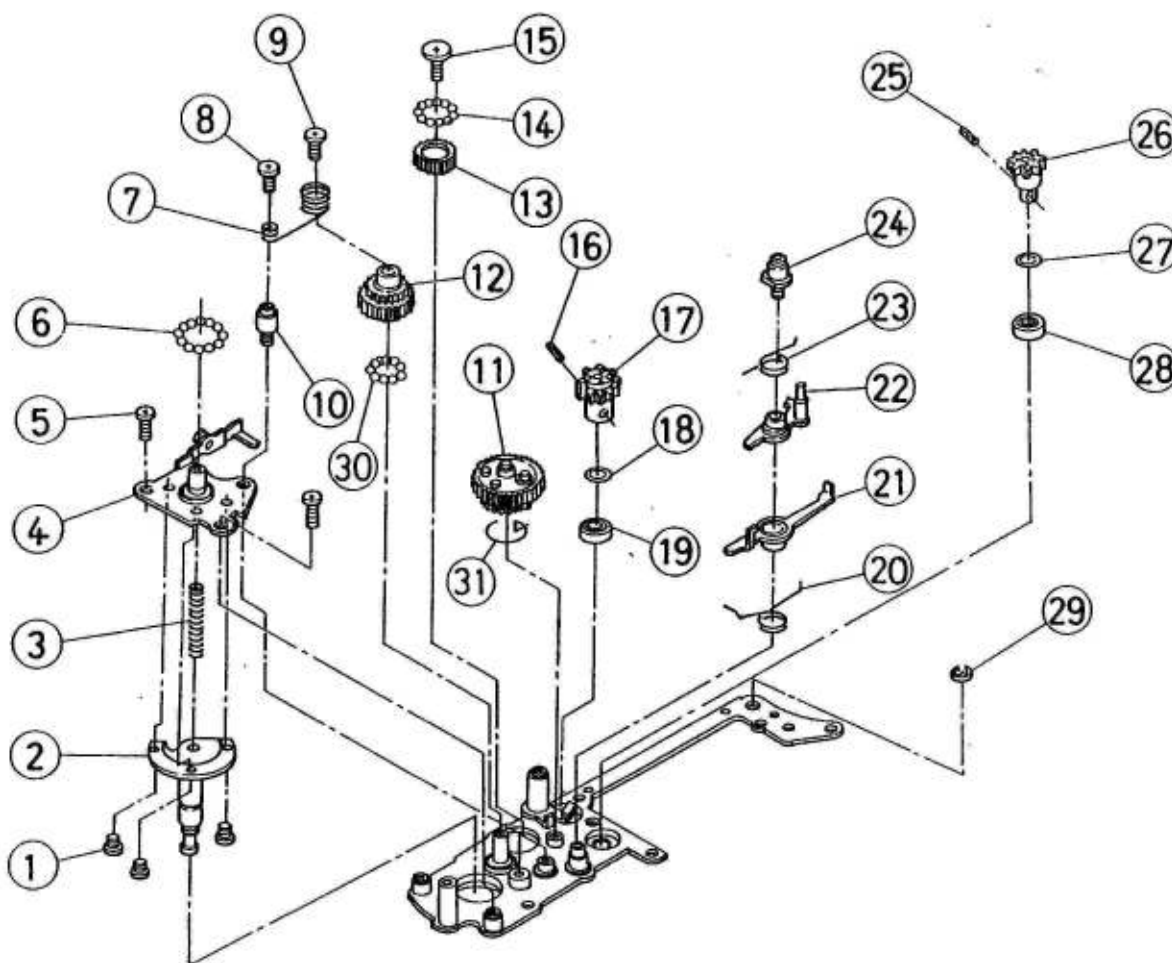
FIG. NO.	PARTS NO.	DESCRIPTION
1 - 33	071 701	Mirror Box Ass'y
		(See Page No. 11, 12)

NOTE : (Parts with marked "★" are not available)



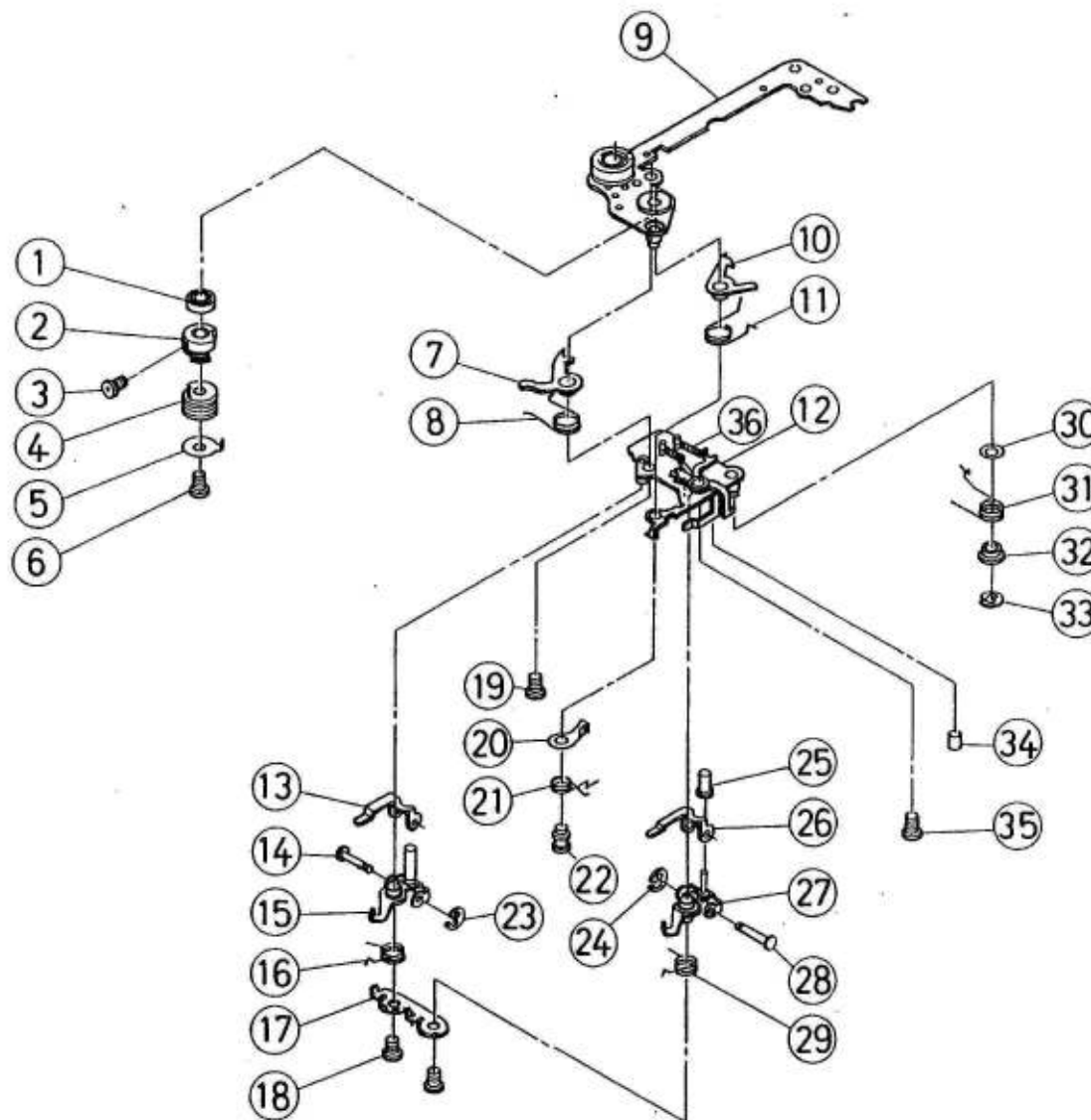
PARTS NO.	DESCRIPTION	QTY
1 131 695	Mirror Box Light-Proof Plate(1)	1
2 131 695	" " " "	1
3 141 396	Curtain Light-Proof Plate(2)	1
4 141 397	Interlock Shaft	1
5 61801826	Curtain Light-Proof Plate SS	2
6 141 385	Curtain Light-proof Plate	1
7 61813022	Upper Base Plate S.S.	2
8 071 301	Upper Base Plate Ass'y	1
9 141 355	Shutter Bearing	1
10 141 390	Second Curtain Hook Plate	1
11 141 391	Rotary Limit Guide	1
12 141 394	Second Curtain Stopper	1
13 66001054	Second Curtain Stopper S.S.	1
14 66002002	Second Curtain Hook Plate S.S.	1
15 141 370	Base Plate Post (Left)	1
16 141 371	Base Plate Post (Right)	1
17 60132110	Second Curtain Sp Shaft Washer	1
18 141 372	First Curtain Roller	1
19 61813022	Lower Base Plate S.S.	1
20 137 488	Ratchet Wheel	1
21 63912022	TR Mechan. S.S.	1
22 141 448	S-Mg Cord Fixer	1
23 141 449	Winding Stopper Set Hook Sp.	1
24 141 401	TR Mechan.	1
25 63912522	TR Mechan. S.S.	2
26 137 488	Ratchet Wheel	1
27 141 384	Ratchet Wheel Spring	1
28 137 489	Ratchet Wheel Spring Shaft	1
29 66172022	GS Ring	1
30 131 697	Adhesive Tape 1	2
31 131 697	Adhesive Tape 1	1
32 141 911	Lens Adhesive Tape	1

NOTE : (Parts with marked "★" are not available)



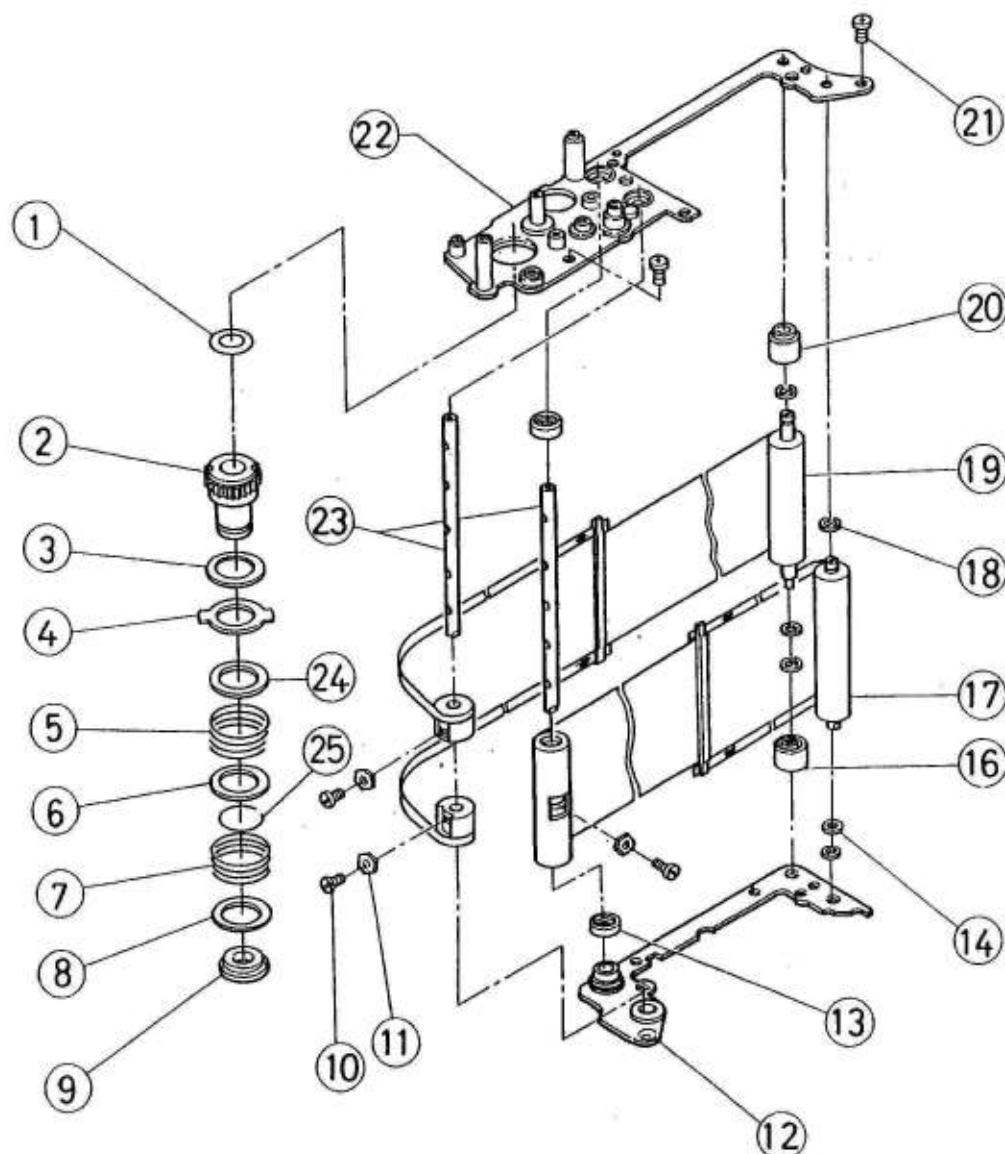
	PARTS NO.	DESCRIPTION	Q'TY
1	61911522	F Gear Shaft S.S.	3
2	071 341	F Gear Shaft Ass'y	1
3	141 343	B. Minus Contactor Spring	1
4	071 310	A. Gear Base Plate Ass'y	1
5	63912522	A. Gear Base Plate S.S.	2
6	66701020	Steel Ball	14
7	141 351	C. Gear Kick Spring	1
8	66001031	Kick Spring Shaft S.S.	1
9	63912522	C Gear S.S.	1
10	141 350	Kick Spring Shaft	1
11	071 325	Sector Gear Ass'y	1
12	071 318	C Gear Ass'y	1
13	141 320	Idle Gear	1
14	66701020	Steel Ball	13
15	66001053	Idle Gear Shaft S.S.	1
16	66662230	Spring Pin	1
17	141 399	Second Curtain Gear	1
18	60112110	Second Curtain Gear Washer	1
19	141 355	Shutter Bearing	1
20	141 337	Stopper Claw Set Lever Sp.	1
21	071 335	Stopper Claw Set Lever Ass'y	1
22	071 331	Stopper Claw Ass'y	1
23	141 334	Stopper Claw Spring	1
24	141 338	Stopper Claw S.S.	1
25	66662230	Spring Pin	1
26	141 398	First Curtain Gear	1
27	60112110	First Curtain Gear Washer	1
28	141 355	Shutter Bearing	1
29	66101525	E Ring	1
30	66701520	Steel Ball	8
31	141 698	Anti-rewind Spring	1

NOTE : (Parts with marked "★" are not available)



	PARTS NO.	DESCRIPTION	Q'TY
1	141 355	Shutter Bearing	1
2	141 389	First Curtain Hook Plate	1
3	66002002	First Curtain Hook Plate S.S.	1
4	141 391	Rotary Limit Guide	1
5	141 392	First Curtain Stopper	1
6	66001054	First Curtain Stopper S.S.	1
7	141 381	Second Curtain Hook Lever	1
8	141 382	Second Curtain Hook Lever Sp.	1
9	071 376	Lower Base Plate Ass'y	1
10	141 379	First Curtain Hook Lever	1
11	141 380	First Curtain Hook Lever Sp.	1
12	071 461	Brake Base Plate Ass'y	1
13	141 480	Rotary Limit Lever	1
14	141 481	Rotary Limit Lever Shaft	1
15	071 479	Brake Lever Ass'y (S)	1
16	141 487	Brake Spring	1
17	141 483	Brake Spring Fixer	1
18	66001050	Brake Spring Fixer S.S.	2
19	63912522	Brake Base Plate S.S.	1
20	141 484	First Curtain Release Lever	1
21	141 486	First Curtain Release Lever Sp.	1
22	141 485	First Curtain Release L. Shaft	1
23	66101225	E Ring	1
24	66101225	E Ring	1
25	141 478	X. Contact Collar	1
26	141 480	Rotary Limit Lever	1
27	071 474	Brake Lever Ass'y (P)	1
28	141 481	Rotary Limit Lever Shaft	1
29	141 482	Brake Spring	1
30	131 396	First Curtain Sp. Drum Washer	1
31	141 467	X. Contact	1
32	141 465	X. Contact Base	1
33	66101525	X. Contact Shaft	1
34	66931203	Brake Base Plate Tube	1
35	63904026	TR. Mechan. S.S.	1
36	141 472	Mechan. Hook Lever Spring	1

NOTE : (Parts with marked "★" are not available)

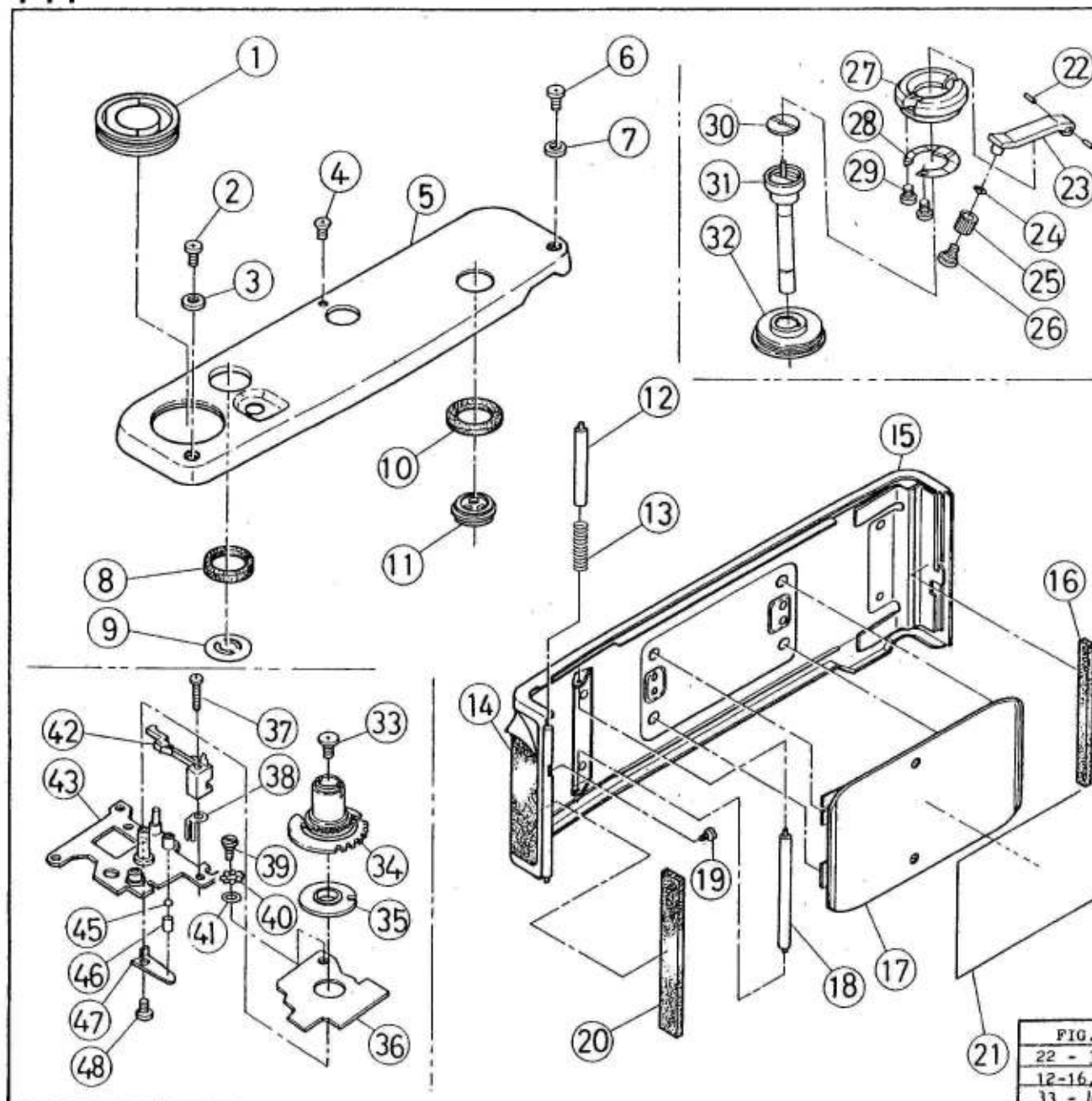


	PARTS NO.	DESCRIPTION	QTY
1	141 352	F. Gear Washer	1
2	141 344	F. Gear	1
3	141 346	Spool Friction Plate	1
4	141 353	Friction Plate	1
5	141 347	Friction Spring	1
6	141 346	Spool Friction Plate	1
7	141 348	F. Gear Spring	1
8	141 354	F. Gear Spring Washer	1
9	141 349	F. Gear Spring Washer	1
10	141 360	Curtain Adjusting Plate S.S.	3
11	141 359	Curtain Adjusting Plate	3
12	071 376	Lower Base Plate Ass'y	1
13	071 372	First Curtain Roller	2
14	131 396	First Curtain Drum Washer	2
16	141 373	Second Curtain Roller	1
17	071 358	Second Curtain Ass'y	1
18	66101525	E Ring	1
19	071 357	First Curtain Ass'y	1
20	141 373	First Curtain Roller	1
21	61912524	Shutter S.S.	2
22	071 301	Upper Base Plate Ass'y	1
23	141 356	Shutter Shaft	2
24	141 346	Spool Friction Plate	1
25	132 649	Spring Cover Stopper	1

FIG. NO.	PARTS NO.	DESCRIPTION
2 -9, 24, 25.	071 344	Friction Gear Ass'y

NOTE : (Parts with marked "★" are not available)





PARTS NO.	DESCRIPTION	Q'TY
1 071 195	Battery Cap Ass'y	1
2 131 199	Bottom Cover S.S.	1
3 131 198	Bottom Cover Collar	1
4 141 194	Bottom Cover S.S.	1
5 141 190	Bottom Cover	1
6 131 199	Bottom Cover S.S.	1
7 131 198	Bottom Cover Collar	1
8 131 194	MD Light-proof Moquette	1
9 141 697	MD Coupler Plate	1
10 132 654	Terminal Packing	1
11 142 451	Terminal Insulator	1
12 131 130	Hinge Shaft (1)	1
13 131 133	Hinge Shaft Spring	1
14 141 152	Back Cover Leather	1
15 071 152	Back Cover Ass'y	1
16 131 126	Back Cover Moquette (2)	1
17 071 151	Pressure Plate Ass'y	1
18 131 136	Film Roller	1
19 131 132	Hinge Shaft Stopper	1
20 131 125	Back Cover Moquette (1)	1
21 141 158	Pressure Plate Seat	1
22 141 255	Crank Arm Shaft	2
23 141 254	Crank Arm	1
24 60151810	Crank Arm Washer	1
25 131 672	Crank Knob	1
26 131 671	Crank Knob S.S.	1
27 141 251	Rewind Knob (1)	1
28 141257-8	Rewind Click Spring	1
29 61902022	Rewind Click Spring S.S.	2
30 141 252	Rewind Knob Name Plate	1
31 131659-A	Rewind Shaft Ass'y	1
32 141 256	Rewind Knob (2)	1
33 66001067	ASA Dial Shaft S.S.	1
34 071 216	Corrective Click Plate Ass'y	1
35 071 210	ASA Contactor Ass'y	1
36 141 517	ASA Resistor Base	1
37 63918022	Main Switch S.S.	1
38 141 225	FPC Holder	1
39 141 224	ASA Base S.S.	1
40 141 388	Spring Washer	1
41 60132110	Washer	1
42 141 222	Main Switch	1
43 071 201	ASA Base Plate Ass'y	1
45 66701520	Corrective Click Ball	1
46 141 205	Click Ball Shaft	1
47 141 204	Corrective Click Spring	1
48 66001041	Corrective Click Sp. S.S.	1

FIG. NO.	PARTS NO.	DESCRIPTION
22 - 32	071 251	Rewind Knob Assy(See Page#1)
12-16, 18-20	071 152	Back Cover Ass'y
33 - 48	★	ASA Resistor Ass'y(See Page#6)

NOTE : (Parts with marked "★" are not available)