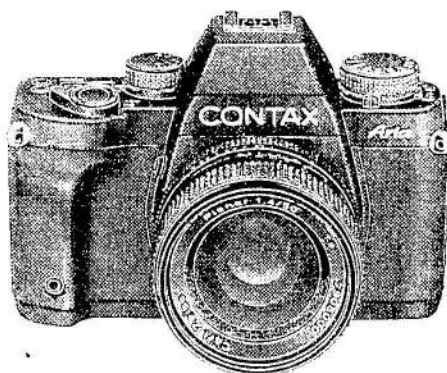


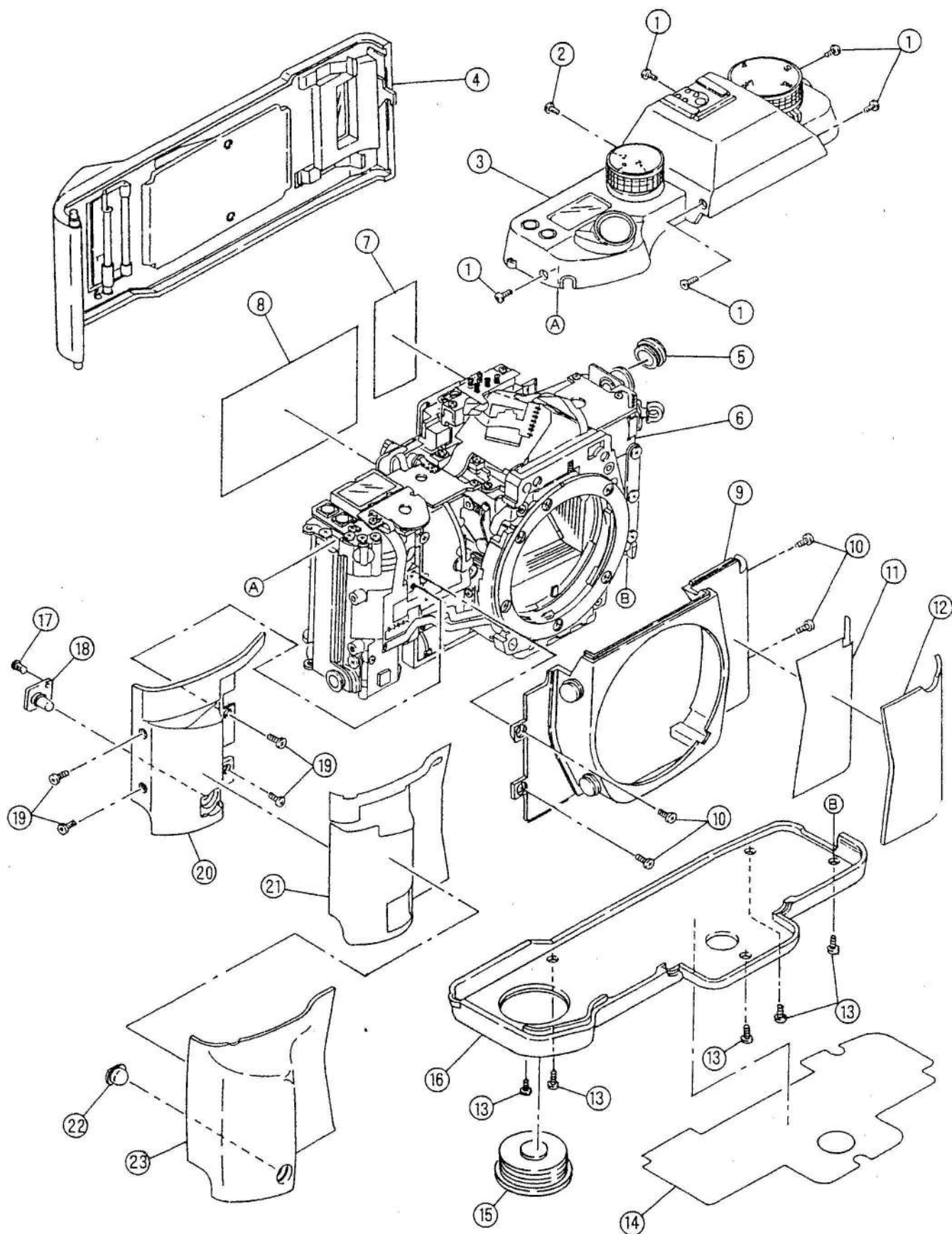


CONTAX *Aria*

ASSEMBLING CHART

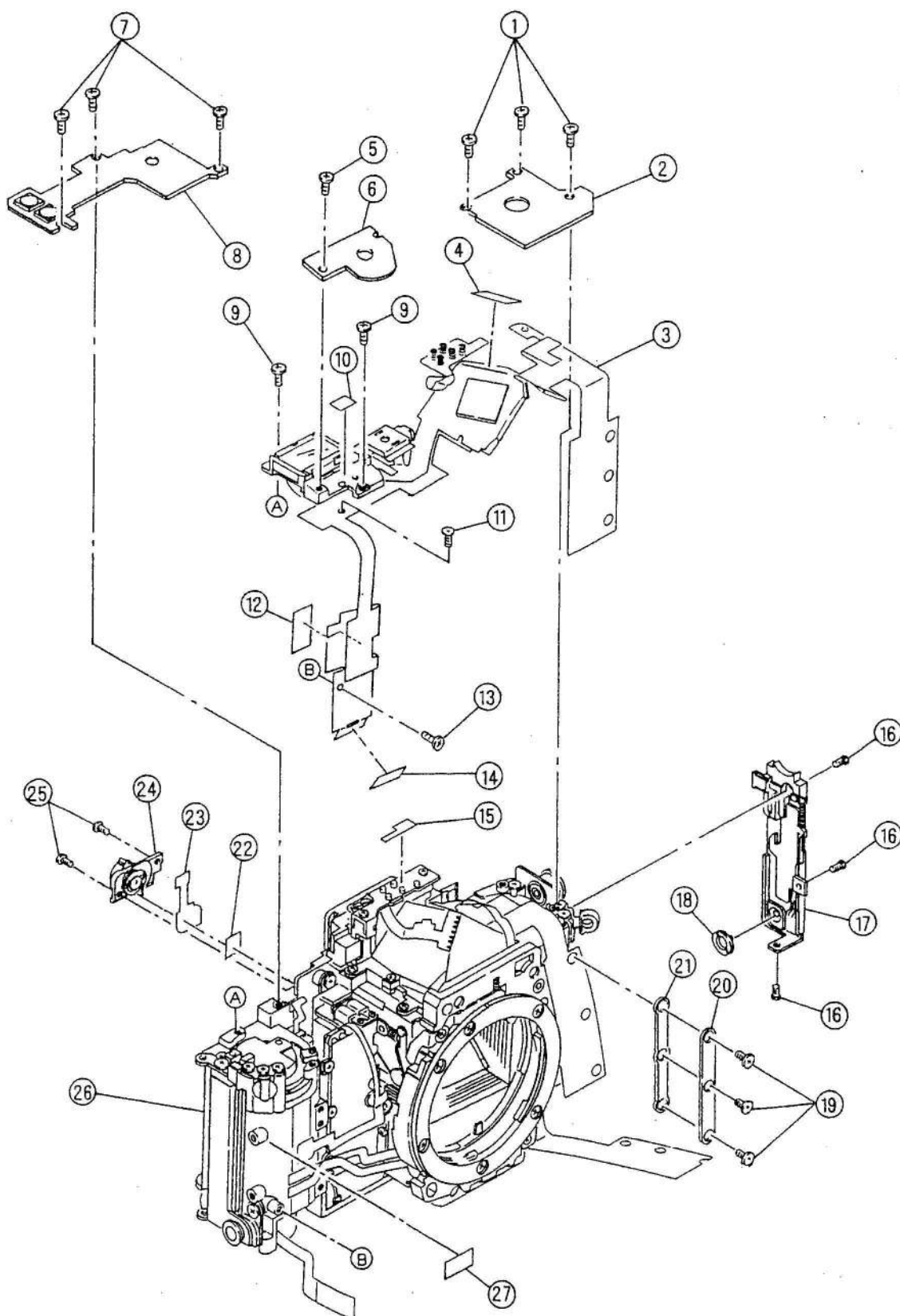


KYOCERA CORPORATION
Optical Equipment Group
Service Dept. LAW 980820



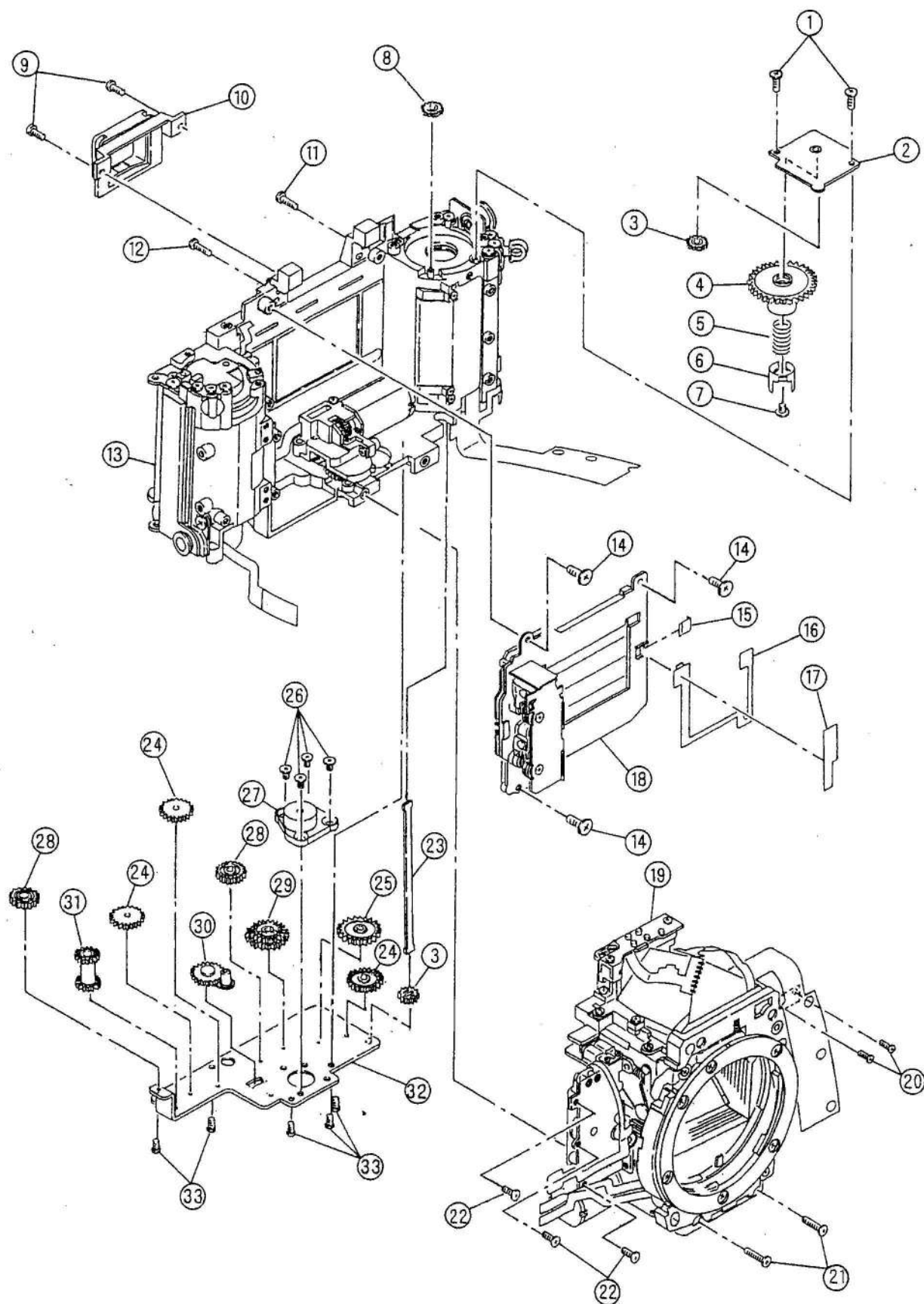
	PARTS NO.	DESCRIPTION	QTY
1	69114519	TOP COVER ASS'Y S.S	5
2	69113579	TOP COVER ASS'Y S.S	1
3	1AWB6100	TOP COVER ASS'Y (See Page No.7)	1
4	1AWB7400	BACK COVER ASS'Y (See Page No.5)	1
5	13918800	SYNCHRO. CAP	1
6	*	BODY	1
7	1AW11500	EXPLANATION SEAL	1
8	1AW14400	PRESSURE PLATE SHEET	1
9	1AWB6000	FRONT COVER ASS'Y	1
10	69113576	FRONT COVER ASS'Y S.S	4
11	1AW26900	FRONT PLATE RUBBER (R) TAPE	1
12	1AW26700	FRONT PLATE RUBBER (R)	1
13	69113579	BOTTOM COVER S.S	5
14	1AW28200	BOTTOM COVER PROTECTOR	1
15	1AQ11500	BATTERY CAP	1
16	1AW28100	BOTTOM COVER	1
17	69113076	SELF-TIMER LED BOARD ASS'Y S.S	1
18	1AWE3400	SELF-TIMER LED BOARD ASS'Y	1
19	69113576	FRONT PLATE (L) S.S	4
20	1AW27000	FRONT PLATE (L)	1
21	1AW26800	FRONT PLATE RUBBER (L) TAPE	1
22	1AH15200	SELF-TIMER WINDOW	1
23	1AW26600	FRONT PLATE RUBBER (L)	1

The parts names with * mark are not supplied as a repair parts.



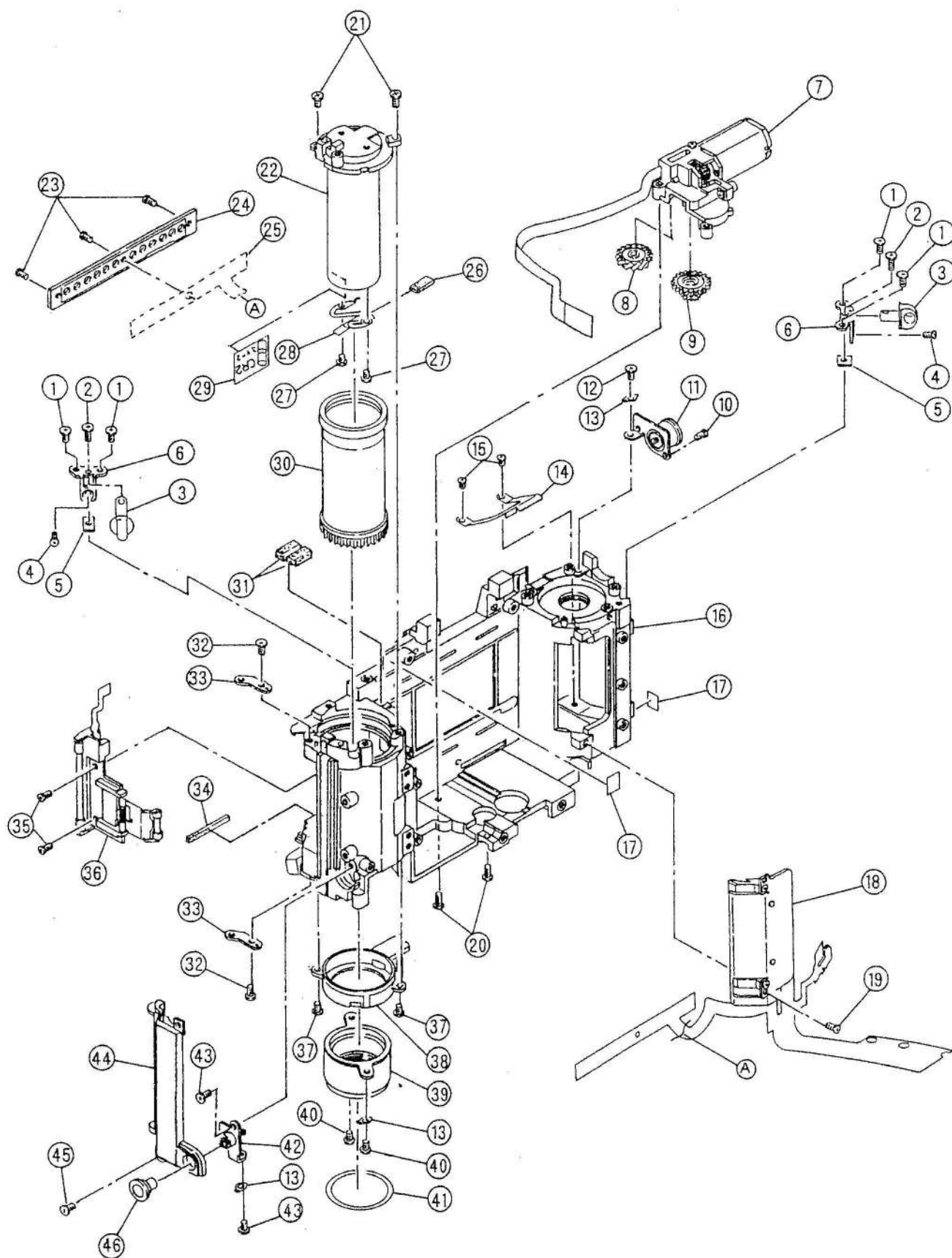
	PARTS No.	DESCRIPTION	QTY
1	69113076	SHUTTER DIAL P.C BOARD ASSY S.S	3
2	1AWE3300	SHUTTER DIAL P.C BOARD ASSY	1
3	1AWE3000	MAIN FPC ASSY	1
4	3CU18100	INSULATOR (2)	1
5	69113076	MAIN SW BOARD S.S	1
6	1AW52500	MAIN SW BOARD	1
7	69113076	EXP. COMPENSATION DIAL P.C BOARD ASSY S.S	3
8	1AWE3200	EXP. COMPENSATION DIAL P.C BOARD ASSY	1
9	69113076	C. LCD HOLDER S.S	2
10	1AS56600	FPC STICK TAPE (2)	1
11	69101566	MAIN FPC ASSY S.S	1
12	*	DOUBLE-STICK TAPE	1
13	69113076	MAIN FPC ASSY S.S	1
14	1AW59500	FPC FIXED TAPE	1
15	1AW84800	SHOE BASE TAPE	1
16	69213579	B. LOCK PLATE BASE ASSY S.S	3
17	1AWB5000	B. LOCK PLATE BASE ASSY	1
18	3AQ65100	RW BUTTON	1
19	66001148	FPC CONNECT PLATE S.S	3
20	1AQ14000	FPC CONNECT PLATE	1
21	1AS15200	FPC CONNECTE RUBBER	1
22	1AW25700	LIGHT METERING FPC TAPE	1
23	1AW50900	LIGHT METERING FPC	1
24	1AWB5200	LIGHT METERING LEVER ASSY	1
25	69113576	LIGHT METERING LEVER ASSY S.S	2
26	*	BODY	1
27	*	DOUBLE-STICK TAPE	1

The parts names with * mark are not supplied as a repair parts.



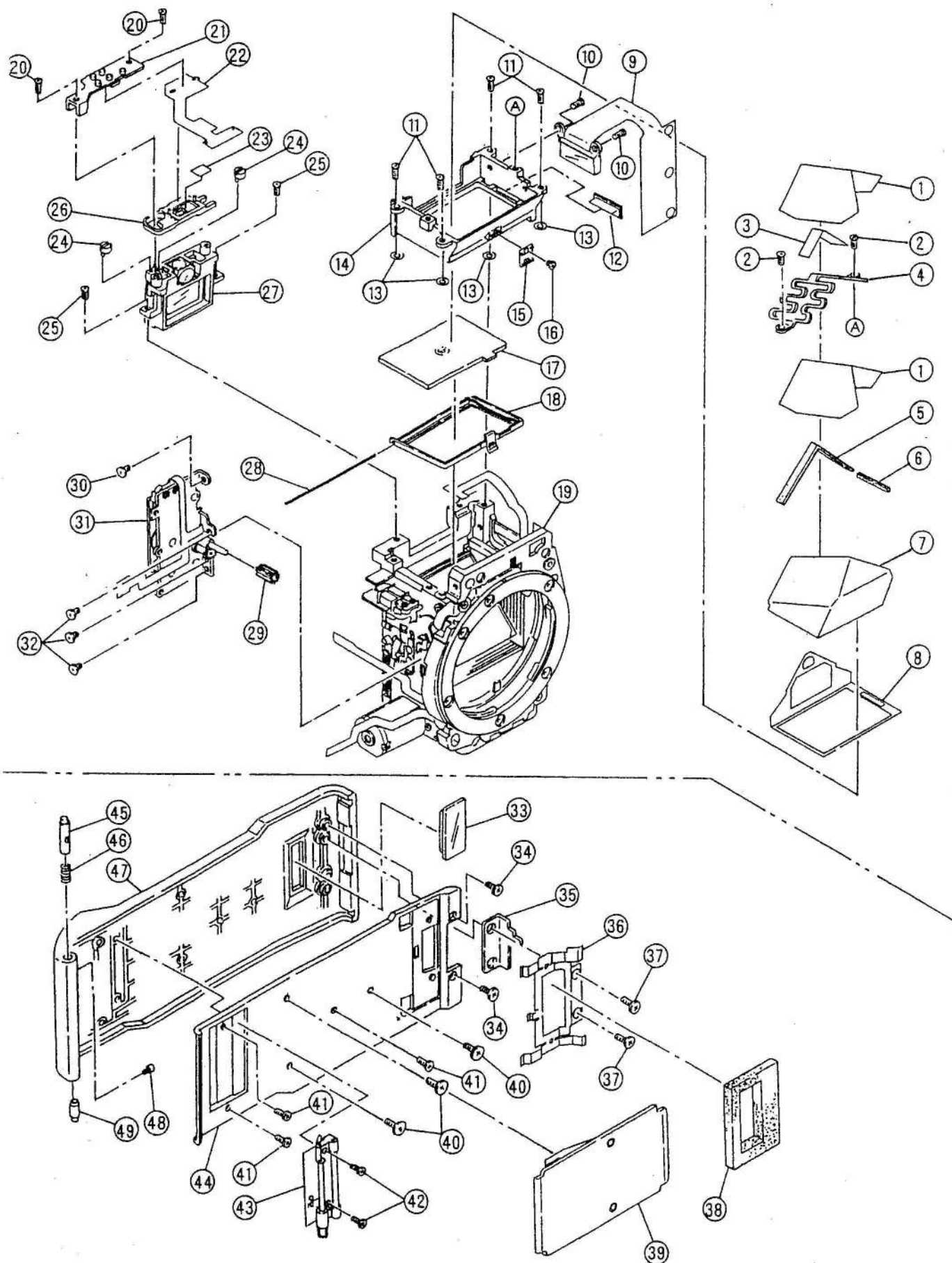
	PARTS No.	DESCRIPTION	QTY
1	66001126	REWIND BASE PLATE ASS'Y S.S	2
2	*	REWIND BASE PLATE	1
3	1AW32200	REWIND GEAR (3)	2
4	1AS33700	REWIND GEAR (5)	1
5	1AF79000	RW FORK SPRING	1
6	1AF78900	RW FORK	1
7	66001225	RW FORK S.S	1
8	1AW32300	REWIND GEAR (4)	1
9	69124076	EYE-PIECE FRAME S.S	2
10	1AW25800	EYE-PIECE FRAME	1
11	69225066	MIRROR BOX ASS'Y S.S	1
12	69226066	MIRROR BOX ASS'Y S.S	1
13	*	BODY	1
14	66001126	SHUTTER UNIT S.S	3
15	1AW35100	SHUTTER P.R RETAINER	1
16	1AWE1100	SHUTTER FPC ASS'Y	1
17	1AW35200	SHUTTER P.R FIXED TAPE	1
18	1AW35000	SHUTTER UNIT	1
19	*	MIRROR BOX (See Page No.5, No.6)	1
20	69113576	MIRROR BOX ASS'Y S.S	2
21	69228066	MIRROR BOX ASS'Y S.S	2
22	69313576	MIRROR BOX ASS'Y S.S	3
23	1AW32600	REWIND GEAR (3) PLATE	1
24	1AW31300	WINDING GEAR (5)	3
25	1AW32000	REWIND GEAR (1)	1
26	63823026	TRIPOD SOCKET S.S	4
27	1AW33000	TRIPOD SOCKET	1
28	1AW31500	WINDING GEAR (7)	2
29	1AW32100	REWIND GEAR (2)	1
30	1AWB1300	EPICYCLIC GEAR BASE PLATE ASS'Y	1
31	1AW31400	WINDING GEAR (6)	1
32	*	WINDING BASE PLATE	1
33	69313576	WINDING BASE PLATE S.S	5
2,4-7	1AWB1500	REWIND BASE PLATE ASS'Y	1
26,27,32	1AWB1400	WINDING BASE PLATE ASS'Y	1

The parts names with * mark are not supplied as a repair parts.



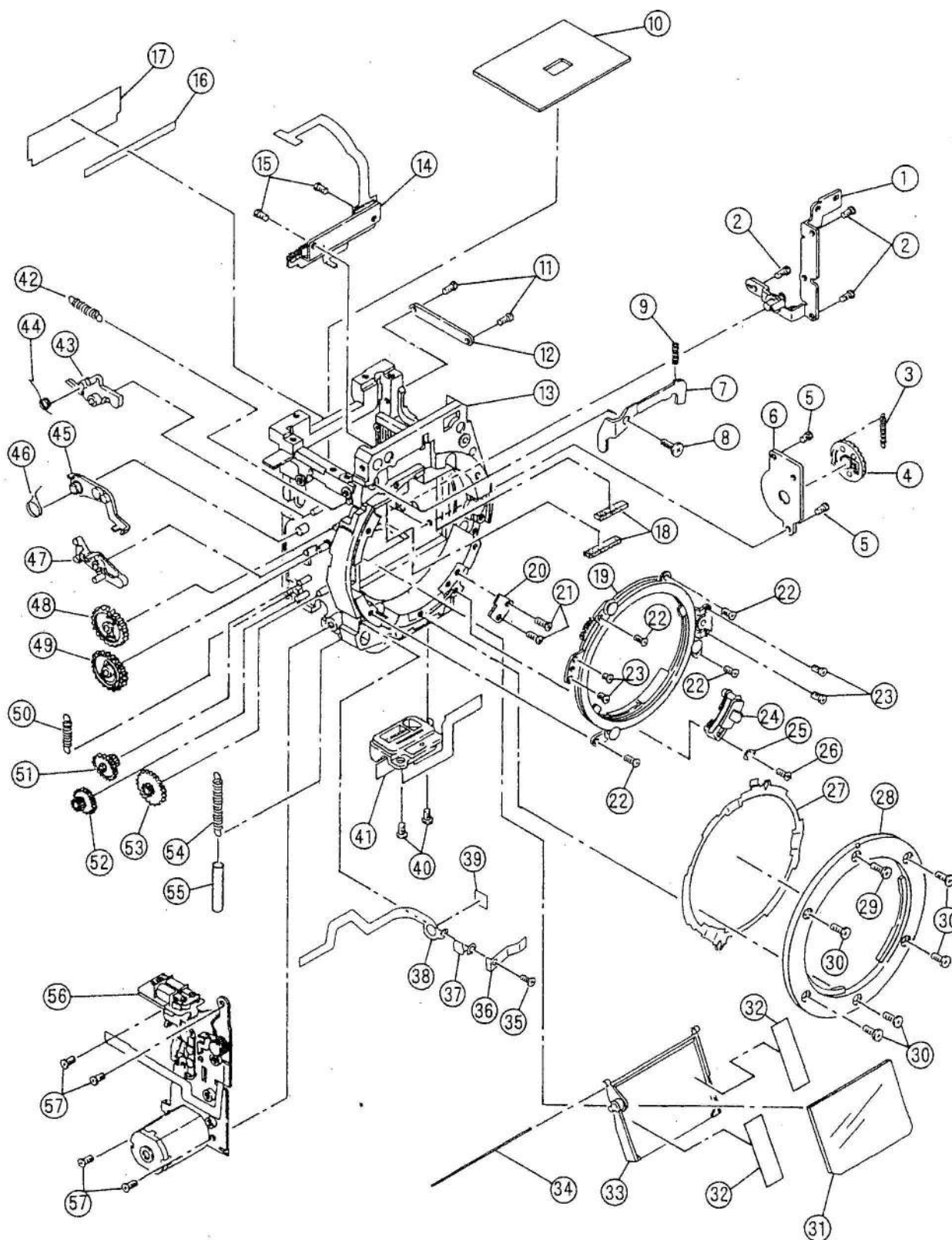
	PARTS No.	DESCRIPTION	QTY
1	69123576	STRAP HOLDER REINFORCEMENT PLATE S.S	4
2	66001278	STRAP HOLDER S.S	2
3	1AW10700	STRAP HOLDER	2
4	69313576	STRAP HOLDER REINFORCEMENT PLATE S.S	2
5	1AW10900	STRAP HOLDER SPACER	2
6	1AW10800	STRAP HOLDER REINFORCEMENT PLATE	2
7	1AWB1100	WINDING MOTOR HOLDER ASS'Y	1
8	1AW30900	WINDING GEAR (4)	1
9	1AW30800	WINDING GEAR (3)	1
10	69212566	S. SOCKET ASS'Y S.S	1
11	1AWB0200	S. SOCKET ASS'Y	1
12	66001126	S. SOCKET ASS'Y S.S	1
13	3CU16600	CONDUCTION AUXILIARY PLATE	3
14	1AS13600	CARTRIDGE LIFTER	1
15	69112062	CARTRIDGE LIFTER S.S	2
16	*	BODY	1
17	1AS56600	FPC STICK TAPE (2)	2
18	1AWB0400	DX ASS'Y	1
19	69113576	DX ASS'Y S.S	1
20	66001100	WINDING MOTOR HOLDER ASS'Y S.S	2
21	69214076	BATTERY BOX S.S	2
22	1AW14100	BATTERY BOX	1
23	69113079	CONTACT COVER S.S	3
24	1AS13800	CONTACT COVER	1
25	*	DX FPC	1
26	1AW14500	ELECTRODE MOQUETTE	1
27	69112066	BATTERY CONTACT (+) S.S	2
28	1AQ11600	BATTERY CONTACT (+)	1
29	1AQ11900	BATTERY SEAL	1
30	1AW31700	SPOOL	1
31	1AW13900	WPR FPC MOQUETTE	2
32	66001237	HINGE PLATE S.S	2
33	1AW10600	HINGE PLATE	2
34	1AW11600	BODY MOQUETTE	1
35	61913026	FILM ROLLER ASS'Y S.S	2
36	1AWB0300	FILM ROLLER ASS'Y	1
37	69213576	SPOOL HOLDER S.S	2
38	1AW31800	SPOOL HOLDER	1
39	1AWB0700	BATTERY CAP HOLDER ASS'Y	1
40	69213576	BATTERY CAP HOLDER ASS'Y S.S	2
41	1AW14300	BATTERY CAP LIGHT SHIELD TAPE	1
42	1AWB0500	R. SOCKET ASS'Y	1
43	69123576	R. SOCKET ASS'Y S.S	2
44	1AW10500	BODY REINFORCEMENT PLATE	1
45	66001126	BODY REINFORCEMENT PLATE S.S	1
46	1AS11300	RELEASE CAP	1

The parts names with * mark are not supplied as a repair parts.



	PARTS No.	DESCRIPTION	QTY
1	17484200	PENTA PRISM COVER	2
2	69113076	PENTA PRISM RETAINING SPRING S.S	2
3	*	DOUBLE-STICK TAPE	1
4	1AW82300	PENTA PRISM RETAINING SPRING	1
5	1AH85000	PENTA PRISM DUST-PROOF MOQUETTE	1
6	1AW70200	MIRROR CUSHION	1
7	1AW82000	PENTA PRISM	1
8	1AW81400	VIEWFINDER FRAME	1
9	1AWF2200	FINDER INDICATOR COVER ASS'Y	1
10	69203076	FINDER INDICATOR COVER ASS'Y S.S	2
11	69114576	PENTA PRISM HOLDER S.S	4
12	1AW81200	FINDER INDICATOR PRISM	1
13	12866600	FOCUS ADJUST WASHER (t:0.02)	4
	12866700	FOCUS ADJUST WASHER (t:0.05)	4
	60311812	FOCUS ADJUST WASHER (t:0.1)	4
	60321810	FOCUS ADJUST WASHER (t:0.2)	4
	60331817	FOCUS ADJUST WASHER (t:0.3)	4
	60341812	FOCUS ADJUST WASHER (t:0.4)	4
	60351810	FOCUS ADJUST WASHER (t:0.5)	4
	60361817	FOCUS ADJUST WASHER (t:0.6)	4
14	1AW81000	PENTA PRISM HOLDER	1
15	1AW82700	PG LOCK SPRING (S)	1
16	69101866	PG LOCK SPRING (S) S.S	1
17	17484900	FOCUSING SCREEN	1
18	1AWF2100	FOCUSING SCREEN HOLDER ASS'Y	1
19	*	MIRROR BOX	1
20	69113076	ACCESSORY SHOE BASE S.S	2
21	1AW84700	ACCESSORY SHOE BASE	1
22	1AWE2200	LIGHT METERING FPC ASS'Y	1
23	1AS66600	FPC STICK TAPE (2)	1
24	1AH88500	LIGHT METERING ECCENTRICITY PIN	2
25	69113576	EYE-PIECE HOLDER ASS'Y	2
26	*	LIGHT METERING BASE	1
27	*	EYE-PIECE HOLDER	1
28	1AW82900	PG HOLDER SHAFT	1
29	1AW64500	FC GEAR (1)	1
30	69113576	FC UNIT ASS'Y S.S	1
31	1AWB4000	FC UNIT ASS'Y	1
32	61912026	FC UNIT ASS'Y S.S	3
33	17416600	FILM CHECK WINDOW	1
34	66001152	BACK COVER REINFORCEMENT PLATE S.S	2
35	1AW18300	BACK COVER LOCK CLAW	1
36	1AW18400	CARTRIDGE SPRING	1
37	66001152	CARTRIDGE SPRING S.S	2
38	17417200	FILM CHECK WINDOW MOQUETTE	1
39	1AWB7600	PRESSURE PLATE ASS'Y	1
40	66001267	BACK COVER REINFORCEMENT PLATE S.S	3
41	66001126	BACK COVER REINFORCEMENT PLATE S.S	3
42	66001126	BACK COVER ROLLER ASS'Y S.S	2
43	1AWB7500	BACK COVER ROLLER ASS'Y	1
44	1AW18200	BACK COVER REINFORCEMENT PLATE	1
45	1AW19000	HINGE SHAFT (UPPER)	1
46	1AW19200	HINGE SHAFT SPRING	1
47	1AW18100	BACK COVER	1
48	66001166	HINGE SHAFT RELEASE PIN	1
49	1AW19100	HINGE SHAFT (LOWER)	1
19,29-32	1AWB2100	MIRROR BOX ASS'Y	(See Page No .6) 1
20-24,26,27	1AWF2300	EYE-PIESE ASS'Y	1
33-49	1AWB7400	BACK COVER ASS'Y	1

The parts names with * mark are not supplied as a repair parts.

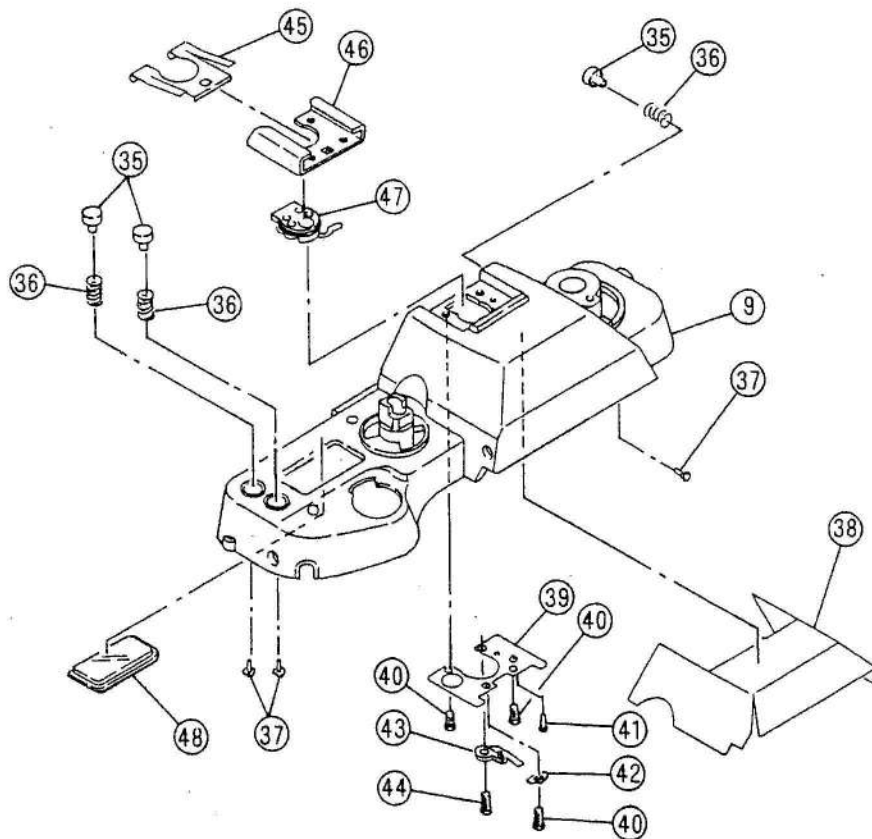
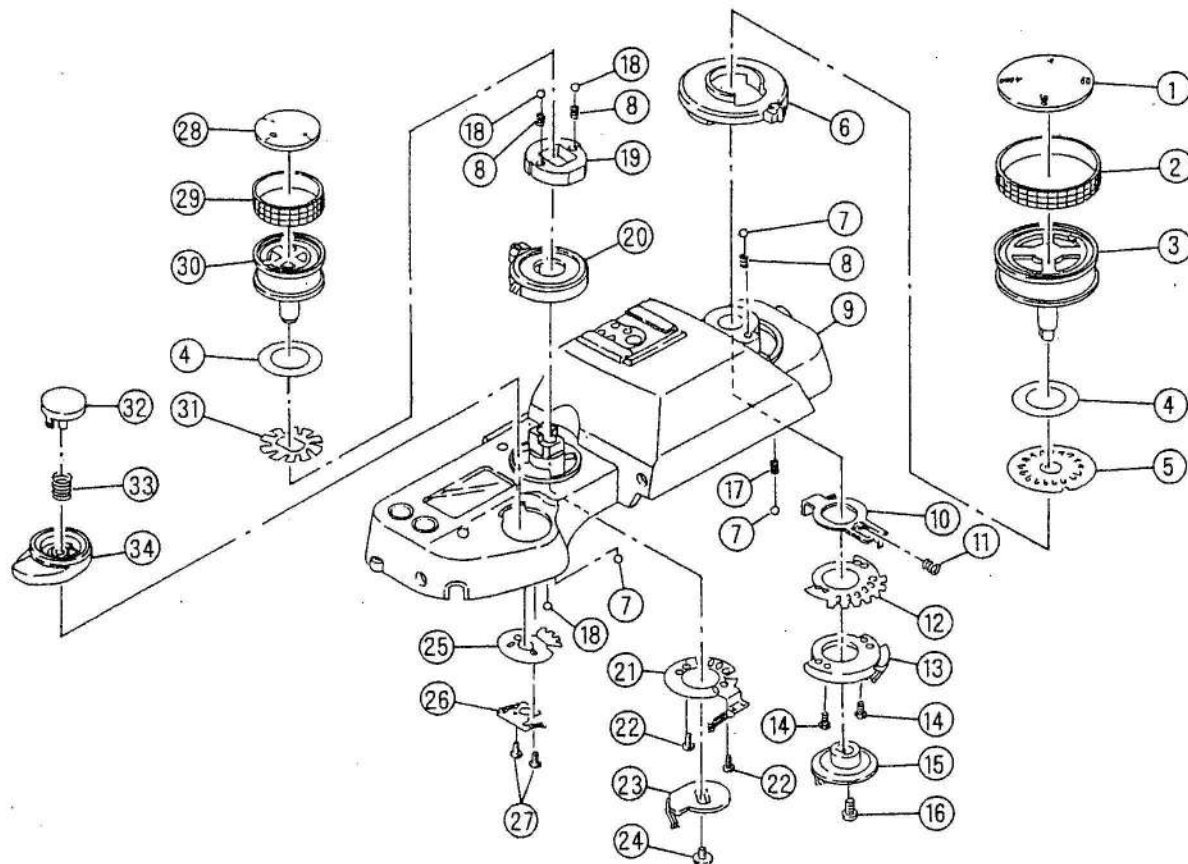


	PARTS No.	DESCRIPTION	QTY
1	1AWB2300	AV GEAR (L) RETAINER ASS'Y	1
2	69113576	AV GEAR (L) RETAINER ASS'Y S.S	3
3	17476400	AV SPRING	1
4	1AWB2200	AV GEAR (L) ASS'Y	1
5	69112566	AV BOARD S.S	2
6	1AW52300	AV BOARD	1
7	1AW71500	LENS LOCK LEVER	1
8	66001268	LENS LOCK LEVER S.S	1
9	1AA78500	LENS LOCK LEVER SPRING	1
10	1AW71000	ANTI-REFLECTION PLATE (1)	1
11	69313576	MB REINFORCEMENT PLATE (1) S.S	2
12	1AW71800	MB REINFORCEMENT PLATE (1)	1
13	*	MIRROR BOX	1
14	1AWB3700	OPEN F. STOP SIGNAL BASE PLATE ASS'Y	1
15	69203576	OPEN F. STOP SIGNAL BASE PLATE ASS'Y S.S	2
16	1AW83400	PG LIGHT-SHIELD CURTAIN TAPE	1
17	1AW83300	PG LIGHT-SHIELD CURTAIN	1
18	1AW70200	MIRROR CUSHION	2
19	1AWB2500	APERTURE RING HOLDING PLATE ASS'Y	1
20	13981300	MOUNT STOPPER	1
21	69113576	MOUNT STOPPER S.S	2
22	69113076	APERTURE RING HOLDING PLATE ASS'Y S.S	4
23	69103576	APERTURE RING HOLDING PLATE ASS'Y S.S	4
24	1AWB2400	THETA BASE PLATE ASS'Y	1
25	3CU16600	CONDUCTION AUXILIARY PLATE	1
26	69113572	THETA BASE PLATE ASS'Y S.S	1
27	1AW70500	MOUNT SPRING	1
28	1AW70700	BODY MOUNT	1
29	66001254	BODY MOUNT S.S	1
30	69125062	BODY MOUNT S.S	5
31	17480100	MAIN MIRROR	1
32	16871700	M. ADHESIVE TAPE	2
33	*	MIRROR FRAME	1
34	*	MIRROR SHAFT	1
35	69113572	PREVIEW SWITCH S.S	1
36	1AW70800	MOUNT LUG PLATE	1
37	1AA92900	PREVIEW SWITCH	1
38	1AW50800	PREVIEW FPC	1
39	1AS56600	FPC STICK TAPE (2)	1
40	69113576	TTL FLASH AUTO IC HOLDER ASS'Y S.S	2
41	1AWB2700	TTL FLASH AUTO IC HOLDER ASS'Y	1
42	1AG71700	MIRROR UP LEVER SPRING	1
43	1AW76300	MIRROR UP LEVER	1
44	1AW76400	MIRROR DOWN SPRING	1
45	1AWB2900	APERTURE LEVER ASS'Y	1
46	1AW72400	S. RELEASE LEVER SPRING	1
47	1AW76000	S. CHARGE LEVER	1
48	1AWB3000	M. CAM GEAR ASS'Y	1
49	1AW75500	S. CAM GEAR	1
50	1AW76100	S. CHARGE LEVER SPRING	1
51	1AM71300	MIRROR GEAR (3)	1
52	1AM71200	MIRROR GEAR (2)	1
53	1AW75100	MS GEAR (4)	1
54	1AM73300	APERTURE LEVER SPRING	1
55	1AW76900	APERTURE LEVER SPRING COVER	1
56	1AWB3100	MS BASE PLATE ASS'Y	1
57	69113576	MS BASE PLATE ASS'Y S.S	4

1~57 1AWB2100 MIRROR BOX ASS'Y

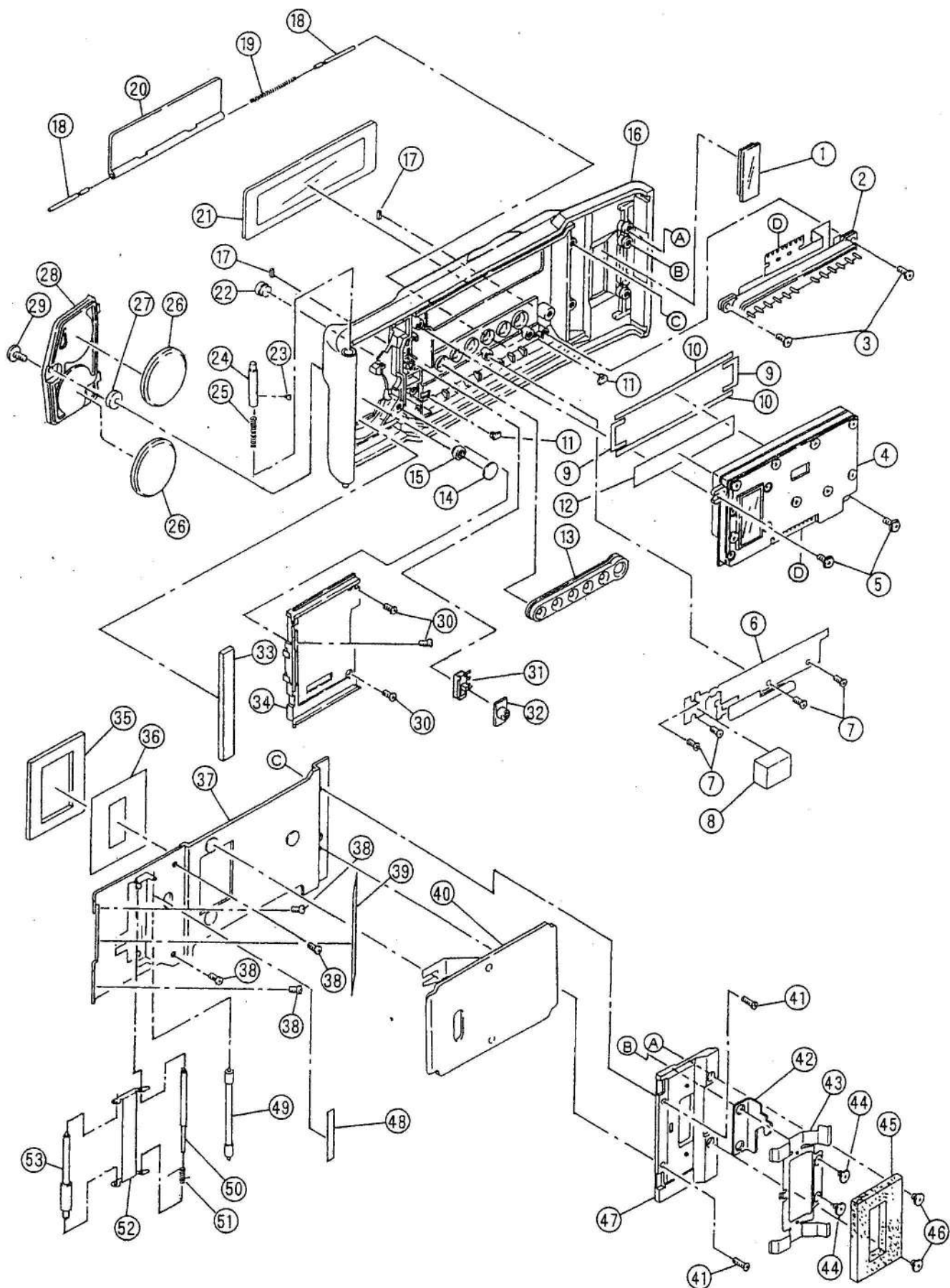
(See Page No. 5) 1

The parts names with * mark are not supplied as a repair parts.



	PARTS No.	DESCRIPTION	QTY
1	1AW23200	SHUTTER DIAL NAME PLATE	1
2	1AW23500	SHUTTER DIAL COVER	1
3	1AW23300	SHUTTER DIAL	1
4	1AW22700	EXP. COMPENSATION CLICK TAPE	2
5	1AW23600	SHUTTER DIAL CLICK PLATE	1
6	1AW24100	MODE LEVER	1
7	66701620	STEEL BALL (ϕ 1.6)	3
8	1AW23700	DIAL CLICK SPRING	3
9	*	TOP COVER	1
10	1AW24400	MODE LOCK PLATE	1
11	1AW24500	MODE LOCK SPRING	1
12	1AF24200	MODE CLICK PLATE	1
13	1AWB6800	MODE CONTACT BASE ASSY	1
14	69103066	MODE CONTACT BASE ASSY S.S	2
15	1AWB7000	S. DIAL CONTACT ASSY	1
16	69214076	S. DIAL CONTACT ASSY S.S	1
17	1AF21000	MODE CLICK SPRING	1
18	66701520	STEEL BALL (ϕ 1.5)	3
19	1AW22500	EXP. COMPENSATION CLICK BASE	1
20	1AW22800	ABC LEVER	1
21	1AWB6500	ABC CLICK ASSY	1
22	69103066	ABC CLICK ASSY S.S	2
23	1AWB6700	EXP. COMPENSATION CONTACT ASSY	1
24	66001152	EXP. COMPENSATION CONTACT ASSY S.S	1
25	1AW21300	MAIN SW CLICK	1
26	1AW21400	MAIN SW CONTACT	1
27	69103066	MAIN SW CONTACT S.S	2
28	1AW21900	EXP. COMPENSATION DIAL NAME PLATE	1
29	1AW22200	EXP. COMPENSATION DIAL COVER	1
30	1AW22000	EXP. COMPENSATION DIAL	1
31	1AW22300	EXP. COMPENSATION CLICK PLATE	1
32	1AW21100	RELEASE BUTTON	1
33	1AW21200	RELEASE BUTTON SPRING	1
34	1AW21000	MAIN SW LEVER	1
35	1AF26500	UD BUTTON	3
36	1AF26600	UD BUTTON SPRING	3
37	1AF26700	M. LOCK BUTTON SHAFT	3
38	1AW20700	TOP COVER INSULATION SHEET	1
39	1AW20600	SHOE HOLDING PLATE	1
40	61913022	ACCESSORY SHO S.S	3
41	13917600	SHOE CONTACT PLATE PIN	1
42	3CU16600	CONDUCTION AUXILIARY PLATE	1
43	1AQ27400	SHOE CONTACT PLATE (1) ASSY	1
44	61914026	SHOE CONTACT PLATE (1) ASSY S.S	1
45	1AM20300	SHOE PLATE SPRING	1
46	1AM20200	ACCESSORY SHOE	1
47	1AWB6400	SHOE CONTACT ASSY	1
48	1AW20800	C. LCD WINDOW	1
1-48	1AWB6100	TOP COVER ASSY	1

The parts names with * mark is not supplied as a repair parts.



	PARTS No.	DESCRIPTION	QTY
1	17416600	FILM CHECK WINDOW	1
2	2DCA2200	DATE CONTACT HOLDER ASS'Y	1
3	69115076	DATE CONTACT HOLDER ASS'Y S.S	2
4	2DA24000	MULTI MODULE UNIT	1
5	66001173	MULTI MODULE UNIT S.S	2
6	2DDB2100	MODE FPC ASS'Y	1
7	69113076	MODE FPC ASS'Y S.S	4
8	2DD12100	LED MOQUETTE	1
9	2DC12700	D. MOQUETTE (5)	2
10	2DC12800	D. MOQUETTE (6)	2
11	2DA21800	BACK COVER CAP	2
12	2DC10900	MODULE INSULATION SHEET	1
13	2DA22100	MODE BUTTON	1
14	2DC10400	D. RUBBER (2)	1
15	2DD11700	BATTERY CAP SCREW SOCKET	1
16	*	BACK COVER (D)	1
17	2DA22500	MODE BUTTON COVER MG	2
18	2DA22300	MODE BUTTON COVER SHAFT	2
19	2DA22400	MODE BUTTON COVER SPRING	1
20	2DD10600	MODE BUTTON COVER	1
21	2DD10500	BACK COVER PANEL	1
22	2DA22600	M. INDICATION WINDOW	1
23	66001166	HINGE SHAFT RELEASE PIN	1
24	1AW19000	HINGE SHAFT (UPPER)	1
25	1AW19200	HINGE SHAFT SPRING	1
26	*	LITHIUM BATTERY (CR2025)	2
27	2DC10500	D. RUBBER (3)	1
28	2DD11800	BATTERY COVER	1
29	1AH16600	BATTERY COVER SCREW	1
30	69113076	BATTERY CONTACT HOLDER ASS'Y S.S	3
31	3AQ54200	SELF-TIMER SWITCH	1
32	3AQ40400	SELF-TIMER LEVER ASS'Y	1
33	2DD12300	BATTERY CHAMBER LIGHT-SHIELD MOQUETTE	1
34	2DDB1100	BATTERY CONTACT HOLDER ASS'Y	1
35	2DC11200	D. MOQUETTE (2)	1
36	2DC12100	D. LIGHT-SHIELD SHEET	1
37	*	BACK COVER (D) REINFORCEMENT PLATE	1
38	69113576	BACK COVER (D) REINFORCEMENT PLATE S.S	4
39	2DD12400	D. MOQUETTE (1)	1
40	2DDB4000	PRESSURE PLATE (D) ASS'Y	1
41	69115076	WINDOW MOQUETTE BASE S.S	2
42	1AW18300	BACK COVER LOCK CLAW	1
43	1AW18400	CARTRIDGE SPRING	1
44	66001152	CARTRIDGE SPRING S.S	2
45	17417200	FILM CHECK WINDOW MOQUETTE	1
46	66001152	WINDOW MOQUETTE BASE S.S	2
47	2DD10400	WINDOW MOQUETTE BASE	1
48	2DC12200	COMPILED DATE IMPRINT SW SEAL	1
49	1AA16300	BACK COVER ROLLER (1)	1
50	1AQ19700	BACK COVER FILM PRESSURE	1
51	1AQ19600	ROLLER (2) SPRING	1
52	1AQ19500	ROLLER (2) LEVER	1
53	1AA16800	BACK COVER FILM PRESSURE ROLLER	1

The parts names with * mark are not supplied as a repair parts.