


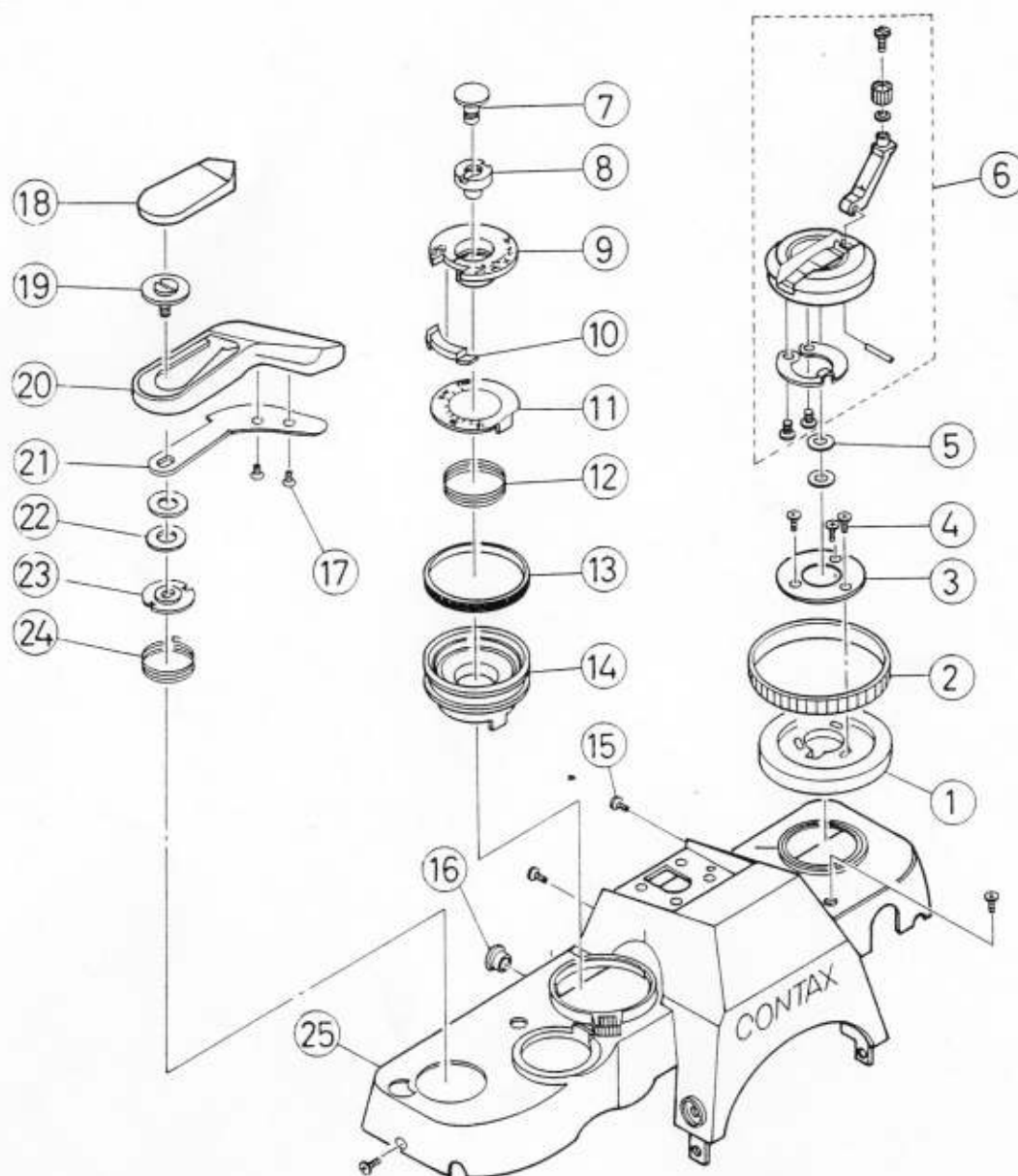
CONTAX

159 MM

ASSEMBLING CHART

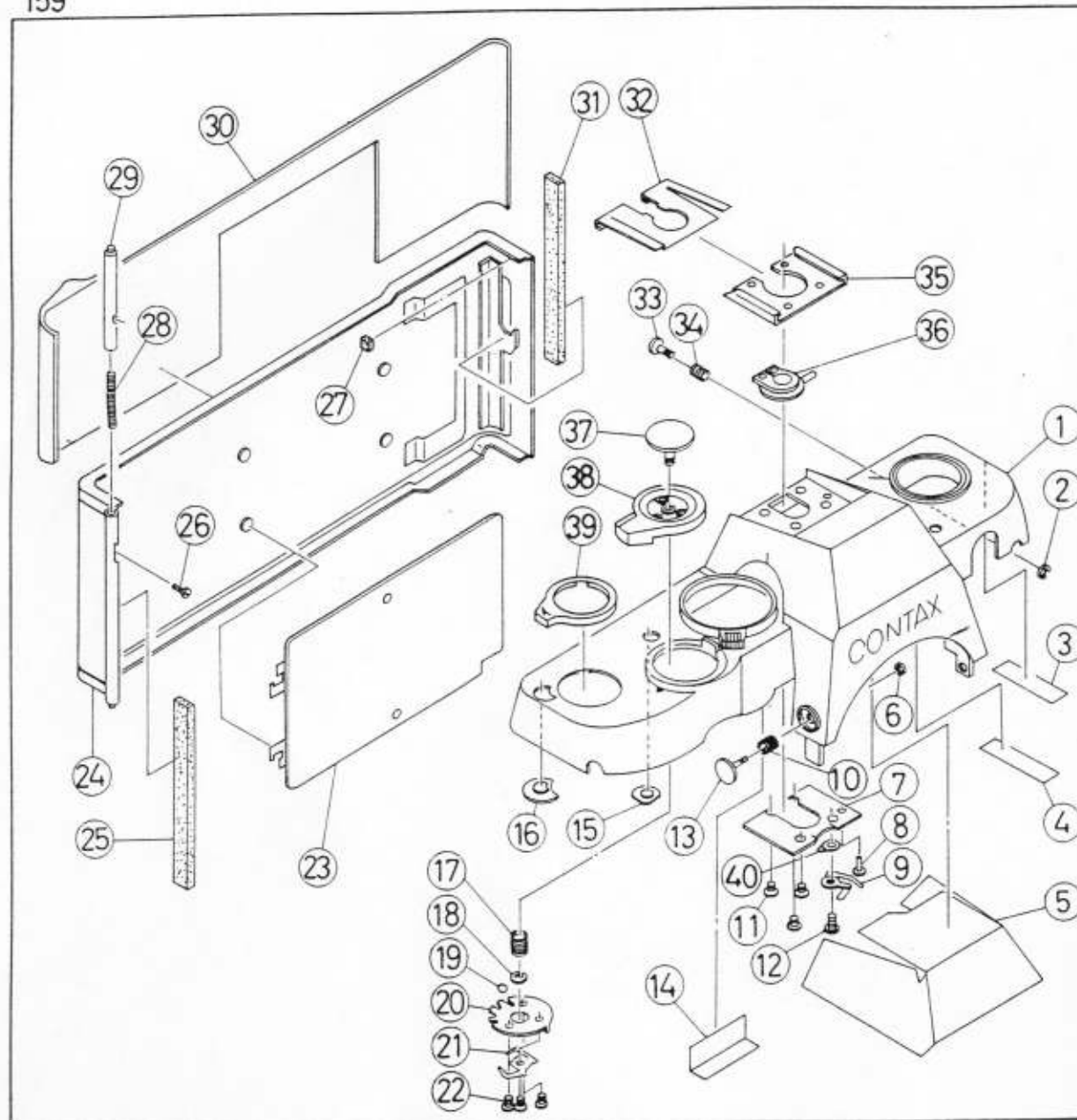


 KYOCERA CORPORATION
YASHICA DIVISION JAPAN

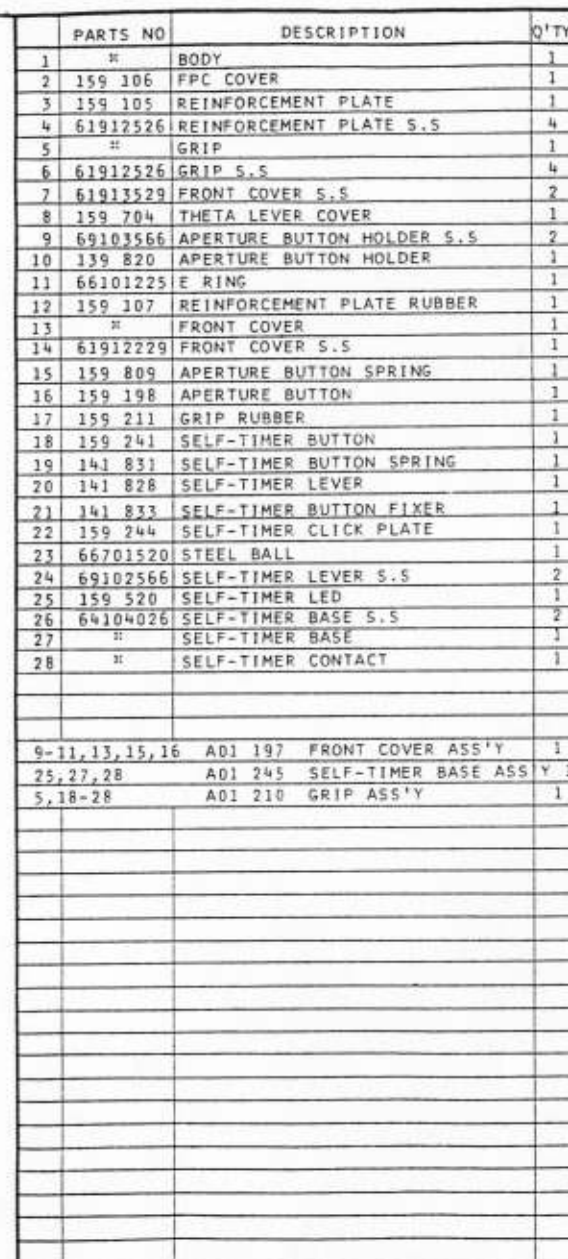


PARTS NO.	DESCRIPTION	Q'TY
1	159 365 S. DIAL	1
2	139 366 S. BAND	1
3	139 367 S. REINFORCEMENT PLATE	1
4	61913529 S. REINFORCEMENT PLATE S.S	3
5	60123112 REWIND SHAFT WASHER	2
6	A01 368 REWIND KNOB ASS'Y	1
7	141 266 ASA NAME PLATE DRESS SCREW	1
8	141 265 ASA NAME PLATE S.S	1
9	159 309 EXP. COMPENSATION DIAL	1
10	159 314 ISO WINDOW	1
11	159 310 ISO NAME PLATE	1
12	141 264 ASA SPRING	1
13	224 352 DIAL RUBBER	1
14	159 308 ISO DIAL	1
15	61912529 TOP COVER S.S	4
16	139 164 R. SOCKET DECORATING RING	1
17	69314066 W. LEVER PLATE S.S	2
18	159 602 W. LEVER COVER	1
19	159 610 W. LEVER S.S	1
20	159 601 W. LEVER	1
21	139 603 W. LEVER PLATE	1
22	60224110 W. LEVER SPRING POST WASHER	2
23	139 604 W. LEVER SPRING POST	1
24	139 606 W. LEVER REWIND SPRING	1
25	" TOP COVER (SEE PAGE NO.2)	1
1,2	A01 365 S. DIAL ASS'Y	1
9,10	A01 309 EXP. COMPENSATION DIAL ASS'Y	1
17,20,21	A01 601 W. LEVER ASS'Y	1

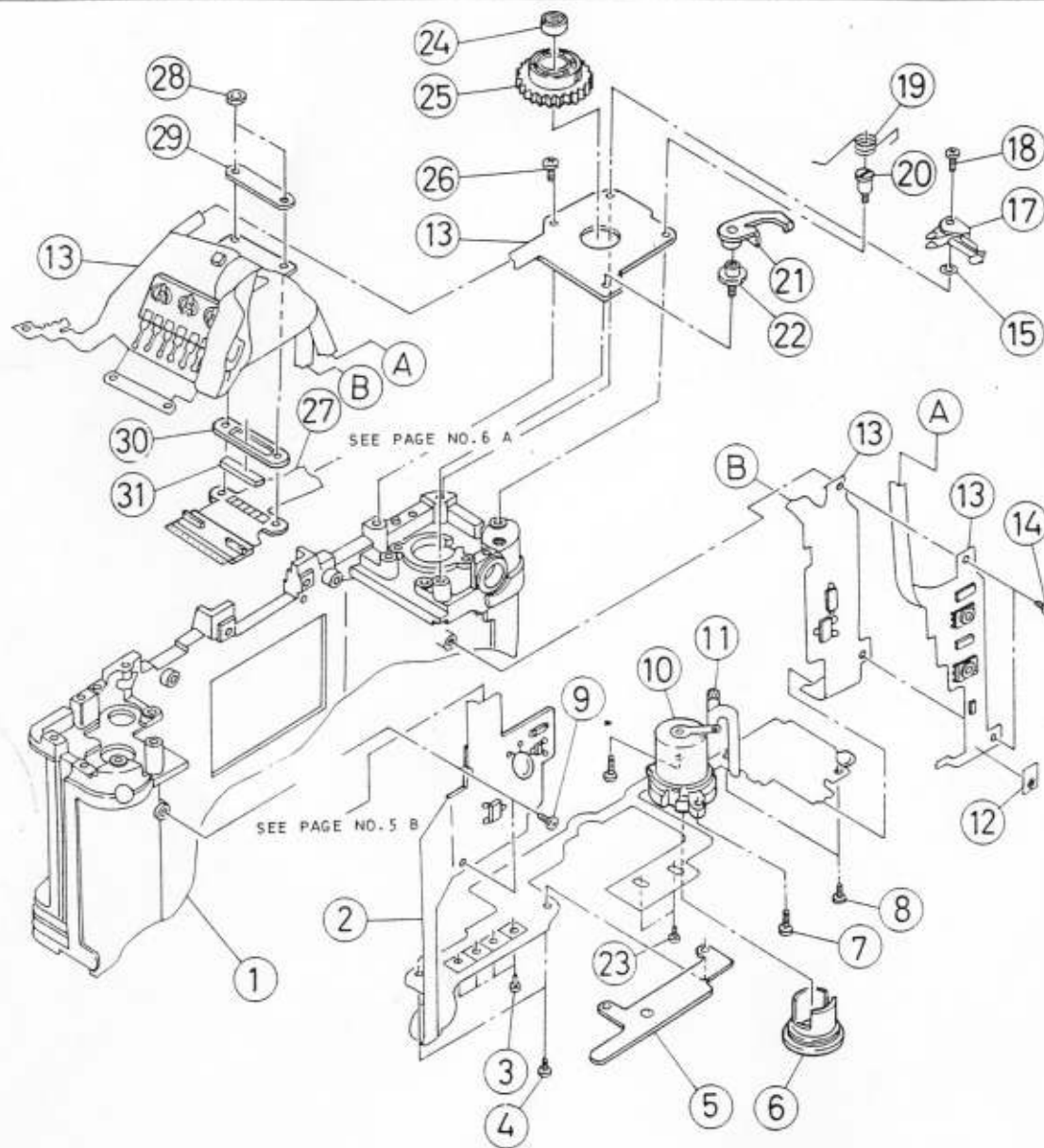
NOTE: PARTS WITH MARKED " ARE NOT AVAILABLE

[illegible]

NOTE: PARTS WITH MARKED " ARE NOT AVAILABLE

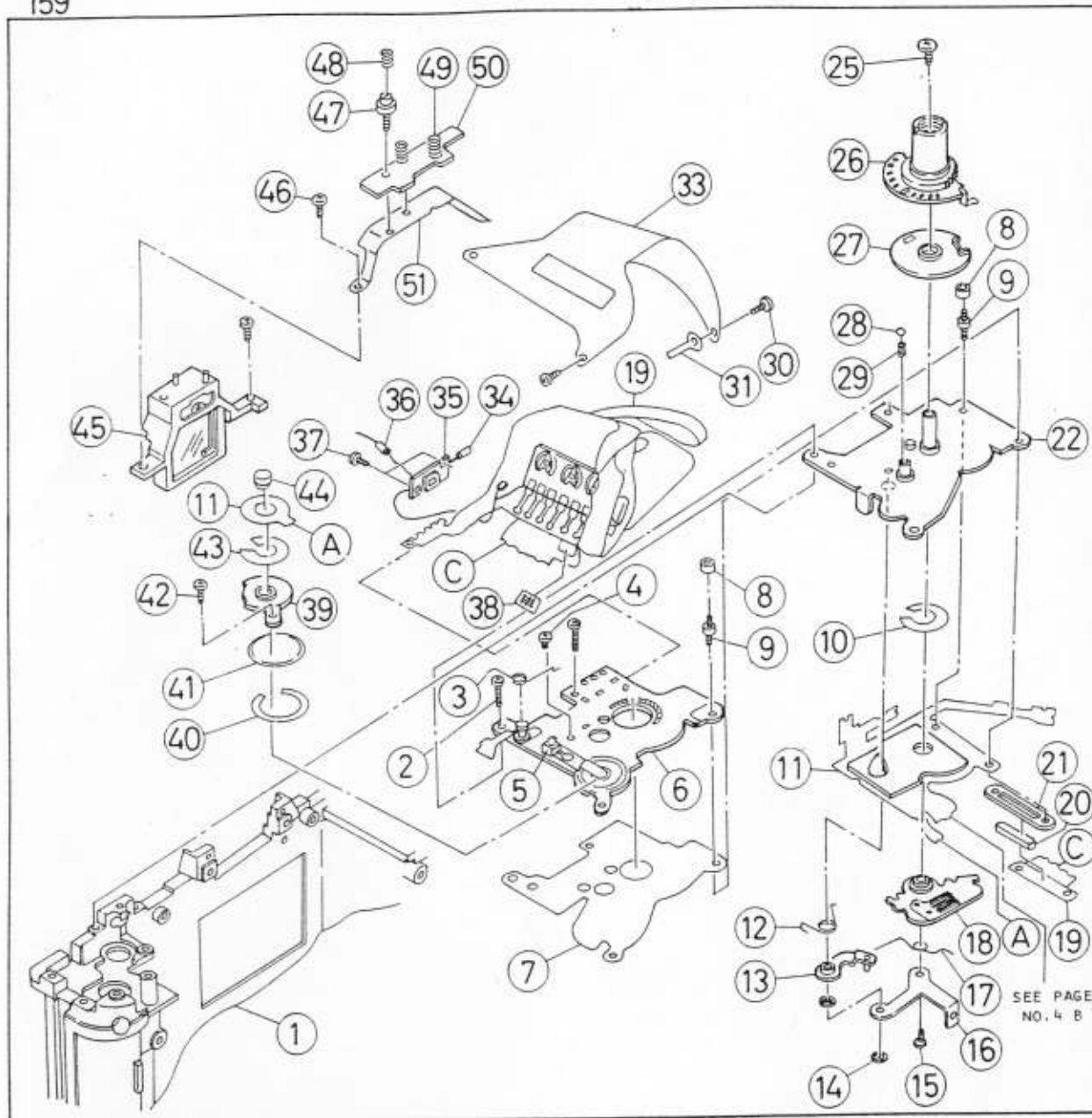


NOTE: PARTS WITH MARKED * ARE NOT AVAILABLE



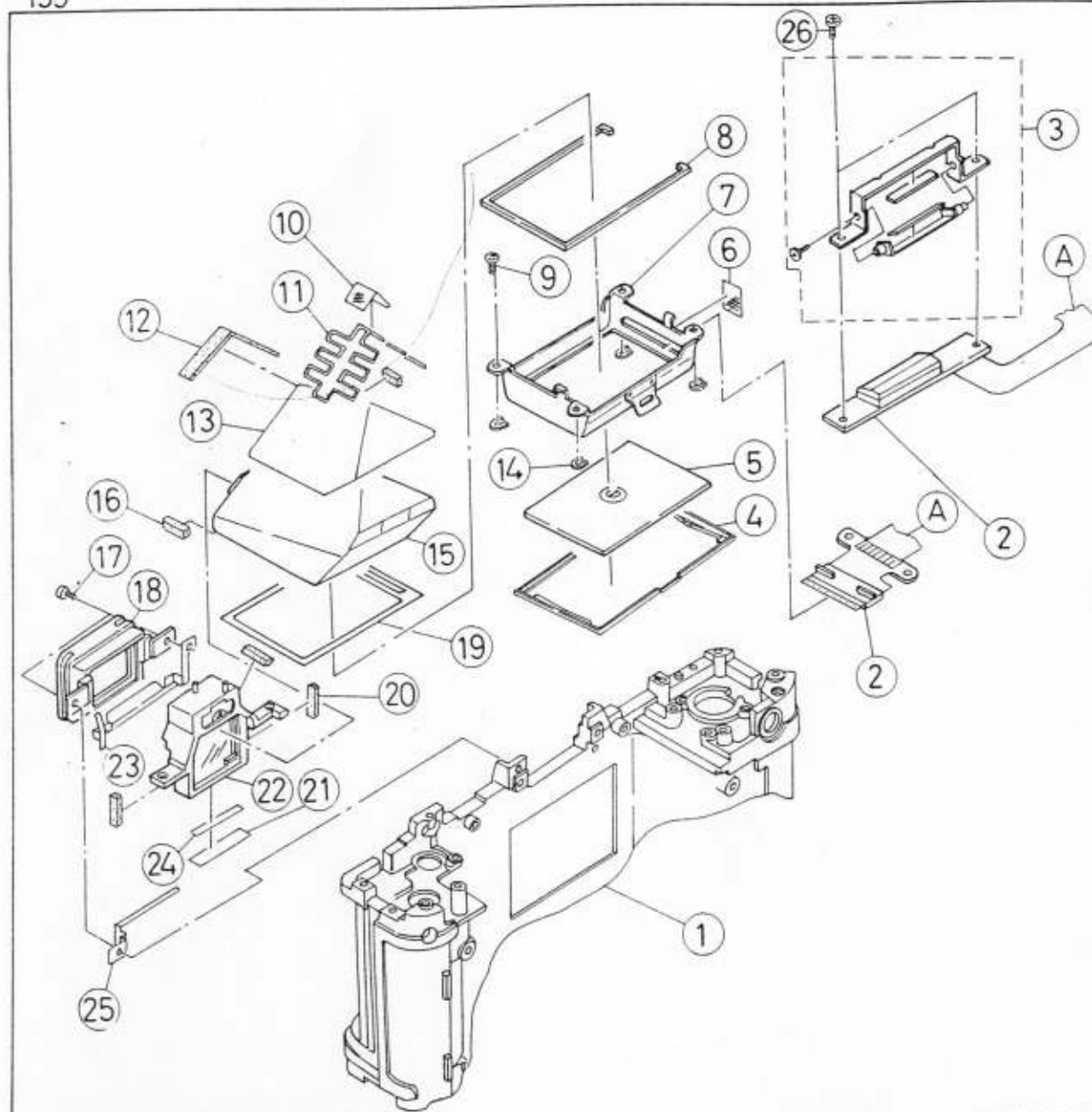
	PARTS NO	DESCRIPTION	Q'TY
1	"	BODY	1
2	---	FPC-2 ASS'Y(SEE PAGE NO.5)	1
3	159 196	CONNECTOR PIN	4
4	61913526	W.OBSTRACTION SHAFT SUPPORT S.S	2
5	159 693	W.OBSTRACTION SHAFT SUPPORT	1
6	A01 155	BATTERY CAP ASS'Y	1
7	61913526	BATTERY CASE ASS'Y S.S	2
8	63912022	FPC-1 S.S	2
9	63912022	FPC-2 S.S	2
10	A01 150	BATTERY CASE ASS'Y	1
11	139 115	D-LED	1
12	"	ACETATE CLOTH TAPE	1
13	---	AMPLIFIER ASS'Y(SEE PAGE NO.5)	1
14	63911526	FPC-1 S.S	2
15	131 396	TIME SWITCH WASHER	1
17	159 363	TIME SWITCH	1
18	63914026	TIME SWITCH S.S	1
19	139 360	S. CLICK SPRING	1
20	139 359	S. BASE S.S	1
21	A01 356	S. CLICK LEVER	1
22	139 355	S. CLICK SHAFT	1
23	63912022	FPC-2 S.S	2
24	139 348	REWIND SHAFT HOLDER NUT	1
25	A01 345	SHUTTER CLICK PLATE ASS'Y	1
26	63912022	S. BASE S.S	1
27	---	LED ASS'Y(SEE PAGE NO.6)	1
28	66511712	ELASTIC CONNECTOR NUT	2
29	159 591	ELASTIC CONNECTOR FIXER	1
30	159 590	ELASTIC CONNECTOR GUIDE	1
31	141 540	ELASTIC CONNECTOR	1

NOTE: PARTS WITH MARKED " ARE NOT AVAILABLE

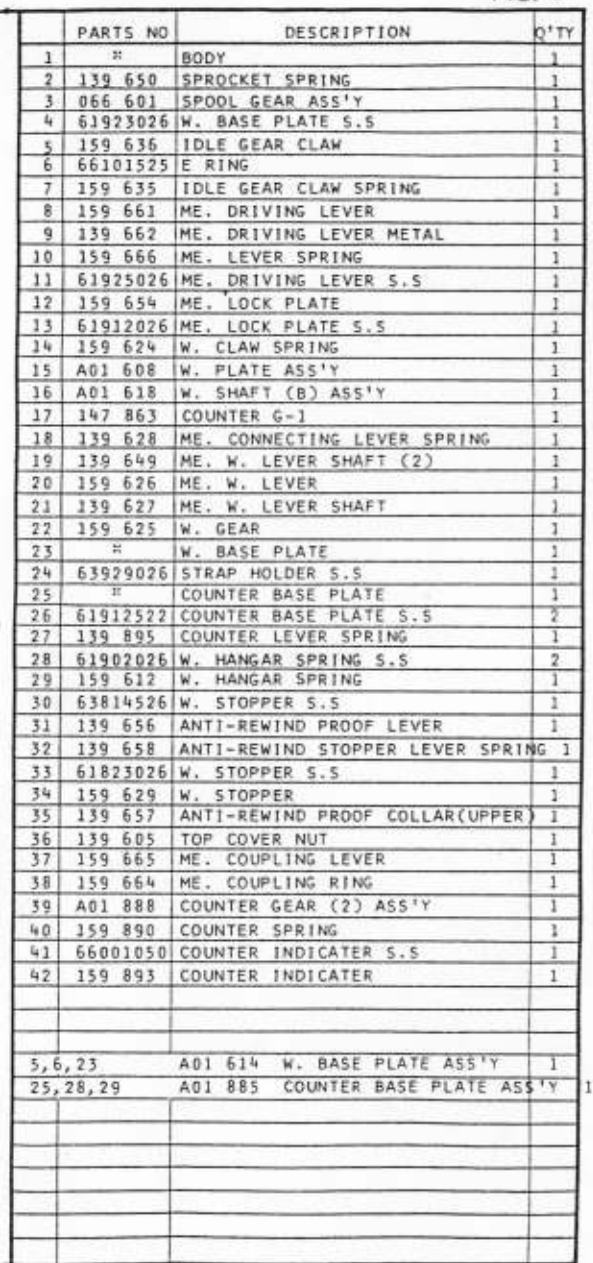


PARTS NO	DESCRIPTION	Q'TY
1	"	BODY
2	61914522	ISO BASE PLATE S.S
3	159 854	FCT SWITCH SPRING
4	61902026	ISO BASE S.S
5	352 522	B. CHECK LED
6	A01 515	ISO RESISTOR BASE ASS'Y
7	159 327	ISO INSULATION MYLAR
8	159 329	ISO BASE PLATE NUT
9	159 328	ISO BASE PLATE S.S
10	159 326	AE LOCK TAPE
11	A01 506	FPC-2 ASS'Y (SEE PAGE NO. 4)
12	159 223	M. SW CLICK LEVER SPRING
13	A01 220	M. SW CLICK LEVER ASS'Y
14	66101525	E RING
15	61913026	GRIP HOLDER S.S
16	159 212	GRIP HOLDER
17	159 217	B. CHECK SPRING
18	A01 214	MAIN SWITCH PLATE ASS'Y
19	---	AMPLIFIER ASS'Y (SEE PAGE NO. 4)
20	159 530	ISO ELASTIC CONNECTOR
21	159 594	ISO ELASTIC CONNECTOR GUIDE
22	"	ISO BASE PLATE
25	66001065	ISO DIAL SHAFT S.S
26	A01 306	ISO DIAL SHAFT ASS'Y
27	A01 303	ISO CONTACT BASE ASS'Y
28	66701520	STEEL BALL
29	159 321	EXP. COMPENSATION CLICK SPRING
30	61912022	FPC FIXER SHEET S.S
31	107 616	FPC SUPPORT
33	159 596	FPC FIXER SHEET
34	159 599	TUBE (3) (YELLOW)
35	"	SPD BASE
36	159 597	TUBE (1) (GREEN)
37	61912522	SPD BASE S.S
38	"	ACETATE CLOTH TAPE
39	159 315	RELEASE SWITCH BASE
40	159 316	RELEASE SWITCH WASHER
41	152 520	P.S SWITCH
42	63904026	RELEASE SWITCH BASE S.S
43	159 326	AE LOCK TAPE
44	159 307	RELEASE PIN
45	A01 880	EYE PIECE LENS HOLDER ASS'Y
46	63903522	EYE PIECE LENS HOLDER S.S
47	137 625	MODE SWITCH PLATE SHAFT
48	159 847	SPD GUARD SPRING
49	139 876	SHOE CONTACT SPRING
50	159 534	SYNCHRO BASE
4-7, 10-18, 22		A01 301 ISO BASE PLATE ASS'Y
		(SEE PAGE NO. 4)
19, 35		A01 505 AMPLIFIER ASS'Y
		(SEE PAGE NO. 4)

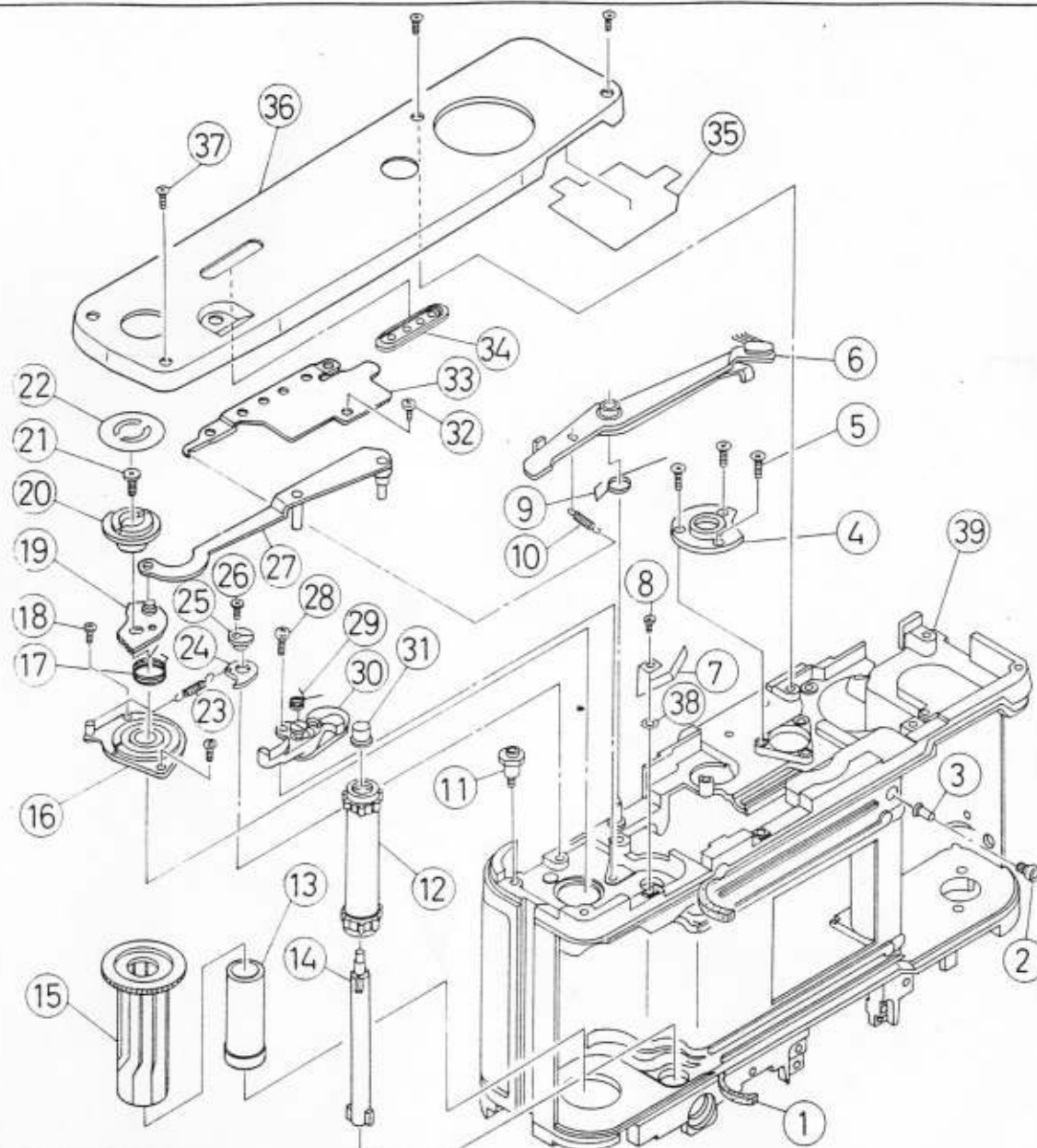
NOTE: PARTS WITH MARKED " ARE NOT AVAILABLE

[illegible]

NOTE: PARTS WITH MARKED # ARE NOT AVAILABLE

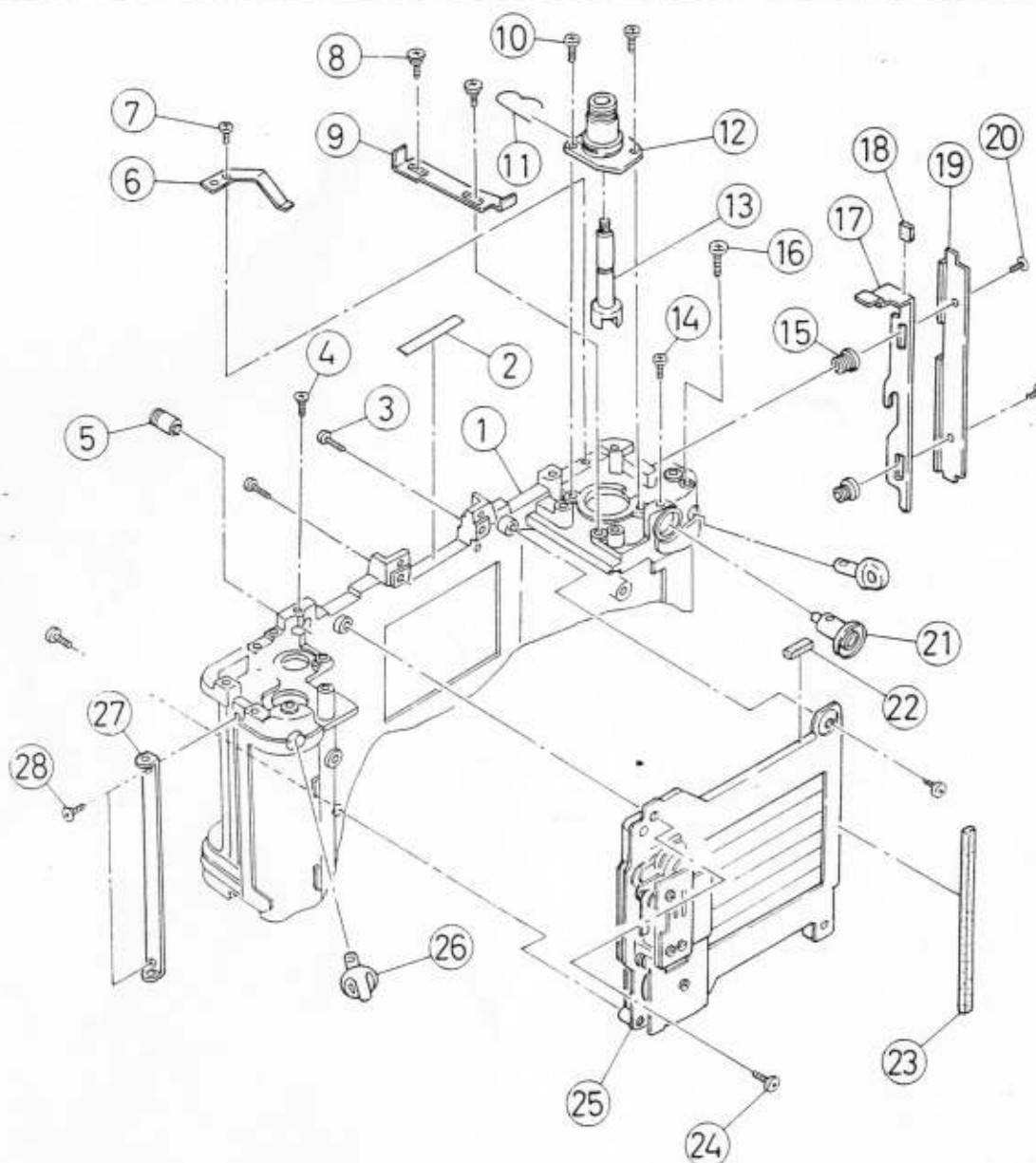


NOTE: PARTS WITH MARKED "X" ARE NOT AVAILABLE



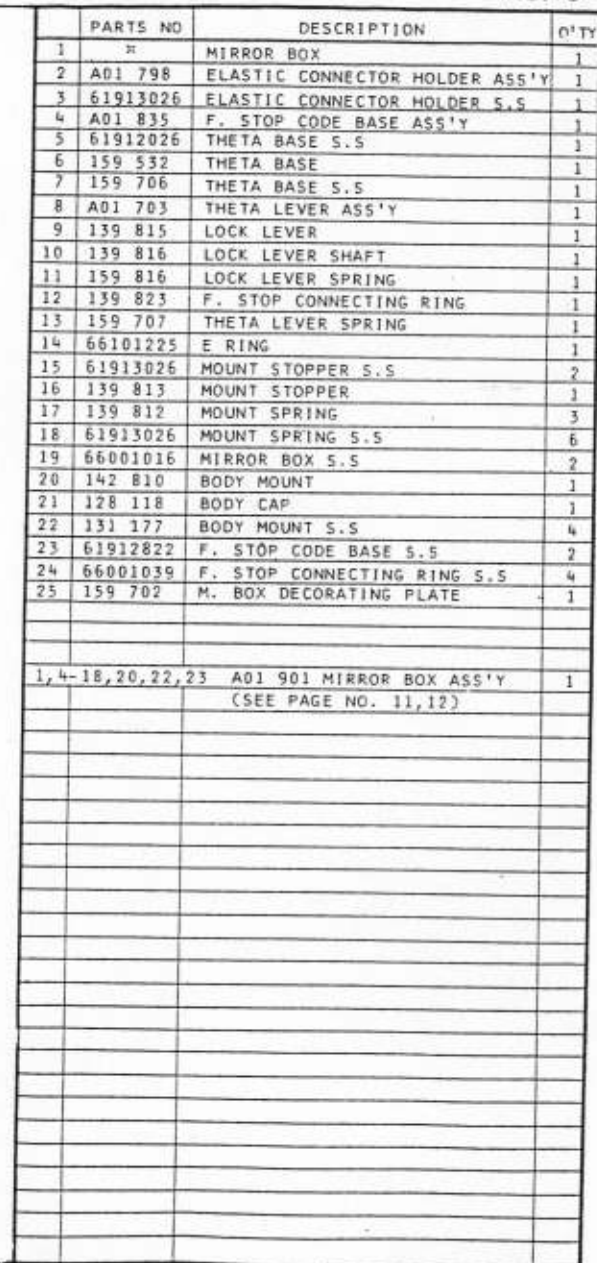
	PARTS NO	DESCRIPTION	Q'TY
1	139 106	BODY LIGHT-PROOF MOQUETTE	2
2	139 113	FILM GUIDE PIN	1
3	139 114	D-LED COVER	1
4	159 144	TRIPOD SOCKET	1
5	61824022	TRIPOD SOCKET S.S	3
6	A01 631	W. OBSTRUCTION LEVER ASS'Y	1
7	159 652	SPROCKET REVERSE SPRING	1
8	61912526	SPROCKET REVERSE SPRING S.S	1
9	139 691	W. OBSTRUCTION SPRING (B)	1
10	139 688	W. OBSTRUCTION SPRING (A)	1
11	139 158	WINDER FIXING PIN	1
12	159 370	SPROCKET	1
13	156 622	INSIDE SPOOL	1
14	159 647	SPROCKET SHAFT	1
15	159 641	OUTSIDE SPOOL	1
16	156 611	WINDING SHAFT HOLDER	1
17	152 622	WINDING SPRING	1
18	66001068	WINDING SHAFT HOLDER S.S	2
19	A01 686	SET CAM ASS'Y	1
20	159 679	MD. COUPLING	1
21	66001071	WINDING SHAFT (B) S.S	1
22	139 680	MD. LIGHT-PROOF PLATE	1
23	147 636	ANTI-REWIND PROOF CLAW SPRING	1
24	147 638	ANTI-REWIND PROOF CLAW	2
25	147 637	ANTI-REWIND PROOF CLAW COLLAR	1
26	61813526	ANTI-REWIND PROOF CLAW COLLAR S.S	1
27	A01 682	SM. SET LEVER ASS'Y	1
28	63912526	SPROCKET METAL S.S	1
29	159 677	OR STOP LEVER SPRING	1
30	A01 646	SPROCKET METAL ASS'Y	1
31	159 651	SPROCKET BUTTON	1
32	61913526	SM SET LEVER FIXER S.S	1
33	159 692	SM SET LEVER FIXER	1
34	159 194	CONNECTOR FRAME	1
35	139 195	BOTTOM COVER INSULATION SHEET	1
36	159 193	BOTTOM COVER	1
37	61812529	BOTTOM COVER S.S	3
38	60121810	SPROCKET REVERSE SPRING WASHER	1
39	"	BODY	1
34-36	A01 193	BOTTOM COVER ASS'Y	1

NOTE: PARTS WITH MARKED " ARE NOT AVAILABLE

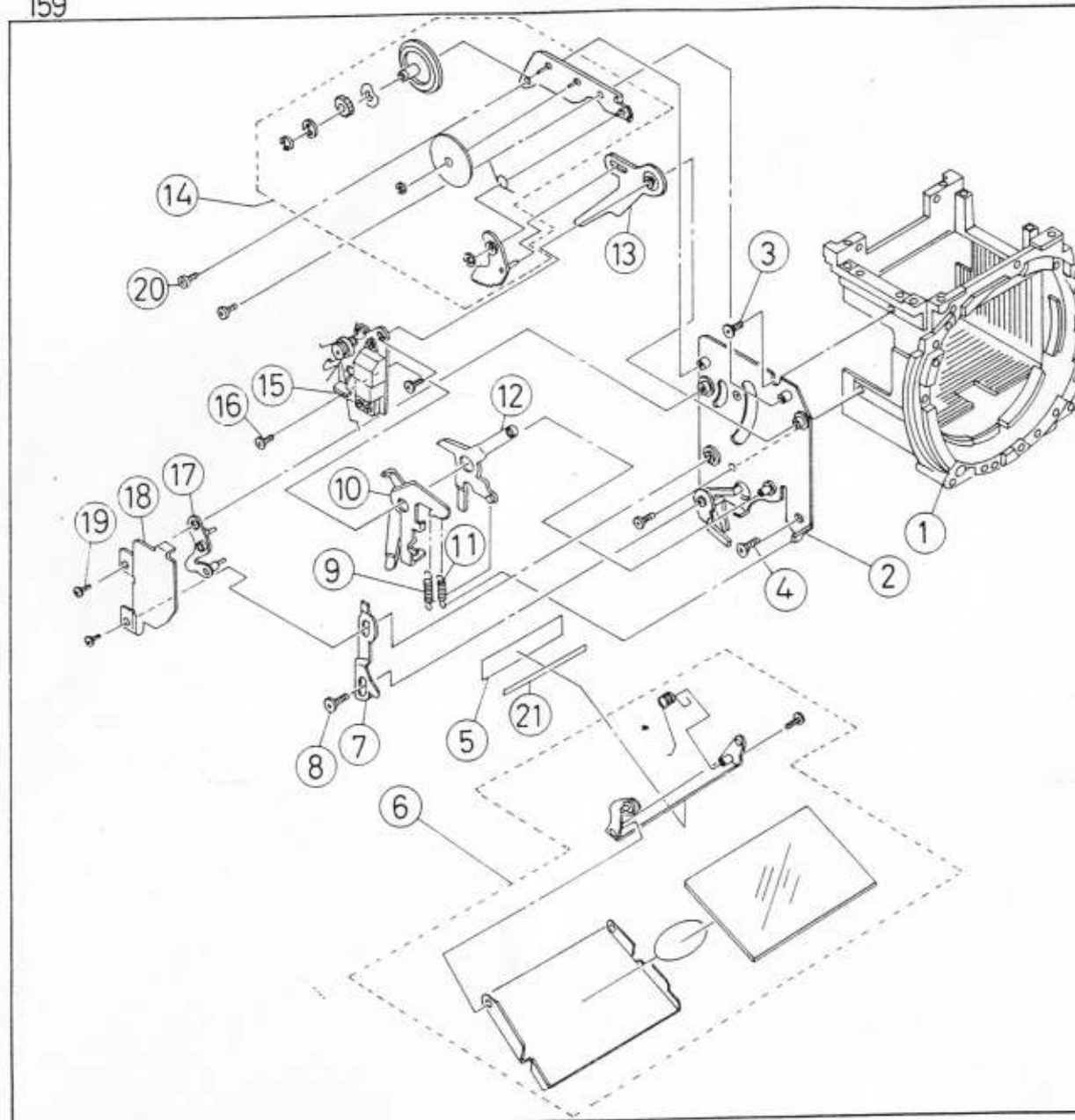


	PARTS NO	DESCRIPTION	Q'TY
1	"	BODY	1
2	159 883	DUST-PROOF TAPE	1
3	61927026	MIRROR BOX S.S	2
4	61812521	R. SOCKET S.S	1
5	065 183	R. SOCKET ASS'Y	1
6	139 121	LOCK PLATE SPRING	1
7	61912522	LOCK PLATE SPRING S.S	1
8	147 437	SR LEVER (3) SHAFT	2
9	159 352	S. LOCK LEVER	1
10	61924026	REWIND SHAFT HOLDER S.S	2
11	139 343	REWIND SHAFT SPRING	1
12	159 341	REWIND SHAFT HOLDER	1
13	159 342	REWIND SHAFT	1
14	61912522	SYNCHRO SOCKET S.S	1
15	131 118	BACK COVER LOCK PLATE SHAFT	2
16	63929026	STRAP HOLDER S.S	1
17	139 120	BACK COVER LOCK PLATE	1
18	159 119	BACK COVER LOCK PLATE MOQUETTE	1
19	159 117	BACK COVER LOCK PLATE COVER	1
20	61812529	BACK COVER LOCK PLATE COVER S.S	2
21	A01 134	SYNCHRO SOCKET ASS'Y	1
22	131 710	MIRROR CUSHION	1
23	139 787	MIRROR CUSHION	1
24	61924022	SHUTTER S.S	3
25	159 201	COMPLETE SHUTTER	1
26	061 633	STRAP HOLDER ASS'Y	2
27	139 148	HINGE SHAFT HOLDER	1
28	61813022	HINGE SHAFT HOLDER S.S	2

NOTE: PARTS WITH MARKED " ARE NOT AVAILABLE

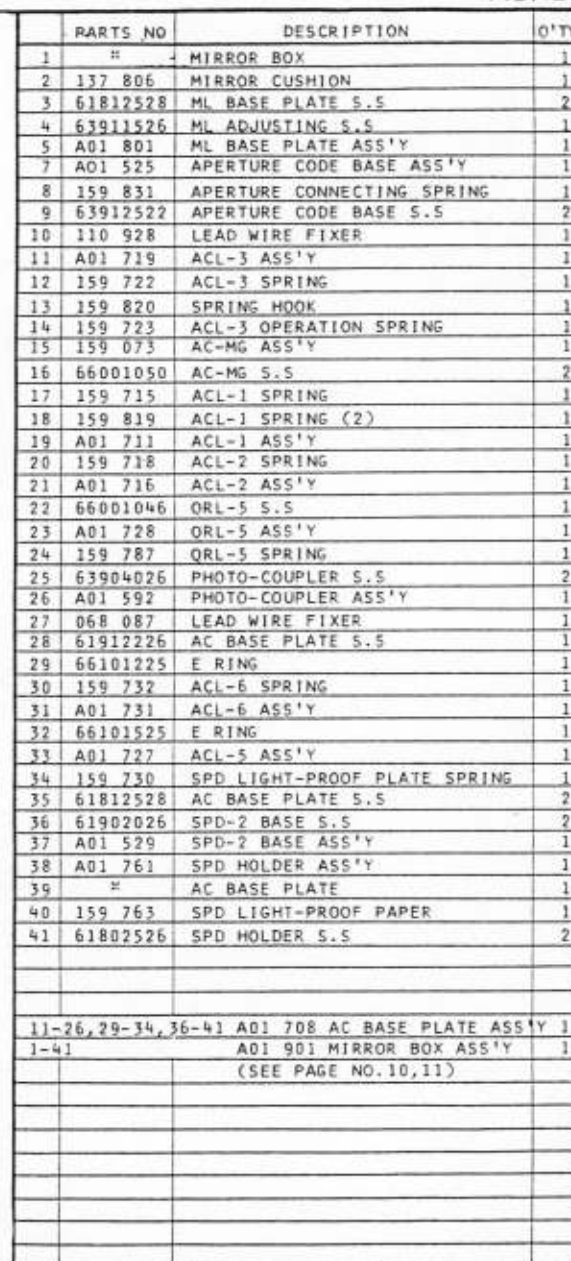


NOTE: PARTS WITH MARKED " ARE NOT AVAILABLE



PARTS NO	DESCRIPTION	Q'TY
1	MIRROR BOX	1
2	MC. BASE PLATE	1
3 61812528	MC. BASE PLATE S.S	2
4 61812228	MC. BASE PLATE S.S	1
5 159 878	S. LIGHT-PROOF PLATE	1
6 065 585	MIRROR FRAME ASS'Y	1
7 159 776	MCL-6	1
8 66001050	MCL-6 S.S	1
9 159 772	MC. DRIVING SPRING	1
10 A01 766	MCL-1,2 ASS'Y	1
11 159 773	MC. RESTORE SPRING	1
12 A01 771	MCL-3 ASS'Y	1
13 159 774	MCL-5	1
14 159 071	GOVERNOR ASS'Y	1
15 159 075	R-MG ASS'Y	1
16 66001050	R-MG S.S	2
17 065 214	MCL-4 ASS'Y	1
18 159 781	MC. LIGHT-PROOF PLATE	1
19 61902026	MC. LIGHT-PROOF PLATE S.S	2
20 61902026	GOVERNOR S.S	2
21 159 879	S. LIGHT-PROOF TAPE	1
2,7-13,15,16	A01 765 MC. BASE PLATE ASS'Y	1
1-4,6-20	A01 901 MIRROR BOX ASS'Y (SEE PAGE NO.10,12)	1

NOTE: PARTS WITH MARKED " " ARE NOT AVAILABLE



NOTE: PARTS WITH MARKED * ARE NOT AVAILABLE

Scan by Equipphoto

No commercial use allowed