

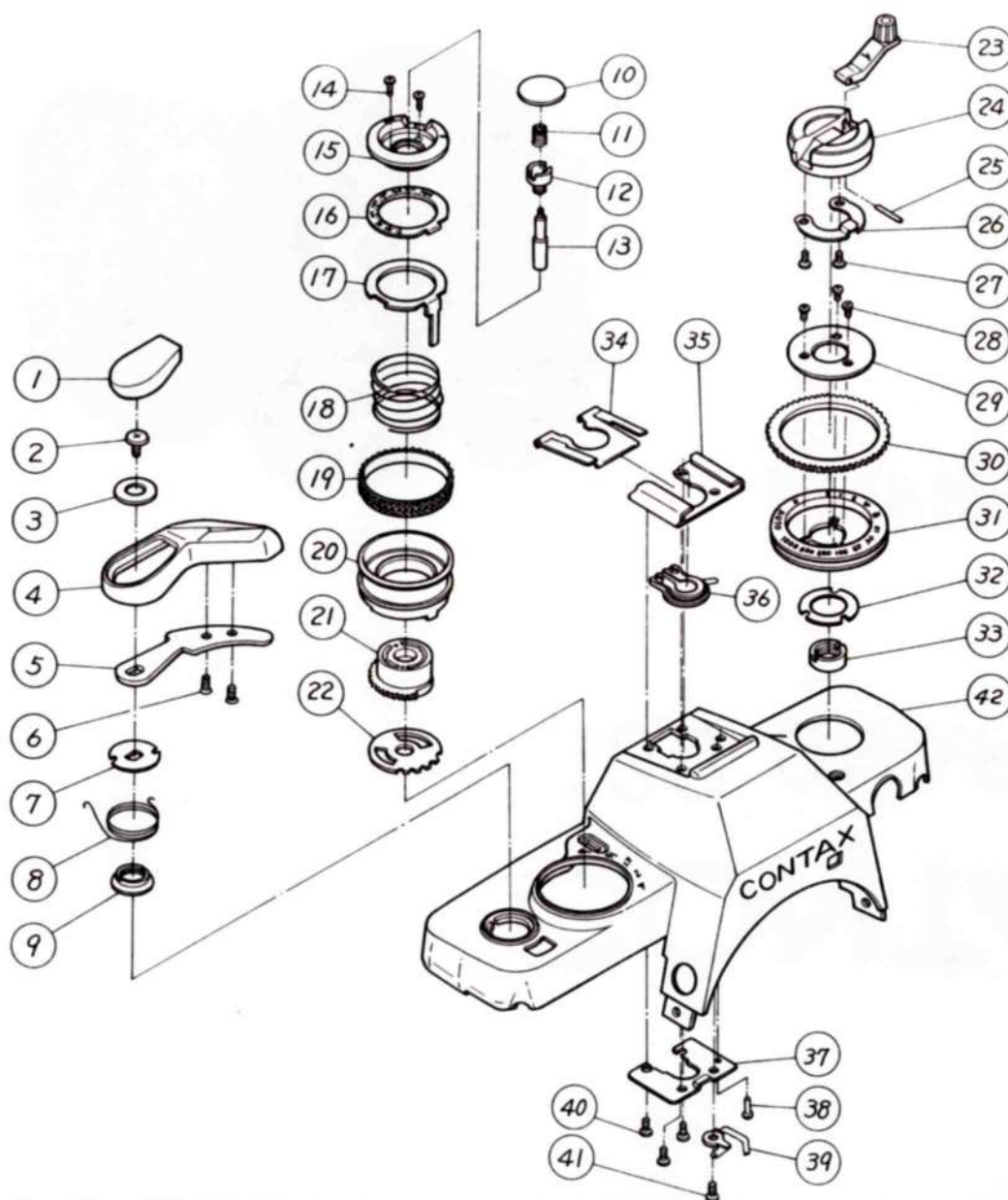
CONTAX

139 QUARTZ

ASSEMBLING CHART



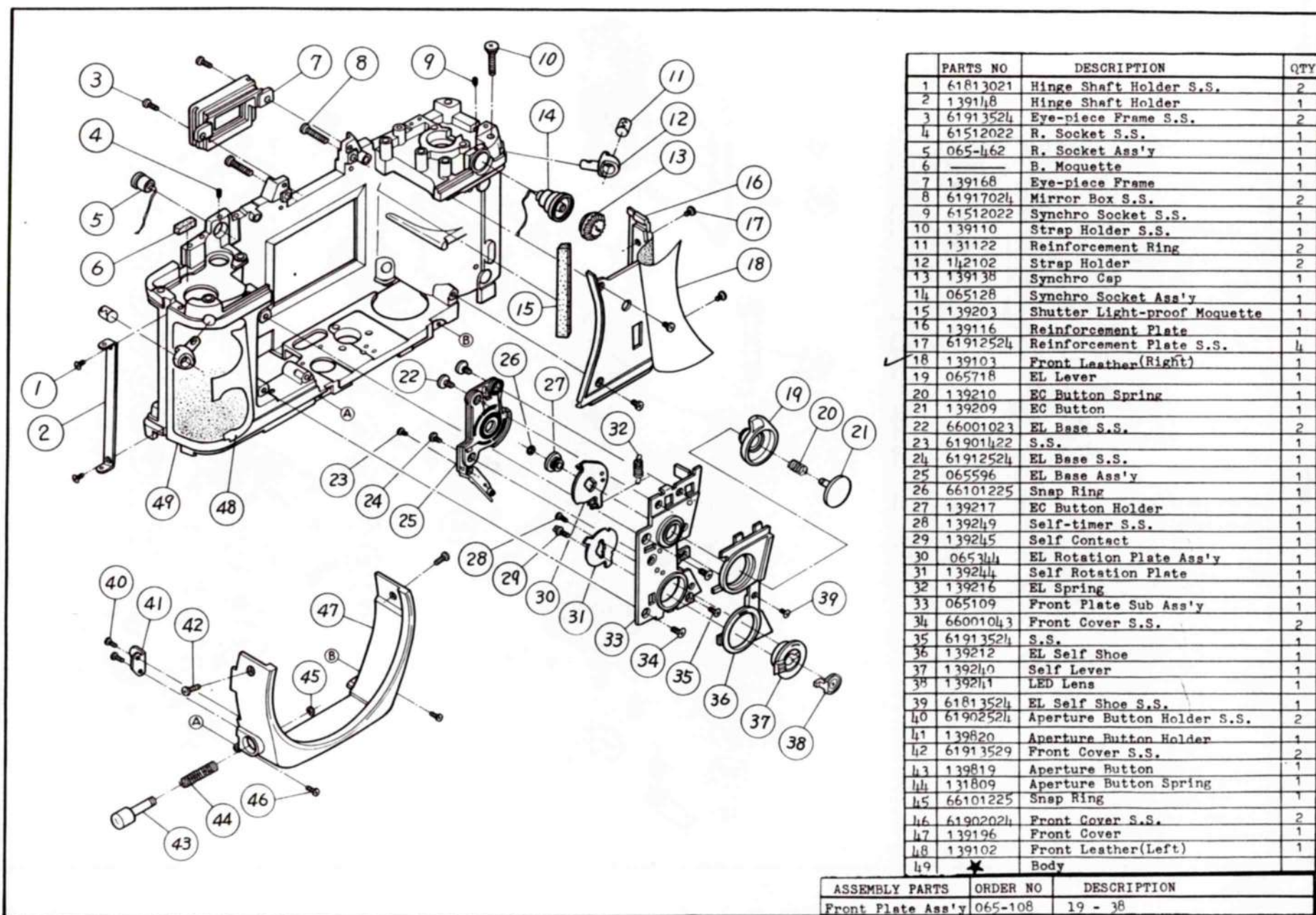
YASHICA CO., LTD.
T O K Y O J A P A N



	PARTS NO	DESCRIPTION	QTY
1	139602	W Lever Cover	1
2	66001037	W Lever S.S.	1
3	60354113	W Lever Washer	1
4	139601	W Lever	1
5	139603	W Lever Plate	1
6	69313566	W Lever Plate S.S.	2
7	139604	W Lever Spring Post	1
8	139606	W Lever Rewind Spring	1
9	139605	P Cover Fixer	1
10	139311	Release Button	1
11	139313	Release Spring	1
12	139306	ASA Shaft Stopper	1
13	139307	Release Shaft	1
14	139249	Self S.S.	2
15	139309	ASA Indicator Plate	1
16	139310	ASA Dial Plate	1
17	139375	ASA Dial Stopper	1
18	139312	ASA Spring	1
19	224352	Dial Rubber	1
20	139308	ASA Ring	1
21	139305	ASA Change Gear	1
22	139318	Corrective Click Plate	1
23	139369	Crank Arm Ass'y	1
24	139368	Rewind Knob	1
25	66708300	Crank Arm Pin	1
26	139373	Crank Arm Spring	1
27	61912224	Crank Arm Spring S.S.	2
28	61912529	S. Reinforcement Plate S.S.	3
29	139367	S. Reinforcement Plate	1
30	139366	S. Band	1
31	139365	S. Dial	1
32	139363	S. Dial Plate (Select)	1
33	139348	Rewind Shaft Holder Nut	1
34	139178	Shoe Plate Spring	1
35	139169	Accessory Shoe	1
36	065461	Shoe Contact Ass'y	1
37	139180	Shoe Reinforcement Plate	1
38	139176	Shoe Contact Plate Pin	1
39	139174	Shoe Contact Plate(1) Ass'y	1
40	61913022	Shoe Reinforcement Plate S.S.	3
41	61914024	Shoe Contact Plate S.S.	1
42	★	Top Cover	1

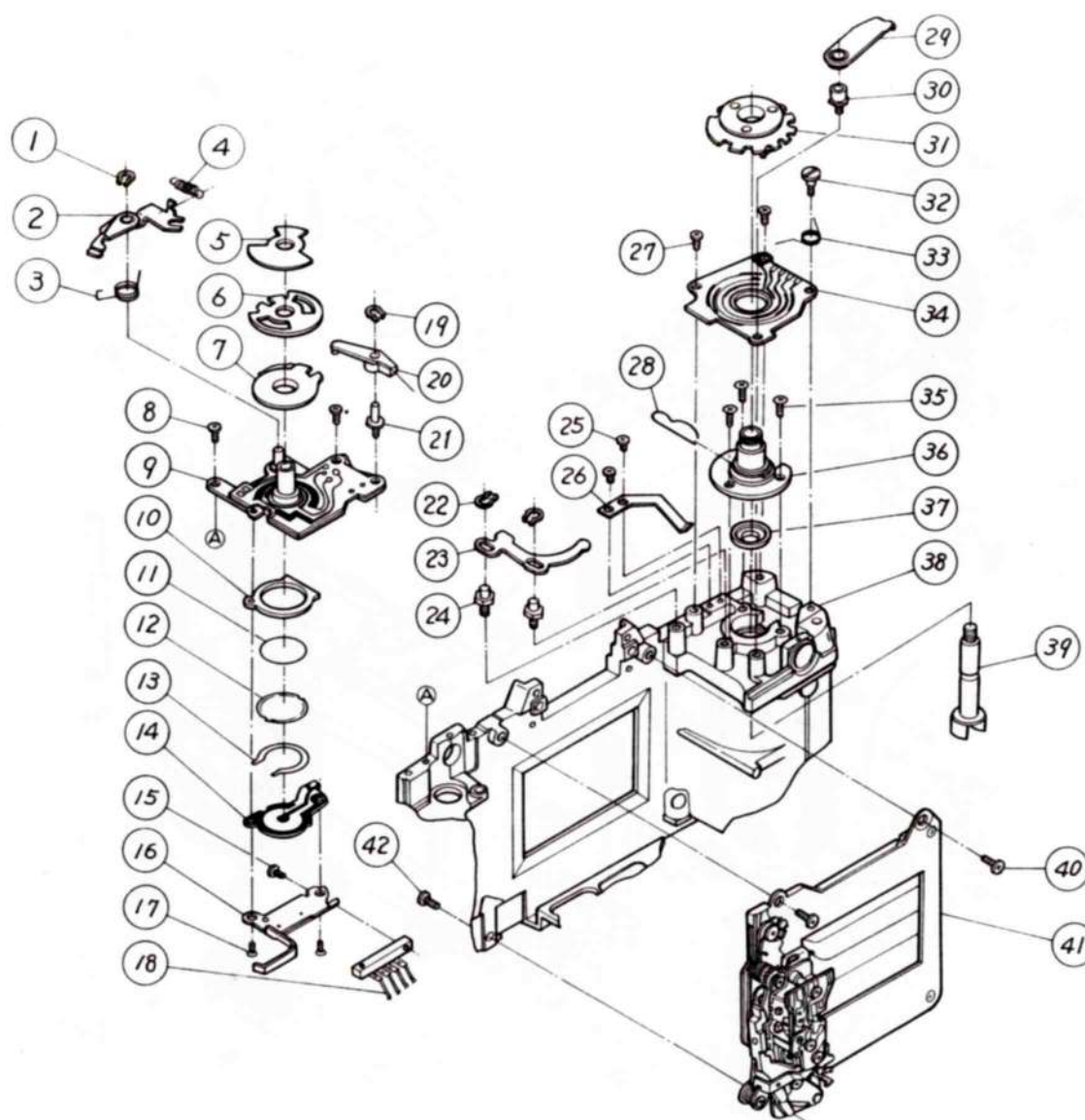
ASSEMBLY PARTS	ORDER NO.	DESCRIPTION
Top Cover Ass'y	065-161	34 - 42
		(See page No. 9)
		1 - 18 20 - 23
Rewind Knob Ass'y	065920	23 - 27

NOTE : (Parts with marked "★" are not Available)



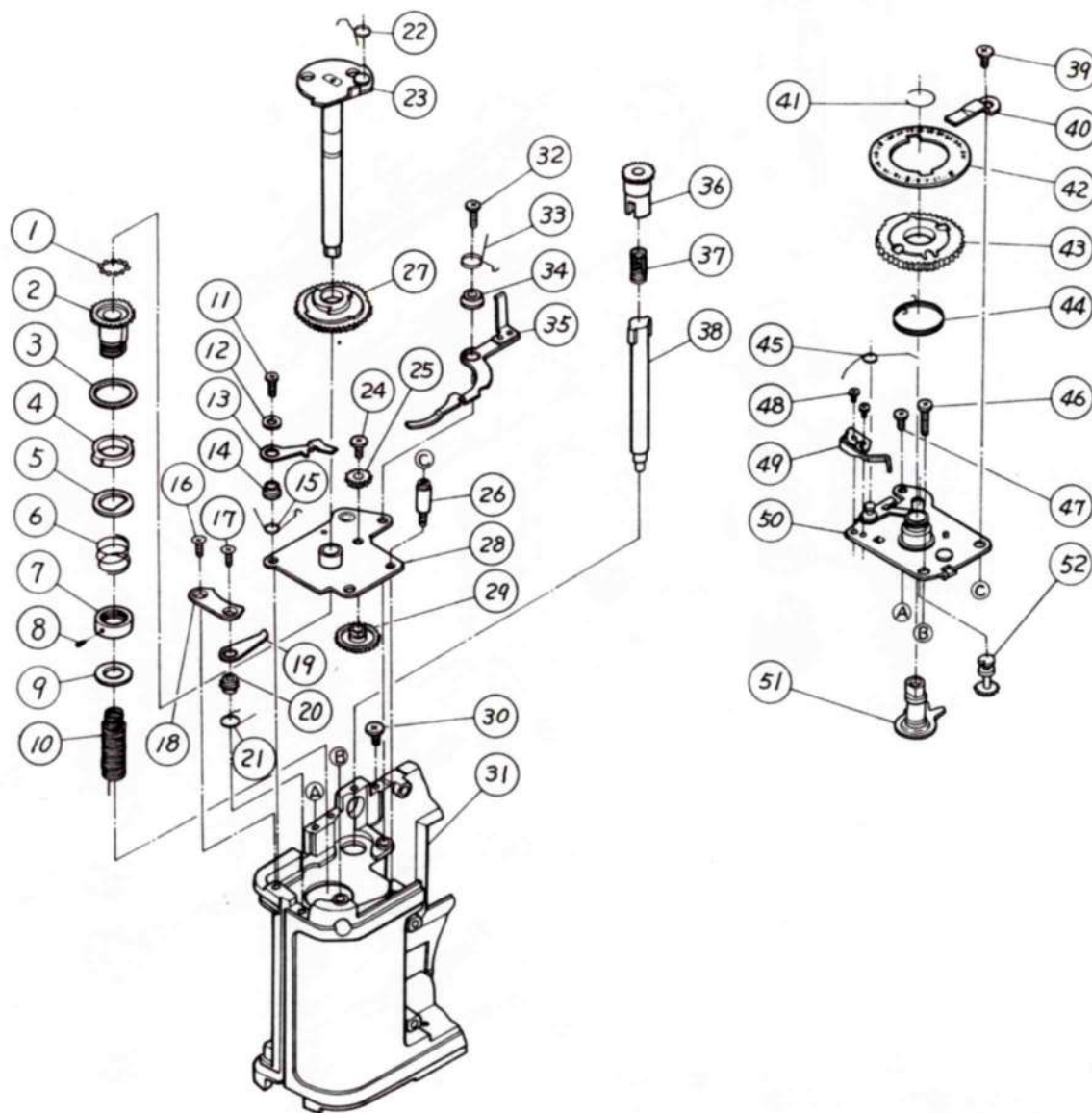
NOTE : (Parts with marked "★" are not Available)

No.2



	PARTS NO	DESCRIPTION	QTY
1	6617202h	Snap Ring	1
2	065715	Correction Lock Lever Ass'y	1
3	139327	Correction Click Lever Spring	1
4	139328	Correction Intermediate Lever Sp.	1
5	139332	Corrective Lever Guide	1
6	139319	Corrective Lock Plate	1
7	★	ASA Contact Plate Ass'y	1
8	61913022	ASA Base Plate S.S.	2
9	139033	ASA Base Plate Ass'y	1
10	139315	P. Base Holder	1
11	131814	Check Insulating Plate	1
12	131509	P.S. Switch Washer	1
13	131815	Check Switch Washer	1
14	139314	Release Base	1
15	6190352h	Combination Connector S.S.	1
16	★	EL-R Base Plate Ass'y	1
17	61803022	EL-R Base Plate S.S.	2
18	139339	Combination Connector	1
19	6617202h	Snap Ring	1
20	139324	Corrective Intermediate Lever	1
21	139326	Corrective Intermediate Lever Shaft	1
22	6617202h	Snap Ring	2
23	139352	S. Lock Lever	1
24	139350	S. Lock Lever Guide	2
25	6191222h	Lock Plate Spring S.S.	2
26	139121	Lock Plate Spring	1
27	61912522	Shutter Base S.S.	2
28	139343	Rewind Shaft Spring	1
29	065302	S. Click Lever Ass'y	1
30	139355	S. Click Shaft	1
31	139032	Shutter Click Plate Ass'y	1
32	139359	Shutter Base S.S.	1
33	139360	S. Click Spring	1
34	139344	Shutter Base	1
35	6192402h	Rewind Shaft Holder S.S.	3
36	139341	Rewind Shaft Holder	1
37	139349	Rewind Shaft Light-Proof Ring	1
38	★	Body	1
39	139342	Rewind Shaft	1
40	6192402h	Shutter S.S.	2
41	139201	Complete Shutter	1
42	6192402h	Shutter S.S.	1

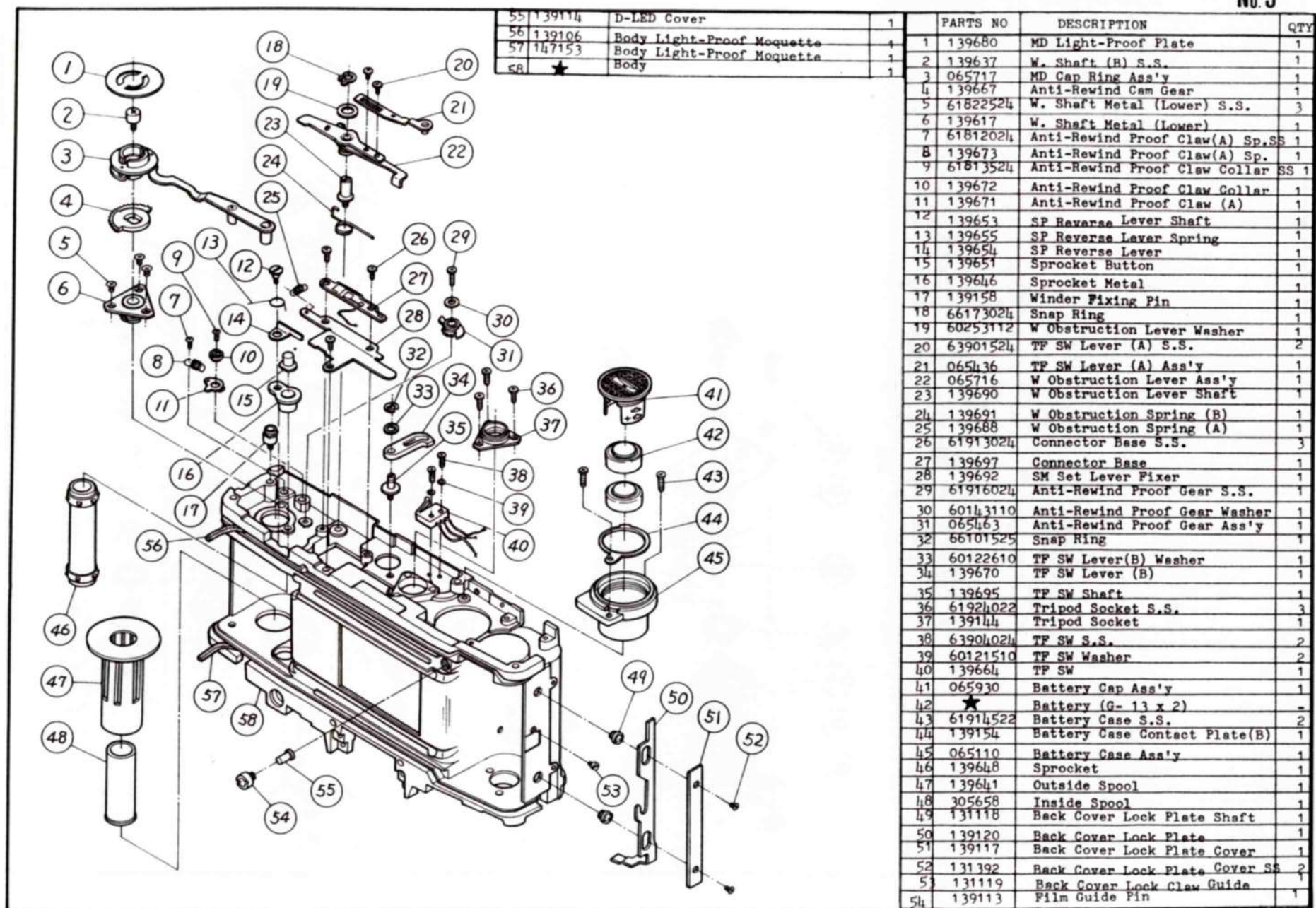
NOTE : (Parts with marked "★" are not Available)



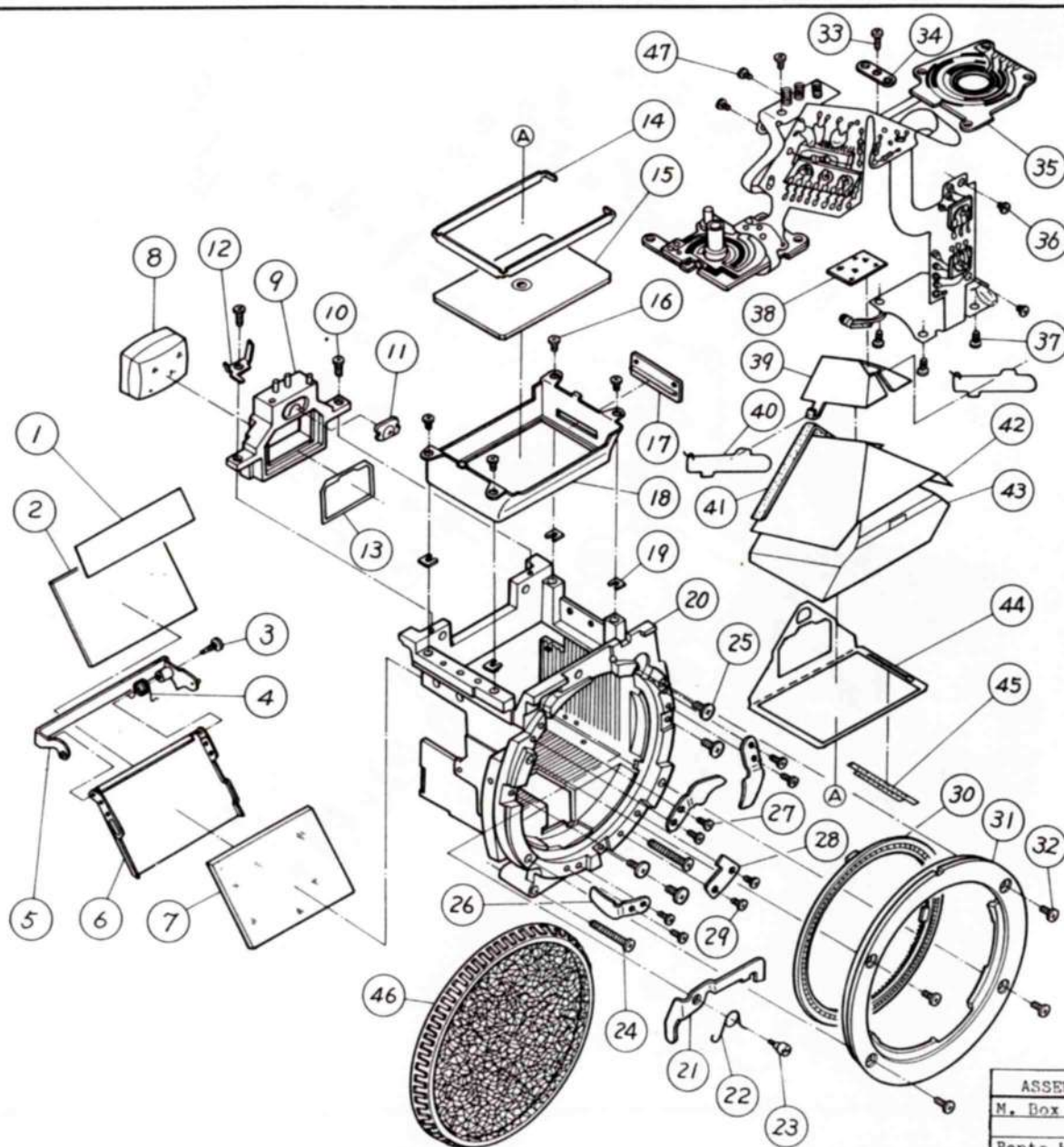
	PARTS NO	DESCRIPTION	QTY
1	66701620	Steel Ball	11
2	139635	Spool Gear	1
3	139674	Spool Gear Washer	1
4	139639	Friction Plate	1
5	139640	Friction Washer	1
6	139638	Friction Spring	1
7	139636	Spool Gear Nut	1
8	62501424	Spool Gear Nut S.S.	1
9	60284110	Washer	1
10	139619	W Shaft Rewind Spring	1
11	61926024	ME-W Lever S.S.	1
12	60122110	ME-W Lever Washer	1
13	139626	ME-W Lever	1
14	139627	ME-W Lever Shaft	1
15	139628	ME Connecting Lever Sp.	1
16	61823524	W Stopper S.S.	1
17	61824524	W Stopper S.S.	1
18	139629	W Stopper	1
19	139656	Anti-Rewind Proof Lever	1
20	139657	Anti-Rewind Proof Collar(Upper)	1
21	139658	Anti-Rewind Stopper Lever Sp.	1
22	139624	W Claw Spring	1
23	065293	W Shaft (B) Ass'y	1
24	66001039	Idle Gear (A) S.S.	1
25	139630	Idle Gear (A)	1
26	139615	W Base Plate Pole	1
27	139625	W Gear	1
28	065200	W Base Plate Ass'y	1
29	139631	Idle Gear (B)	1
30	147437	S.R. Lever (3) Shaft	1
31	★	Body	1
32	61925024	ME. Driving Lever S.S.	1
33	139666	ME. Lever Spring	1
34	139662	ME. Driving Lever Metal	1
35	065234	ME. Driving Lever Ass'y	1
36	139644	Sprocket Gear	1
37	139650	Sprocket Spring	1
38	139647	Sprocket Shaft	1
39	63912524	Counter Indicator S.S.	1
40	139893	Counter Indicator	1
41	139891	Counter Gear Stopper	1
42	139892	Counter Name Plate	1
43	139887	Counter Gear (1)	1
44	139890	Counter Spring	1
45	139895	Counter Lever Spring	1
46	63928024	Counter Base Plate S.S.	1
47	63912524	S.S.	1
48	61902024	W. Hangar Spring S.S.	2
49	139612	W. Hangar Spring	1
50	065830	Counter Base Plate Ass'y	1
51	065292	W Shaft (A) Ass'y	1
52	139888	Counter Gear (2)	1

NOTE : (Parts with marked "★" are not Available)

No. 4



NOTE : (Parts with marked "★" are not Available)

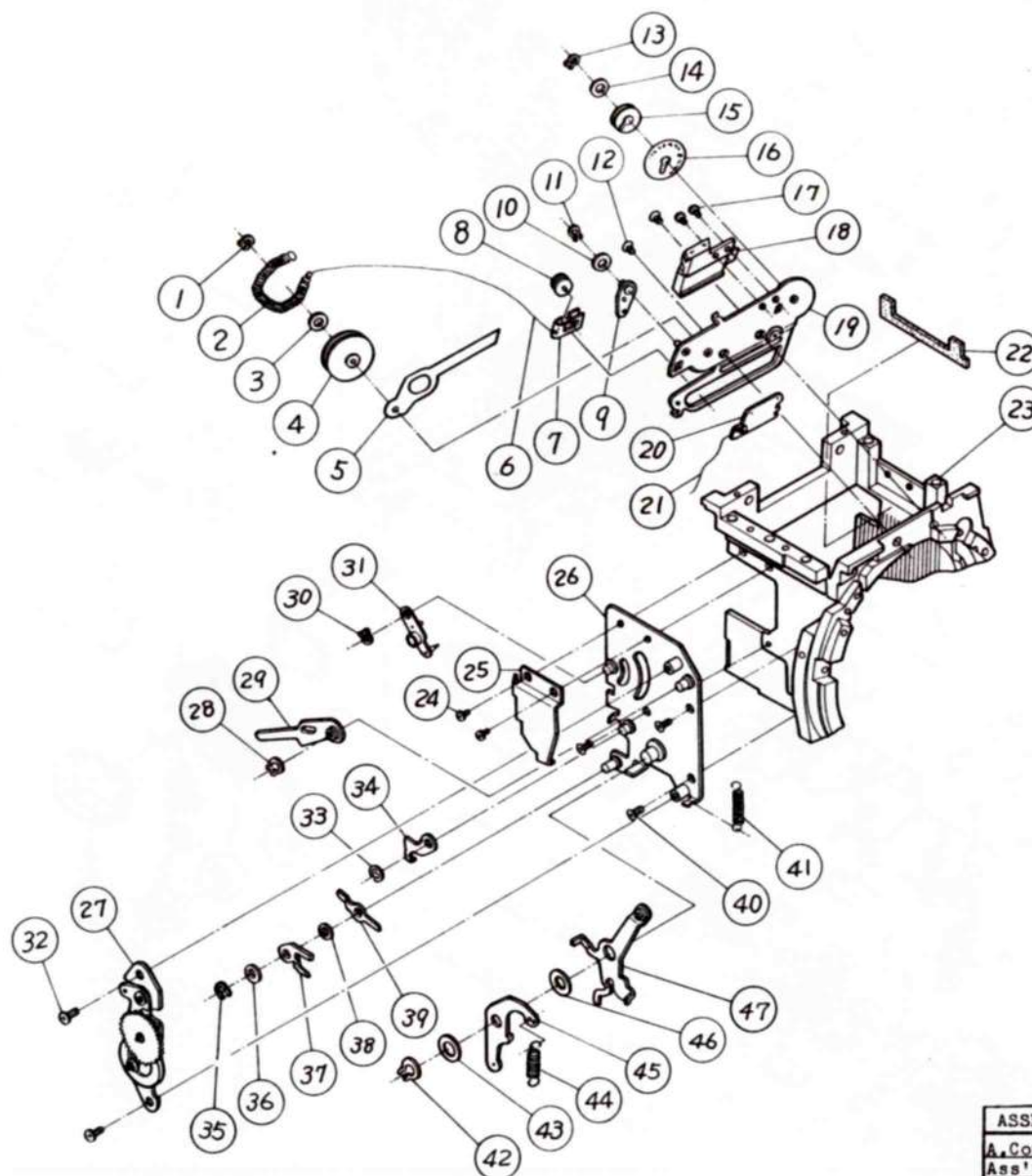


	PARTS NO	DESCRIPTION	QTY
1	139792	M. Light-Proof Plate	1
2	139799	M. Frame Light-Proof Sheet	1
3	139796	M. Pin (2)	1
4	139798	M. Spring	1
5	065253	ML-3 Ass'y	1
6	065741	M. Frame Ass'y	1
7	139791	Mirror	1
8	139878	Eye-piece Lens	1
9	139873	SPD Holder (3)	1
10	63904024	SPD Holder S.S.	2
11	142819	SPD Light-Gathering Lens	1
12	139376	Corrective Lock Sp. Post	1
13	139882	Eye-Piece Mask	1
14	139870	Penta Spacer	1
15	139866	Focusing Glass	1
16	61912524	Penta Prism Holder S.S.	4
17	139865	S. Prism	1
18	139864	Penta Prism Holder	1
19	139871	P. Adjusting Washer (t 0.5)	4
	139872	P. Adjusting Washer (t 0.2)	
	139873	P. Adjusting Washer (t 0.3)	
20	★	Mirror Box	1
21	139815	Lock Lever	1
22	139817	Lock Lever Spring	1
23	139816	Lock Lever Shaft	1
24	132143	Strap Holder S.S.	2
25	66001039	P. Stop Connecting Ring S.S.	4
26	139812	Mount Spring	3
27	61913024	Mount Spring S.S.	6
28	139813	Mount Stopper	1
29	61913024	Mount Stopper S.S.	2
30	139823	P. Stop Connecting Ring	1
31	142810	Body Mount	1
32	131177	Body Mount S.S.	4
33	61914522	S-LED Adjusting Plate (2) S.S.	1
34	139877	S-LED Adjusting Plate (2)	1
35	065503	Amp. Ass'y	1
36	63911524	F.P.C. S.S.	2
37	61912524	F.P.C. S.S.	3
38		Acetate Cloth Tape	1
39	139862	Penta Prism Fixer	1
40	139863	Penta Prism Fixer Sp.	2
41	139858	Penta Dust-Proof Moquette	1
42	139861	Penta Cover	1
43	139860	Penta Prism	1
44	139868	Finder Mask Frame	1
45	139869	S. Name Plate	1
46	128118	Body Cap	1

ASSEMBLY PARTS	ORDER NO	DESCRIPTION
M. Box Ass'y	065751	1 - 34 38 - 45
		(See No. 7, No. 8)
Penta Holder Ass'y	065815	14, 15, 17, 18, 38 - 40, 43-45

NOTE : (Parts with marked "★" are not Available)

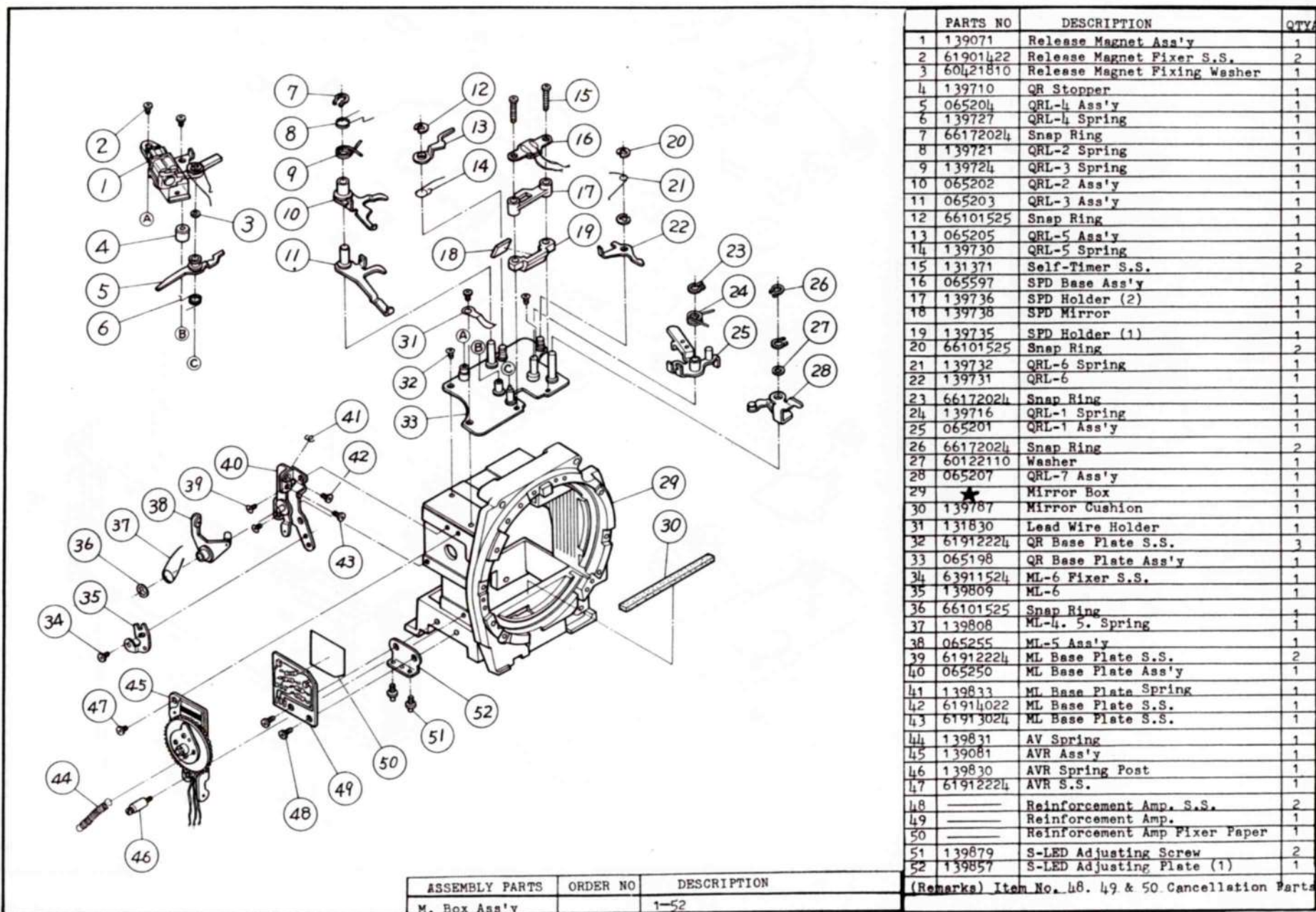
No. 6



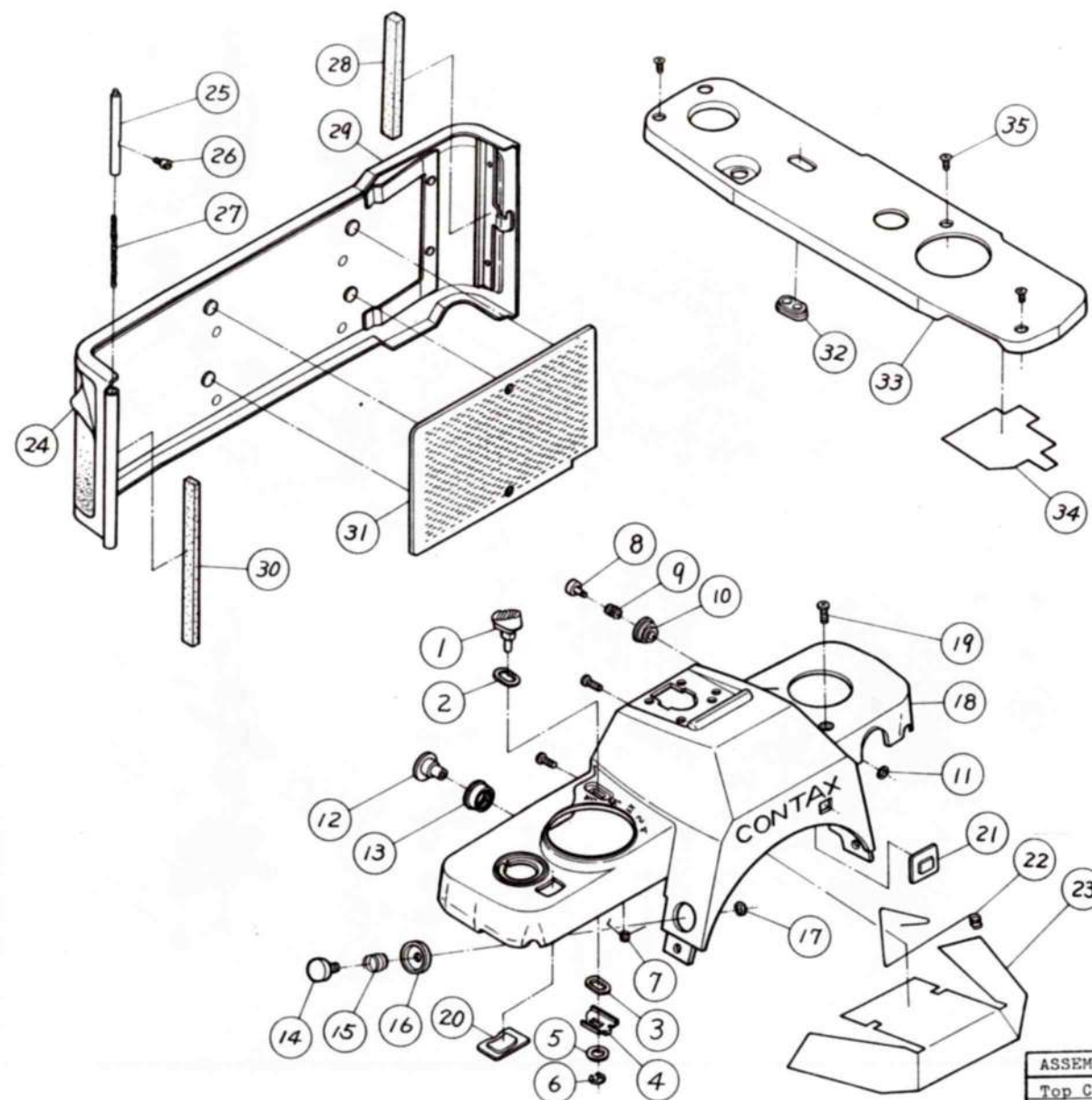
PARTS NO	DESCRIPTION	QTY
1 66171524	Snap Ring	1
2 139846	A Indicator Spring	1
3 60131510	Washer	1
4 139842	ASP Pulley	1
5 139849	Exposure Corrective Flag	1
6	Tetoron Lace (0.4 mm)	1
7 139841	A Hook	1
8 139839	A Pulley (2)	1
9 139850	Exposure Corrective Flag Lever	1
10 60131510	Washer	1
11 66171524	Snap Ring	1
12 61812524	A Indicator Base Plate S.S.	2
13 66171524	Snap Ring	1
14 60131510	Washer	1
15 139843	A Name Plate Pulley	1
16 139844	A Name Plate	1
17 61902024	A Prism Base S.S.	2
18 139083	A Prism Base Ass'y	1
19 065356	A Indicator Base Plate Ass'y	1
20 139845	A Exposure Corrective Plate	1
21	Tetoron Lace (0.4mm)	1
22 139859	M Moquette	1
23 ★	Mirror Box	1
24 61901424	MC Light-Proof Plate S.S.	2
25 139773	MC Light-Proof Plate	1
26 065196	MC Base Plate Ass'y	1
27 139073	GG Base Plate Ass'y	1
28 66172024	Snap Ring	1
29 065213	MCL-3 Ass'y	1
30 66172024	Snap Ring	1
31 065214	MCL-4 Ass'y	1
32 63902024	GG Base Plate S.S.	2
33 66101525	Snap Ring	1
34 139770	MCL-5	1
35 60172024	Snap Ring	1
36 60122110	MC Shaft-3 Washer	1
37 139772	MCL-7	1
38 60142110	MC Shaft-3 Washer	1
39 139771	MCL-6	1
40 61812524	MC Base Plate S.S.	3
41 139761	MC Restore Spring	1
42 66173024	Snap Ring	1
43 60223122	MCL-1 Washer	1
44 139760	MC Driving Spring	1
45 065297	MCL-1 Ass'y	1
46 60223122	MCL-2 Washer	1
47 065212	MCL-2 Ass'y	1

ASSEMBLY PARTS	ORDER NO	DESCRIPTION
A. Corrective Plate Ass'y	065423	20-21
M. Box Ass'y	065751	1 - 47
(See page No. 6, NO. 8)		

NOTE : (Parts with marked "★" are not Available)



NOTE : (Parts with marked "★" are not Available)



	PARTS NO	DESCRIPTION	QTY
1	139166	ME Button	1
2	139187	ME Button Slider	1
3	139187	ME Button Slider	1
4	139188	ME Button Guide	1
5	60133110	ME Washer	1
6	66101525	Snap Ring	1
7	139189	ME Button Spring	1
8	139161	S. Lock Button	1
9	139192	S. Lock Button Sp.	1
10	139191	S. Lock Button Holder	1
11	66101225	Snap Ring	1
12	139165	Release Cap	1
13	139164	R. Socket Decorating Ring	1
14	131817	Lens Lock Button	1
15	131818	Lens Lock Button Spring	1
16	139199	Lens Button Ring	1
17	66101225	Snap Ring	1
18	★	Top Cover	1
19	61912529	Top Cover S.S.	3
20	139162	Counter Window	1
21	139163	ASA Window	1
22	139361	B. Earth Contact	1
23	132142	Top Cover Insulation Sheet	1
24	139124	Back Cover Leather	1
25	131130	Hinge Shaft (1)	1
26	139132	Hinge Shaft Stopper	1
27	131133	Hinge Shaft Spring	1
28	139129	Back Cover Light-Proof Moquette	1
29	065286	Back Cover Ass'y	1
30	132131	Body Hinge Moquette	1
31	139139	Pressure Plate	1
32	139194	Connector Frame	1
33	139193	Bottom Cover	1
34	139195	Bottom Cover Insulation Seat	1
35	131391	Top Cover S.S.	2

ASSEMBLY PARTS	ORDER NO	DESCRIPTION
Top Cover Ass'y	065161	1 - 18 20 - 23
		(See page No. 1)

NOTE : (Parts with marked "★" are not Available)